

180 °C

The heat shield

Series specifically developed for industrial applications where the ambient temperatures are particularly harsh (from -40°C to +180°C). Available in the sizes "21.21", "44.27", "57.27", "77.27", "104.27" and "104.62", to be used in combination with the available connector inserts suitable for high temperatures up to **180 °C** made by self-extinguishing thermoplastic material (>PPS< polyphenylene sulphide). All these enclosures except those sized "21.21" have supplementary insulating strips inside.

This enclosure series is distinguished by the red colour.

✓ **UL** certified for USA and Canada for **Type 12** (indoor use), **Type 4** and **Type 4X** (outdoor use) (equivalent to NEMA 12, 4, and 4X) protection ratings, marked on the packaging label. **IP44** (size "21.21"), **IP65** (other sizes) degree of protection according to **EN IEC 60529**.



SUM-UP OF MATERIALS USED

- ☑ Enclosure body made of die cast aluminium alloy
- ☑ Chromate conversion coating, RoHS 2 conform, on the enclosure body die casts
- ☑ Coated with special high temperatures resistant, red coloured thermosetting powder
- ☑ Flange and interface sealing gaskets (as applicable) in FKM, anti-aging heat resistant fluoroelastomer
- ☑ Locking device with lever(s), springs and pegs in stainless steel
- ☑ Single-block locking lever handles in stainless steel (for "21.21" sized CKA...R/ MKA...R, "44.16" sized CZ...R and MZ...R, and "104.62" sized CH...R 48 ... and, MH...R 48 ... versions)
- ☑ Locking lever handles in die-cast aluminium alloy with the same special coating as the enclosure body (for CH...R 10, 16, 24 and MH...R 10, 16, 24 versions)



Watch our
180 °C enclosure
series video

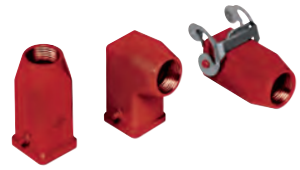
CKA and MKA 180 °C version

inserts		page:
CK RY	3 poles + ⊕	60
CK RY	4 poles + ⊕	60

bulkhead mounting housings straight and angled



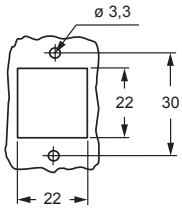
hoods



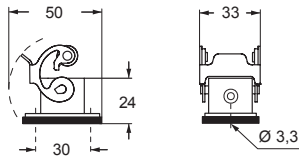
description	part No. (entry Pg 11)	part No. (entry M20)	part No. (entry Pg 11)	part No. (entry M20)
with stainless steel lever and gasket ¹⁾	CKAXR 03 I			
without cable entry, with stainless steel lever and gasket ¹⁾	CKAXR 03 IA			
with cable entry, with stainless steel lever and gasket ¹⁾	CKAXR 03 IAP	MKAXR IAP20		
with cable entry, with stainless steel lever and gasket bulkhead hole closed ¹⁾	CKAXR 03 AP	MKAXR AP20		
with pegs, top entry ¹⁾			CKAR 03 V	MKAR V20
with pegs, side entry ¹⁾			CKAR 03 VA	MKAR VA20
with stainless steel lever, top entry ¹⁾			CKAXR 03 VG	MKAXR VG20

¹⁾ Enclosures with IP44 protection rating

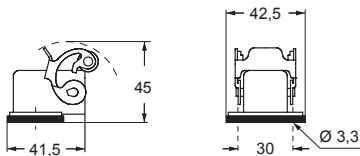
panel cut-out for bulkhead mounting housings



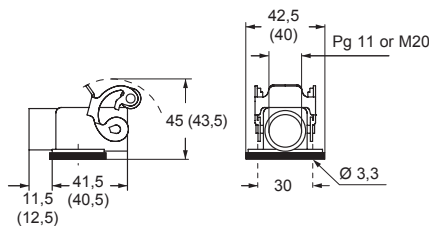
CKAXR I



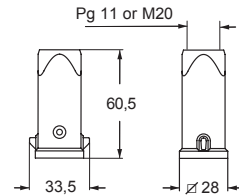
CKAXR IA



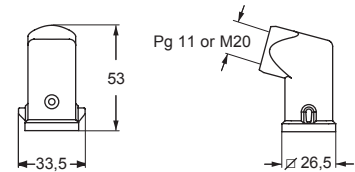
CKAXR IAP (CKAXR AP) and MKAXR IAP (MKAXR AP)



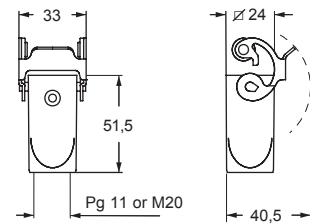
CKAR V and MKAR V



CKAR VA and MKAR VA



CKAXR VG and MKAXR



CAUS® Type 12



MKAX 180 °C version

inserts		page:
CK RY	3 poles + ⊕	60
CK RY	4 poles + ⊕	60

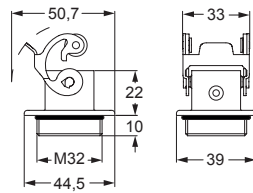
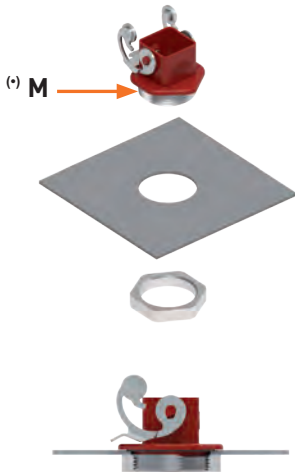
bulkhead mounting housings with stainless steel lever



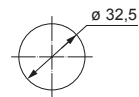
description	part No. (entry - M32)
-------------	---------------------------

M32 fixing thread ^(*) **MKAXR IF**

^(*) Locknut supplied on request, see Cable glands catalogue (article AS M32N metallic)



panel cut-out for enclosures



CAUS Type 12



180 °C

MKAXX 180 °C version

inserts		page:
CK RY	3 poles + ⊕	60
CK RY	4 poles + ⊕	60

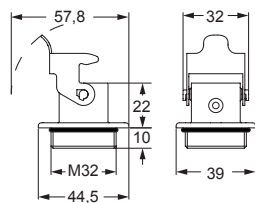
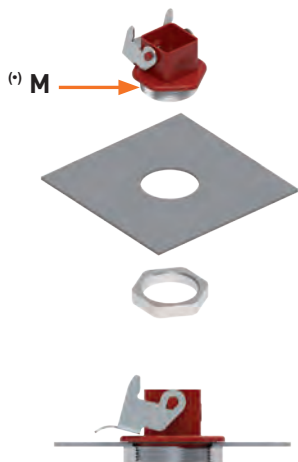
bulkhead mounting housings with stainless steel rigid lever



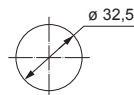
description	part No. (entry - M32)
-------------	---------------------------

M32 fixing thread ^(*) **MKAXXR IF**

^(*) Locknut supplied on request, see Cable glands catalogue (article AS M32N metallic)



panel cut-out for enclosures



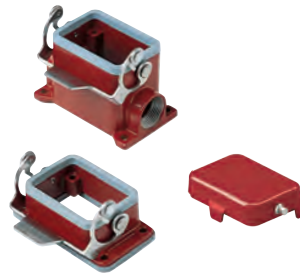
CAI[®]US Type 12



180 °C

inserts
CNE RY 6 poles + ⊕ page: 116

bulkhead and surface mounting housings and cover



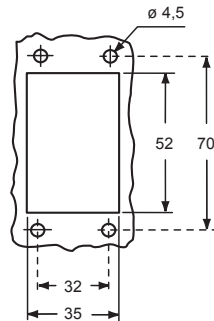
hoods and cover



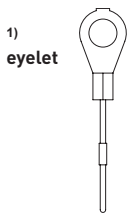
description	part No.	entry Pg	part No	entry M	part No.	entry Pg	part No.	entry M
bulkhead mounting housing with lever and gasket	CZIR 06 L	--						
surface mounting housing, with lever	CZPR 06 L	16	MZPR 06 L20	20				
surface mounting housing, with lever, high construction	CZAPR 06 L	21	MZAPR 06 L32	32				
cover with pegs (for enclosures) ¹⁾	CHCR 06 L							
cover with pegs (for enclosures) ²⁾	CHCR 06 SL							
enclosure with pegs, side entry					CHOR 06 L13	13,5	MHOR 06 L20	20
enclosure with pegs, side entry, high construction					CAOR 06 L21	21	MAOR 06 L32	32
enclosure with pegs, top entry					CHVR 06 L13	13,5		
enclosure with pegs, top entry ³⁾							MHVR 06 L20	20
enclosure with pegs, top entry, high construction					CAVR 06 L21	21	MAVR 06 L32	32
cover with lever (for hoods) ²⁾					CZCR 06 LG			

³⁾ can only be used with a complete cable gland (to be purchased separately)

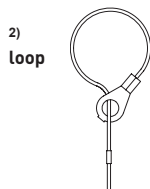
panel cut-out for bulkhead mounting housings



For fixing on housings



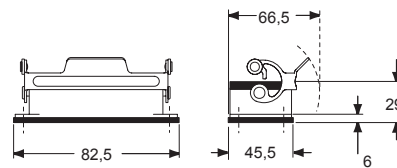
For fixing on hoods



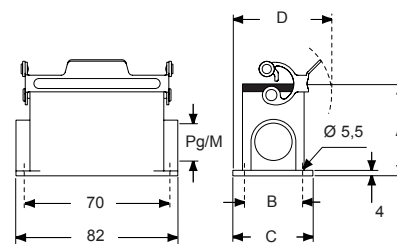
CAU[®] US Type 4/4X/12



CZIR L



CZPR L - CZAPR L and MZPR L - MZAPR L

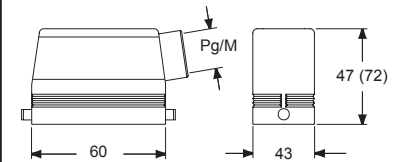


type	A	B	C	D
CZPR L / MZPR L	53	40	52	69,5
CZAPR L / MZAPR L	74	45	57	72

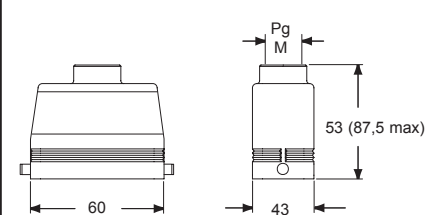
CHCR L - CHCR SL



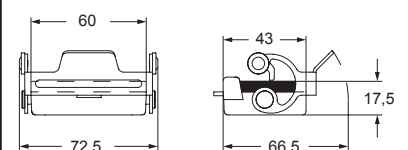
CHOR L (CAOR L) and MHOR L (MAOR L)



CHVR L (CAVR L) and MHVR L (MAVR L)



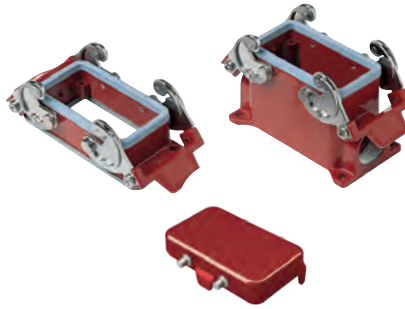
CZCR LG



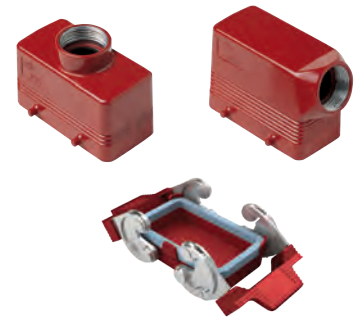
CH - CA and MH - MA 180 °C version

inserts
CNE RY 10 poles + ⊕ page: 117

bulkhead and surface mounting housings and cover



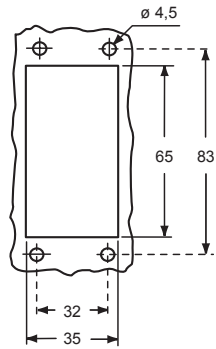
hoods and cover



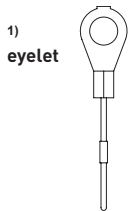
description	part No.	entry Pg	part No.	entry M	part No.	entry Pg	part No.	entry M
bulkhead mounting housing with levers and gasket	CHIR 10	–						
surface mounting housing, with levers	CHPR 10	16	MHPR 10.20	20				
surface mounting housing, with levers, high construction	CAPR 10.21	21	MAPR 10.32	32				
cover with 4 pegs (for enclosures) ¹⁾	CHCR 10							
cover with 4 pegs (for enclosures) ²⁾	CHCR 10 S							
enclosure with pegs, side entry					CHOR 10	16	MHOR 10.20	20
enclosure with pegs, side entry, high construction					CAOR 10.21	21	MAOR 10.32	32
enclosure with pegs, top entry					CHVR 10	16		
enclosure with pegs, top entry ³⁾							MHVR 10.20	20
enclosure with pegs, top entry, high construction					CAVR 10.21	21	MAVR 10.32	32
cover with 2 levers (for hoods) ²⁾					CHCR 10 G			

³⁾ can only be used with a complete cable gland (to be purchased separately)

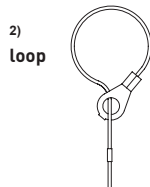
panel cut-out for bulkhead mounting housings



For fixing on housings



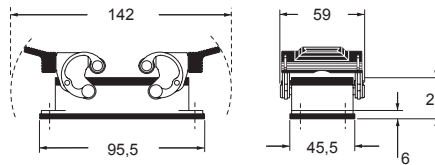
For fixing on hoods



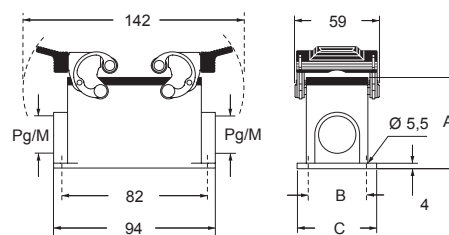
CAIUS Type 4/4X/12



CHIR



CHPR - CAPR and MHPR - MAPR

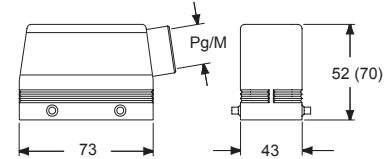


type	A	B	C
CHPR / MHPR	57	40	52
CAPR / MAPR	74	45	57

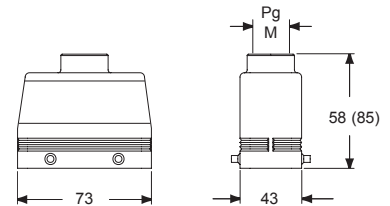
CHCR - CHCR S



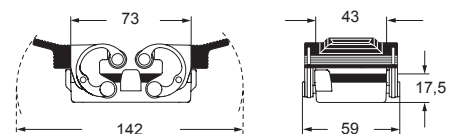
CHOR (CAOR) and MHOR (MAOR)



CHVR (CAVR) and MHVR³⁾ (MAVR)



CHCR G



CH - CA and MH - MA 180 °C version

inserts		page:
CNE RY	16 poles + ⊕	118
CP RY	6 poles + ⊕	178
CX RY	4/0 and 4/2 poles + ⊕	202 - 203

bulkhead and surface mounting housings and cover

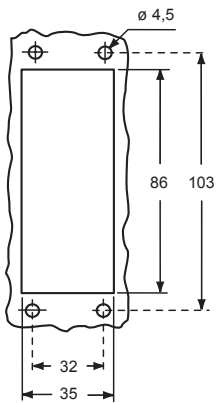


hoods and cover

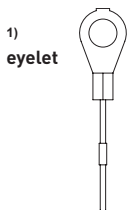


description	part No.		part No.		part No.		part No.	
	entry Pg	entry M	entry Pg	entry M	entry Pg	entry M	entry Pg	entry M
bulkhead mounting housing with levers and gasket			CHIR 16	--				
surface mounting housing, with levers, high construction			CAPR 16.21	21	MAPR 16.32	32		
cover with 4 pegs (for enclosures) ¹⁾			CHCR 16					
cover with 4 pegs (for enclosures) ²⁾			CHCR 16 S					
enclosure with pegs, side entry					CHOR 16	21	MHOR 16.25	25
enclosure with pegs, side entry, high construction					CAOR 16.21	21	MAOR 16.40	40
enclosure with pegs, top entry					CHVR 16	21	MHVR 16.25	25
enclosure with pegs, top entry, high construction					CAVR 16.21	21	MAVR 16.40	40
cover with 2 levers (for hoods) ²⁾					CHCR 16 G			

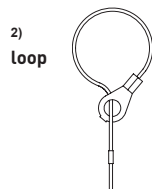
panel cut-out for bulkhead mounting housings



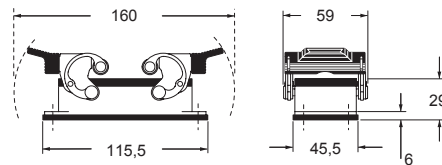
For fixing on housings



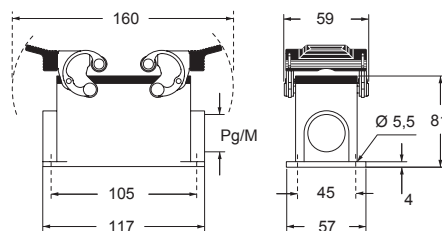
For fixing on hoods



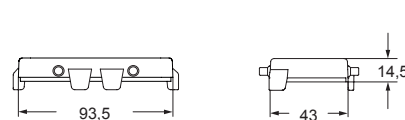
CHIR



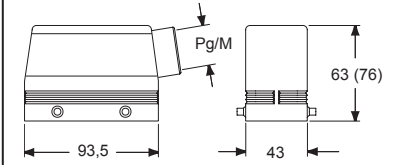
CAPR and MAPR



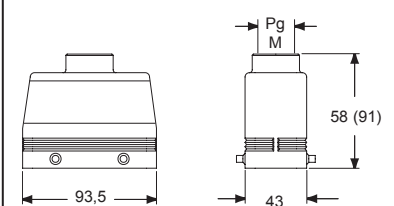
CHCR - CHCR S



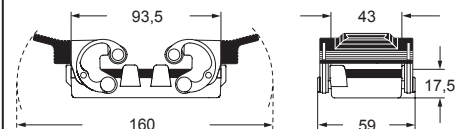
CHOR (CAOR) and MHOR (MAOR)



CHVR (CAVR) and MHVR (MAVR)



CHCR G



CAIUS® Type 4/4X/12



180 °C

CH - CA and MH - MA 180 °C version

inserts		page:
CNE RY	24 poles + ⊕	119
CX RY	4/8 poles + ⊕	204

bulkhead and surface mounting housings and cover

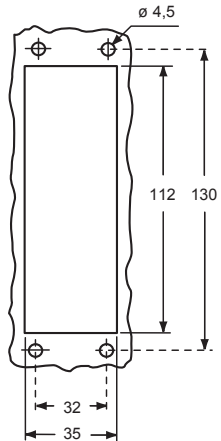


hoods and cover

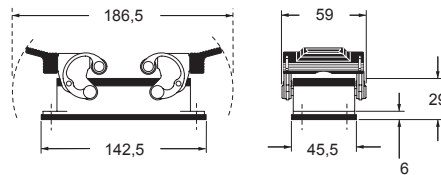


description	part No.	entry Pg	part No.	entry M	part No.	entry Pg	part No.	entry M
bulkhead mounting housing with levers and gasket	CHIR 24	--						
surface mounting housing, with levers, high construction	CAPR 24.21	21	MAPR 24.32	32				
cover with 4 pegs (for enclosures) ¹⁾	CHCR 24							
cover with 4 pegs (for enclosures) ²⁾	CHCR 24 S							
enclosure with pegs, side entry					CHOR 24	21	MHOR 24.25	25
enclosure with pegs, side entry, high construction					CAOR 24.29	29	MAOR 24.40	40
enclosure with pegs, top entry					CHVR 24	21	MHVR 24.25	25
enclosure with pegs, top entry, high construction					CAVR 24.29	29	MAVR 24.40	40
cover with 2 levers (for hoods) ²⁾					CHCR 24 G			

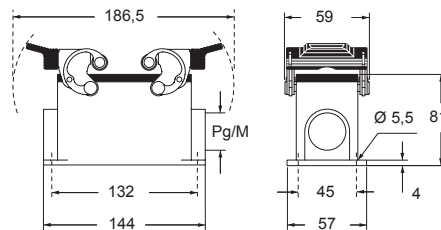
panel cut-out for bulkhead mounting housings



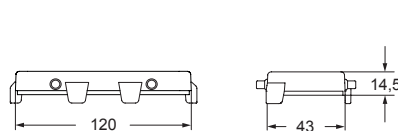
CHIR



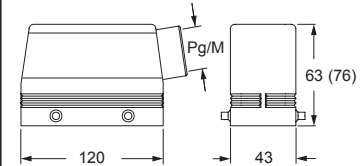
CAPR and MAPR



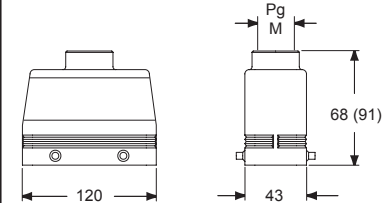
CHCR - CHCR S



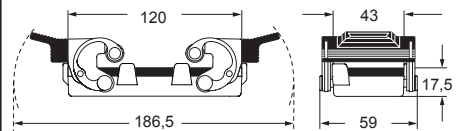
CHOR (CAOR) and MHOR (MAOR)



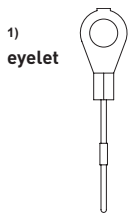
CHVR (CAVR) and MHVR (MAVR)



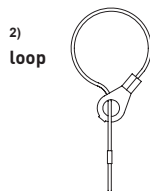
CHCR G



For fixing on housings



For fixing on hoods



CAUS® Type 4/4X/12

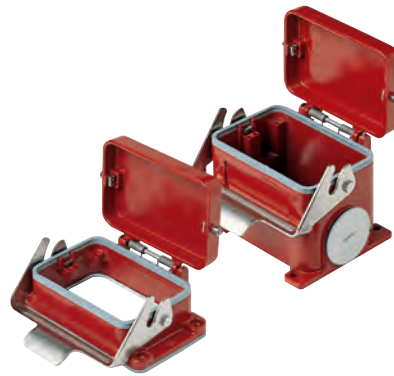


CH and MH 180 °C version

inserts page:
CNE RY 48 poles + ⊕ 120

insert dimensions:
2 x (104 x 27) mm

bulkhead and surface mounting housings

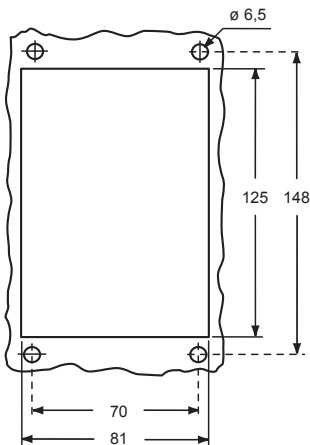


hoods

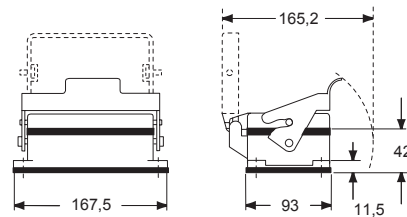


description	part No.		entry		part No.		entry	
			Pg	M			Pg	M
bulkhead mounting housings, with lever and cover	CHIR 48 LS	--						
surface mounting housings, with lever and cover	CHPR 48 LS	MHPR 48 LS40	36 x 1/2	40 x 1/2				
side entry, with pegs					CHOR 48 L	MHOR 48 L40	36	40
top entry, with pegs					CHVR 48 L	MHVR 48 L40	36	40

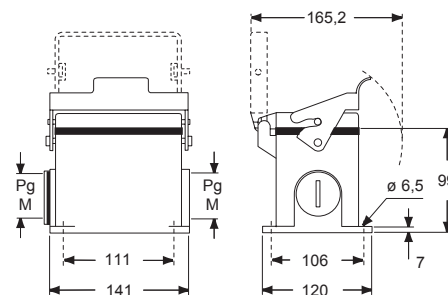
panel cut-out for bulkhead mounting housings



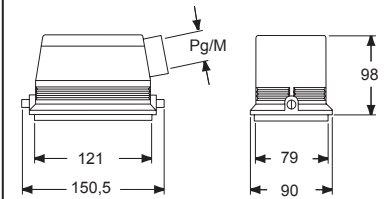
CHIR LS



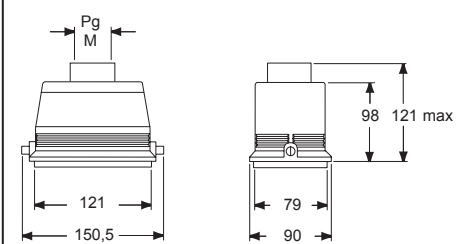
CHPR LS and MHPR LS



CHOR L and MHOR L



CHVR L and MHVR L



CAUS® Type 4/4X/12

