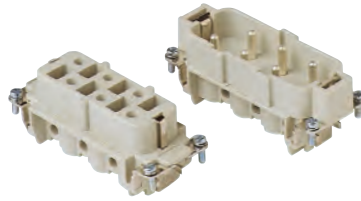


# CP - CP...RY 6 poles + ⊕ 35A - 400/690V

|  |                           |
|--|---------------------------|
| enclosures:<br>size "77.27"            | page:                     |
| <b>CP 06:</b>                          |                           |
| C-TYPE IP65 or IP66/IP69               | 402 - 411                 |
| C7 IP67, two levers                    | 439 - 440                 |
| V-TYPE IP65 or IP66/IP69, single lever | 454 - 458                 |
| BIG hoods                              | 470 - 471                 |
| T-TYPE IP65 insulating                 | 484 - 485                 |
| T-TYPE / W IP66/IP69 insulating        | 491                       |
| HYGIENIC T-TYPE / H IP66/IP69          | 503                       |
| HYGIENIC T-TYPE / C IP66/IP69, -50 °C  | 508                       |
| W-TYPE for aggressive environments     | 523                       |
| E-Xtreme® corrosion proof              | 534 - 535, 544, 554 - 555 |
| EMC                                    | 580                       |
| Central lever                          | 609 - 611                 |
| LS-TYPE                                | 622 - 623                 |
| IP68                                   | 640 - 643                 |
| <b>panel supports:</b>                 | page:                     |
| COB                                    | 652 - 653                 |
| <b>CP 06 RY:</b>                       |                           |
| For 180 °C                             | 588                       |

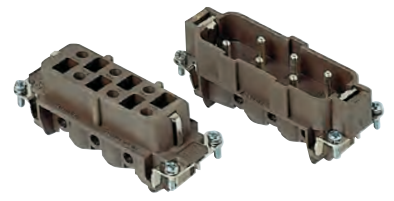
inserts, screw terminal connection



Q SILVER PLATED CONTACTS

part No.

inserts, screw terminal connection



180 °C

Q SILVER PLATED CONTACTS

part No.

description

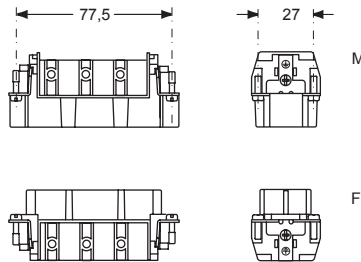
indirect, with plate  
female inserts with female contacts  
male inserts with male contacts

CPF 06  
CPM 06

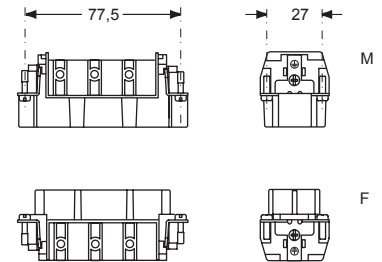
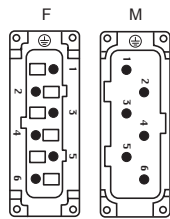
indirect, with plate, use in temperatures up to 180 °C  
female inserts with female contacts, brown  
male inserts with male contacts, brown

CPF 06 RY  
CPM 06 RY

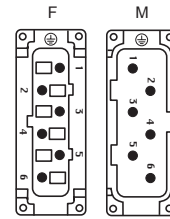
- characteristics according to EN 61984:
- 35A 400/690V 6kV 3**
- certified
- rated voltage according to UL/CSA: 600V
- insulation resistance: ≥ 10 GΩ
- ambient temperature limit: -40 °C ... +125 °C (CP RY version up to 180 °C)
- made of self-extinguishing thermoplastic resin UL 94V-0
- mechanical life: ≥ 500 cycles
- contact resistance: ≤ 0,5 mΩ
- for max. current load see the connector inserts derating diagrams below; for more information see page 28



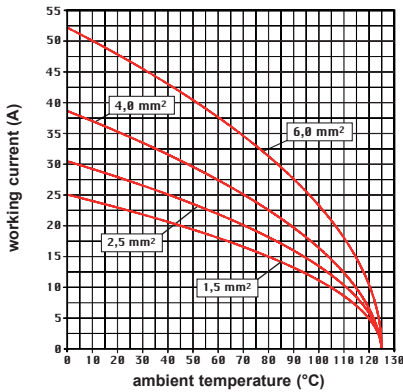
contacts side (front view)



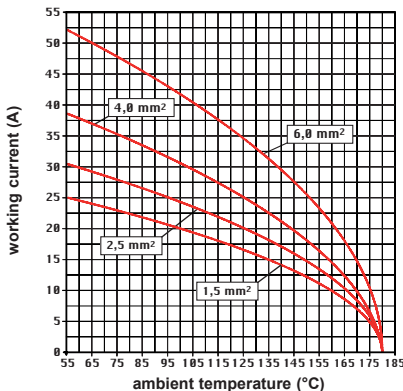
contacts side (front view)



CP 06 poles connector inserts  
Maximum current load derating diagram



CP...RY 06 poles connector inserts  
Maximum current load derating diagram



- inserts with plate, for section conductors: 0,75 - 6 mm² - AWG 18 - 10
- conductors stripping length: 10,5 mm
- terminal screw torque: 1,2 Nm (10,7 lb.in), information see page 20 and 21

- inserts with plate, for section conductors: 0,75 - 6 mm² - AWG 18 - 10
- conductors stripping length: 10,5 mm
- terminal screw torque: 1,2 Nm (10,7 lb.in), information see page 20 and 21

CP - CP...RY

# CP 12 poles + ⊕ 35A - 400/690V

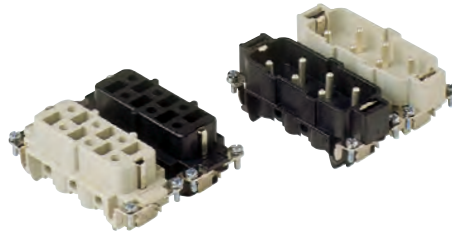
enclosures:  
size "77.62"

page:

C-TYPE IP65 or IP66/IP69  
W-TYPE for aggressive environments  
E-Xtreme® corrosion proof

424 - 429  
525  
546

## inserts, screw terminal connection



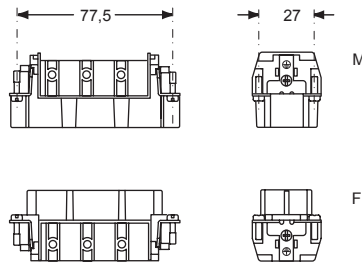
### Q SILVER PLATED CONTACTS

| description  | part No.                       | part No.                           |
|--|--------------------------------|------------------------------------|
| indirect, with plate<br>female inserts No. (1-6), white and black<br>male inserts No. (1-6), white and black | <b>CPF 06</b><br><b>CPM 06</b> | <b>CPF 06 N</b><br><b>CPM 06 N</b> |

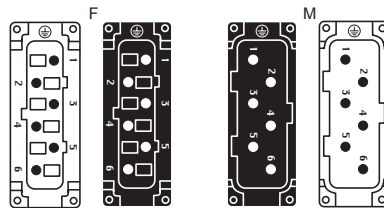
- characteristics according to EN 61984:

**35A 400/690V 6kV 3**

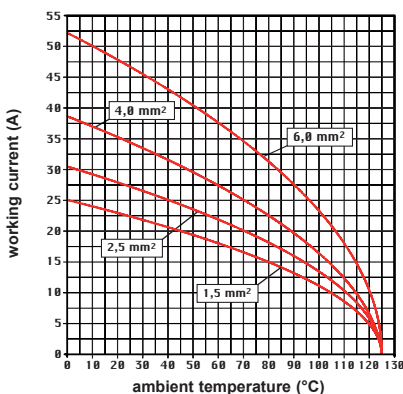
- certified
- rated voltage according to UL/CSA: 600V
- insulation resistance:  $\geq 10 \text{ G}\Omega$
- ambient temperature limit:  $-40 \text{ }^\circ\text{C} \dots +125 \text{ }^\circ\text{C}$   
(CP RY version up to  $180 \text{ }^\circ\text{C}$ )
- made of self-extinguishing thermoplastic resin UL 94V-0
- mechanical life:  $\geq 500$  cycles
- contact resistance:  $\leq 0,5 \text{ m}\Omega$
- for max. current load see the connector inserts derating diagrams below; for more information see page 28



contacts side (front view)



**CP 12 poles connector inserts**  
**Maximum current load derating diagram**



- inserts with plate, for section conductors: 0,75 - 6 mm<sup>2</sup> - AWG 18 - 10
- conductors stripping length: 10,5 mm
- terminal screw torque: 1,2 Nm (10,7 lb.in), information see page 20 and 21