

CH C-TYPE standard version

inserts		page:
CD	80 poles + ⊕	73
CDD	144 poles + ⊕	82
CDS	54 poles + ⊕	-
CDSH	54 poles + ⊕	90
CNE	32 poles + ⊕	114
CSE	32 poles + ⊕	-
CSH	32 poles + ⊕	114
CSH S	32 poles + ⊕	126
CCE	32 poles + ⊕	134
CSS	32 poles + ⊕	152
CTSE (16A) *)	32 poles + ⊕	164
CQE	64 poles + ⊕	172
CME	12+4 (aux) poles + ⊕	142
CMSH	12+4 (aux) poles + ⊕	142
CMCE	12+4 (aux) poles + ⊕	143
CP	12 poles + ⊕	179
MIXO	4 + 4 modules	262 - 317

*) can be used only in bulkhead mounting housings

insert dimensions:
2 x (77,5 x 27) mm

bulkhead mounting housings with 2 levers or 4 pegs



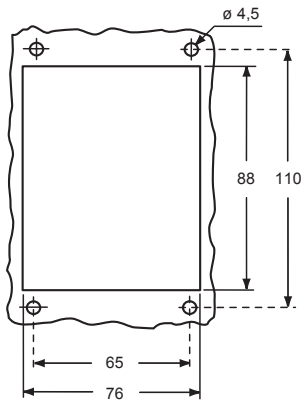
bulkhead mounting housings with single lever



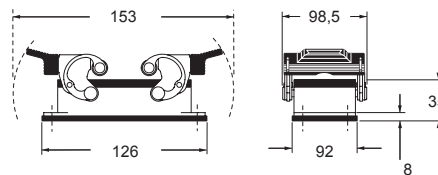
description	part No.	part No.
with one or two levers	CHI 32	CHI 32 L
with pegs and aluminium cover 1)	CHI 32 CS	
with lever and aluminium cover		CHI 32 LS

1) may be combined with enclosures:
- CHO/CHV/CFO/CFV 32 X
- MHO/MHV/MFO/MFV 32 X

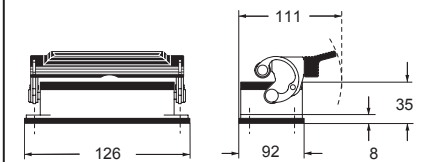
panel cut-out for bulkhead mounting housings



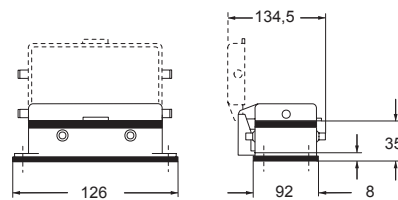
CHI ▲



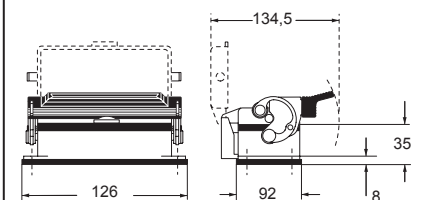
CHI L ▲



CHI CS ●



CHI LS ●



IMPORTANT NOTE: The enclosures ensure IP66/IP69 degree of protection (or IP65 for hinged cover versions) when mated and locked with the closing levers. The cover (CS, CP) only ensures mechanical protection, but does not ensure IP65 degree of protection.

CAUS Type 4/4X/12



C-TYPE

CH and MH C-TYPE standard version

inserts		page:
CD	80 poles + ⊕	73
CDD	144 poles + ⊕	82
CDS	54 poles + ⊕	-
CDSH	54 poles + ⊕	90
CNE	32 poles + ⊕	114
CSE	32 poles + ⊕	-
CSH	32 poles + ⊕	114
CSH S	32 poles + ⊕	126
CCE	32 poles + ⊕	134
CSS	32 poles + ⊕	152
CQE	64 poles + ⊕	172
CME	12+4 (aux) poles + ⊕	142
CMSH	12+4 (aux) poles + ⊕	142
CMCE	12+4 (aux) poles + ⊕	143
CP	12 poles + ⊕	179
MIXO	4 + 4 modules	262 - 317

insert dimensions:
2 x (77,5 x 27) mm

surface mounting housings with 2 levers



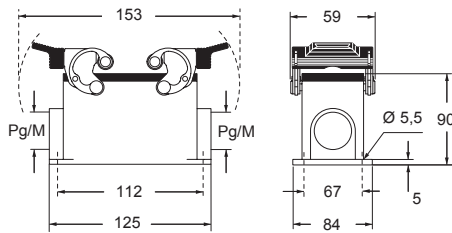
surface mounting housings with single lever



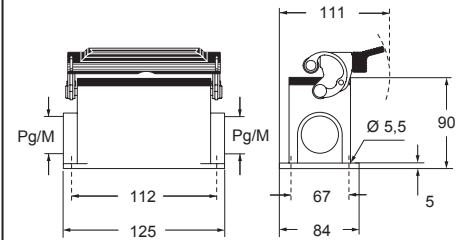
description	part No.	entry Pg	part No.	entry M	part No.	entry Pg	part No.	entry M
with one or two levers	CHP 32.29	29	MHP 32.40	40	CHP 32 L29	29	MHP 32 L40	40
with one or two levers	CHP 32.229	29 x 2	MHP 32.240	40 x 2	CHP 32 L229	29 x 2	MHP 32 L240	40 x 2
with one or two levers	CHP 32	36	MHP 32.50	50	CHP 32 L	36	MHP 32 L50	50
with one or two levers	CHP 32.2	36 x 2	MHP 32.250	50 x 2	CHP 32 L2	36 x 2	MHP 32 L250	50 x 2
with one or two levers	CHP 32.42	42			CHP 32 L42	42		
with one or two levers	CHP 32.242	42 x 2			CHP 32 L242	42 x 2		
with lever and aluminium cover					CHP 32 LS29	29	MHP 32 LS40	40
with lever and aluminium cover					CHP 32 LS229	29 x 2	MHP 32 LS240	40 x 2
with lever and aluminium cover					CHP 32 LS	36	MHP 32 LS50	50
with lever and aluminium cover					CHP 32 LS2	36 x 2	MHP 32 LS250	50 x 2
with lever and aluminium cover					CHP 32 LS42	42		
with lever and aluminium cover					CHP 32 LS242	42 x 2		

Q IMPORTANT NOTE: The enclosures ensure IP66/IP69 degree of protection (or IP65 for hinged cover versions) when mated and locked with the closing levers. The cover (CS, CP) only ensures mechanical protection, but does not ensure IP65 degree of protection.

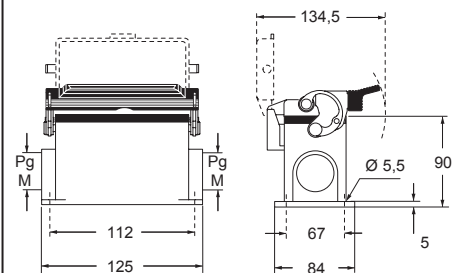
CHP and MHP ▲



CHP L and MHP L ▲



CHP LS and MHP LS ●



CAIUS Type 4/4X/12

- insulating cable gland or fittings without gasket
- cable gland with O-Ring gasket

CH - CF and MH - MF C-TYPE standard version

inserts		page:
CD	80 poles + ⊕	73
CDD	144 poles + ⊕	82
CDS	54 poles + ⊕	-
CDSH	54 poles + ⊕	90
CNE	32 poles + ⊕	114
CSE	32 poles + ⊕	-
CSH	32 poles + ⊕	114
CSH S	32 poles + ⊕	126
CCE	32 poles + ⊕	134
CSS	32 poles + ⊕	152
CQE	64 poles + ⊕	172
CME	12+4 (aux) poles + ⊕	142
CMSH	12+4 (aux) poles + ⊕	142
CMCE	12+4 (aux) poles + ⊕	143
CP	12 poles + ⊕	179
MIXO	4 + 4 modules	262 - 317

insert dimensions:
2 x (77,5 x 27) mm

hoods with 4 pegs and 2 levers



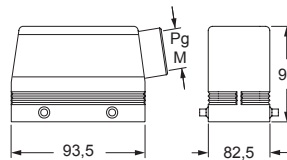
hoods with 2 pegs and 1 lever



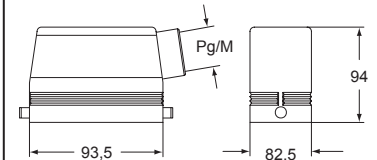
description	part No.	entry Pg	part No.	entry M	part No.	entry Pg	part No.	entry M
with pegs, side entry	CHO 32.29	29	MHO 32.32	32	CHO 32 L	36	MHO 32 L40	40
with pegs, side entry	CHO 32	36	MHO 32.40	40				
with pegs, side entry	CHO 32.42	42	MHO 32.50	50				
with pegs, side entry, without adapter 1)	CFO 32.29	29	MFO 32.32	32				
with pegs, side entry, without adapter 1)	CFO 32	36	MFO 32.40	40	CFO 32 L	36	MFO 32 L40	40
with pegs, side entry, without adapter 1)	CFO 32.42	42	MFO 32.50	50				
with pegs, top entry	CHV 32.29	29	MHV 32.32	32				
with pegs, top entry	CHV 32	36	MHV 32.40	40	CHV 32 L	36	MHV 32 L40	40
with pegs, top entry	CHV 32.42	42	MHV 32.50	50				
with pegs, top entry, without adapter 1)	CFV 32.29	29	MFV 32.32	32				
with pegs, top entry, without adapter 1)	CFV 32	36	MFV 32.40	40	CFV 32 L	36	MFV 32 L40	40
with pegs, top entry, without adapter 1)	CFV 32.42	42	MFV 32.50	50				
with levers and gasket, top entry	CHV 32 G29	29	MHV 32 G32	32				
with one or two levers and gasket, top entry	CHV 32 G	36	MHV 32 G40	40	CHV 32 LG	36	MHV 32 LG40	40
with levers and gasket, top entry	CHV 32 G42	42	MHV 32 G50	50				
with levers and gasket, top entry, without adapter 1)	CFV 32 G29	29	MFV 32 G32	32				
with lever/s and gasket, top entry, without adapter 1)	CFV 32 G	36	MFV 32 G40	40	CFV 32 LG	36	MFV 32 LG40	40
with levers and gasket, top entry, without adapter 1)	CFV 32 G42	42	MFV 32 G50	50				

1) enclosure without adapter, threaded on the body, to be used only with a complete cable gland.

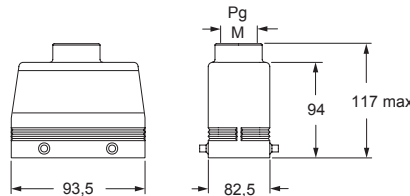
CHO/CFO and MHO/MFO



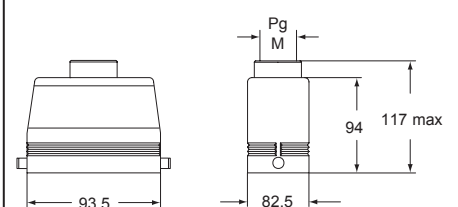
CHO/CFO L and MHO/MFO L



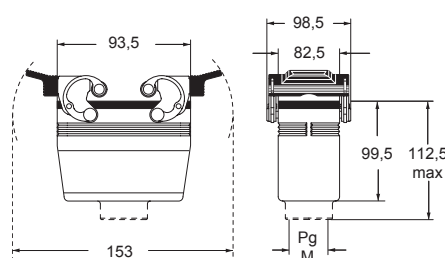
CHV/CFV and MHV/MFV



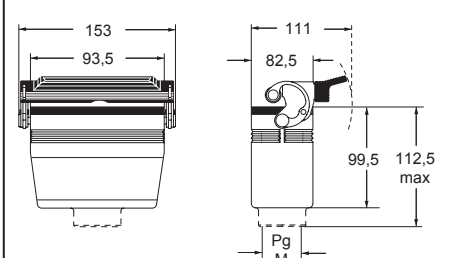
CHV/CFV L and MHV/MFV L



CHV/CFV G and MHV/MFV G



CHV/CFV LG and MHV/MFV LG



CAUS® Type 4/4X/12



insulating cable gland or fittings without gasket



cable gland with O-Ring gasket

CH - CF and MH - MF C-TYPE standard version

inserts		page:
CD	80 poles + ⊕	73
CDD	144 poles + ⊕	82
CDS	54 poles + ⊕	-
CDSH	54 poles + ⊕	90
CNE	32 poles + ⊕	114
CSE	32 poles + ⊕	-
CSH	32 poles + ⊕	114
CSH S	32 poles + ⊕	126
CCE	32 poles + ⊕	134
CSS	32 poles + ⊕	152
CQE	64 poles + ⊕	172
CME	12+4 (aux) poles + ⊕	142
CMSH	12+4 (aux) poles + ⊕	142
CMCE	12+4 (aux) poles + ⊕	143
CP	12 poles + ⊕	179
MIXO	4 + 4 modules	262 - 317

insert dimensions:
2 x (77,5 x 27) mm

hoods with 2 levers



covers



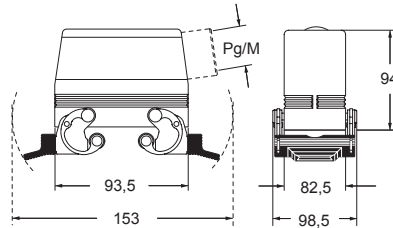
description	part No.	entry Pg	part No.	entry M	part No. (with eyelet)	part No. (with loop)
with levers, side entry ²⁾	CHO 32 X	36	MHO 32 X40	40		
with levers, side entry, without adaptor ^{1) 2)}	CFO 32 X	36	MFO 32 X40	40		
with levers, top entry ²⁾	CHV 32 X	36	MHV 32 X40	40		
with levers, top entry, without adaptor ^{1) 2)}	CFV 32 X	36	MFV 32 X40	40		
with 4 pegs (for enclosures with 2 levers with gasket)					CHC 32	CHC 32 S
with 4 pegs and gasket (for enclosures with 2 levers) ³⁾						CHC 32 C
with 2 pegs (for enclosures with 1 lever with gasket)					CHC 32 L	CHC 32 SL
with 2 levers (for hoods with 4 pegs)						CHC 32 G
with 1 lever (for hoods with 2 pegs)						CHC 32 LG

¹⁾ enclosure without adapter, threaded on the body, to be used only with a complete cable gland.

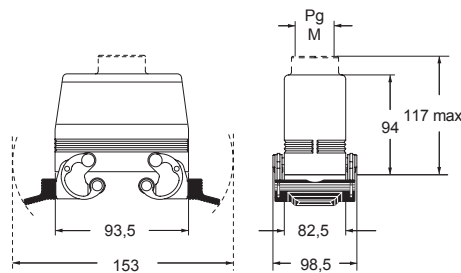
²⁾ may be combined with CHI 32 CS enclosures

³⁾ may be combined with enclosures:
- CHO/CFO 32 X and CHV/CFV 32 X
- MHO/MFO 32 X and MHV/MFV 32 X

CHO/CFO X and MHO/MFO X



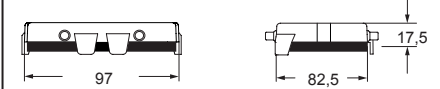
CHV/CFV X and MHV/MFV X



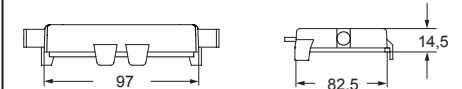
CHC (S)



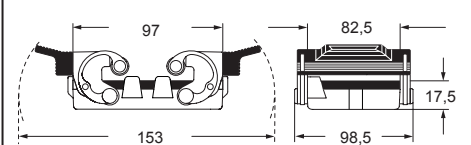
CHC C



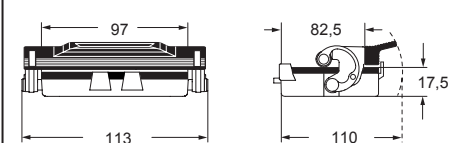
CHC L (SL)



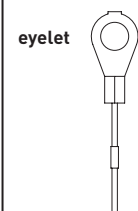
CHC G



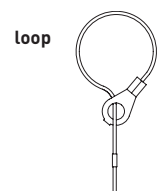
CHC LG



For fixing on housings



For fixing on hoods



CAU® Type 4/4X/12

IP65 insulating cable gland or fittings without gasket

IP66
IP69 cable gland with O-Ring gasket

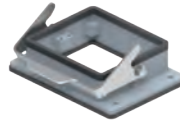
CHIX C-TYPE standard version RIGID LEVER

inserts		page:
CD	80 poles + ⊕	73
CDD	144 poles + ⊕	82
CDS	54 poles + ⊕	-
CDSH	54 poles + ⊕	90
CNE	32 poles + ⊕	114
CSE	32 poles + ⊕	-
CSH	32 poles + ⊕	114
CSH S	32 poles + ⊕	126
CCE	32 poles + ⊕	134
CSS	32 poles + ⊕	152
CTSE (16A) *)	32 poles + ⊕	164
CQE	64 poles + ⊕	172
CME	12+4 (aux) poles + ⊕	142
CMSH	12+4 (aux) poles + ⊕	142
CMCE	12+4 (aux) poles + ⊕	143
CP	12 poles + ⊕	179
MIXO	4 + 4 modules	262 - 317

*) can be used only in bulkhead mounting housings

insert dimensions:
2 x (77,5 x 27) mm

bulkhead mounting housings with single lever



STAINLESS STEEL RIGID LEVER

bulkhead mounting housings with single lever, with cover



STAINLESS STEEL RIGID LEVER

description

part No.

part No.

with lever

CHIX 32 L

with lever and aluminum cover

CHIX 32 LS

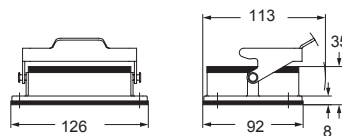
with lever and plastic cover

CHIX 32 LP

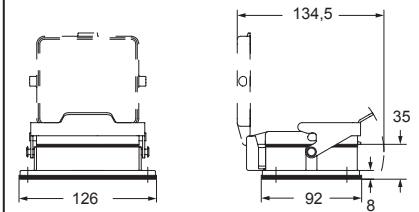
The enclosures ensure IP66/IP69 degree of protection (or IP65 for cover versions) when mated and locked with the closing levers.

Available upon request in "W-TYPE" version for aggressive environment and in 180 °C version for high temperatures.

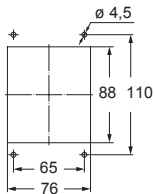
CHIX L



CHIX LS and CHIX LP



panel cut-out for bulkhead mounting housings



cURus
Type 12 / Type 4/4X
(except enclosures with plastic cover)
pending

CHPX C-TYPE standard version RIGID LEVER

inserts		page:
CD	80 poles + ⊕	73
CDD	144 poles + ⊕	82
CDS	54 poles + ⊕	-
CDSH	54 poles + ⊕	90
CNE	32 poles + ⊕	114
CSE	32 poles + ⊕	-
CSH	32 poles + ⊕	114
CSH S	32 poles + ⊕	126
CCE	32 poles + ⊕	134
CSS	32 poles + ⊕	152
CTSE (16A) *	32 poles + ⊕	164
CQE	64 poles + ⊕	172
CME	12+4 (aux) poles + ⊕	142
CMSH	12+4 (aux) poles + ⊕	142
CMCE	12+4 (aux) poles + ⊕	143
CP	12 poles + ⊕	179
MIXO	4 + 4 modules	262 - 317

*) can be used only in bulkhead mounting housings

insert dimensions:
2 x (77,5 x 27) mm

surface mounting housings with single lever



STAINLESS STEEL RIGID LEVER

surface mounting housings with single lever, with cover



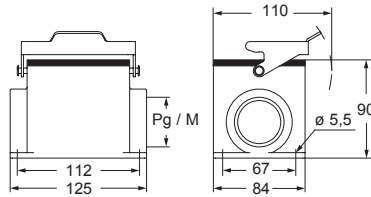
STAINLESS STEEL RIGID LEVER

description	part No.	entry Pg	part No.	entry M	part No.	entry Pg	part No.	entry M
with lever	CHPX 32 L29	29						
with lever	CHPX 32 L	36	MHPX 32 L40	40				
with lever and aluminum cover					CHPX 32 LS29	29		
with lever and aluminum cover					CHPX 32 LS	36	MHPX 32 LS40	40
with lever and plastic cover					CHPX 32 LP29	29		
with lever and plastic cover					CHPX 32 LP	36	MHPX 32 LP40	40
with lever and plastic cover							MHPX 32 LP50	50

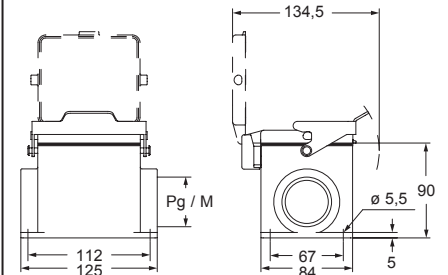
☑ The enclosures ensure IP66/IP69 degree of protection (or IP65 for cover versions) when mated and locked with the closing levers.

Available upon request in "W-TYPE" version for aggressive environment and in 180 °C version for high temperatures.

CHPX L and MHPX L



CHPX LS - MHPX LS and CHPX LP - MHPX LP



cURus
Type 12 / Type 4/4X
(except enclosures with plastic cover)
pending



insulating cable gland or fittings without gasket



cable gland with O-Ring gasket

