

CH C-TYPE standard version

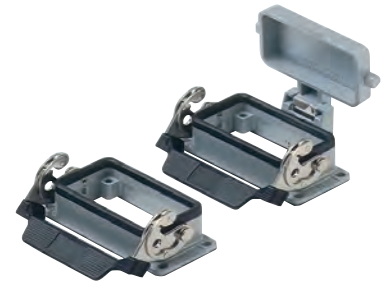
inserts		page:
CD	40 poles + ⊕	70
CDD	72 poles + ⊕	79
CDS	27 poles + ⊕	-
CDSH	27 poles + ⊕	88
CNE	16 poles + ⊕	112
CSE	16 poles + ⊕	-
CSH	16 poles + ⊕	112
CSH S	16 poles + ⊕	124
CCE	16 poles + ⊕	132
CMSH, CMCE	6+2 (aux) poles + ⊕	138 - 139
CSS	16 poles + ⊕	150
CT, CTS (10A) *)	40 poles + ⊕	156
CT, CTSE (16A) *)	16 poles + ⊕	162
CQE	32 poles + ⊕	170
CQEE	40 poles + ⊕	176
CP	6 poles + ⊕	178
CX	6/12, 6/36 and 12/2 poles + ⊕	197 - 199
CX	4/0 and 4/2 poles + ⊕	200 - 201
MIXO	4 modules	262 - 317

*) can be used only in bulkhead mounting housings

bulkhead mounting housings with 2 levers or 4 pegs



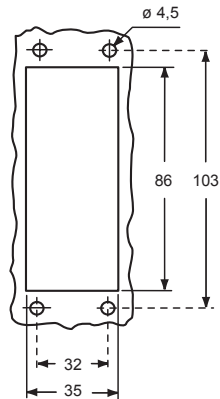
bulkhead mounting housings with single lever



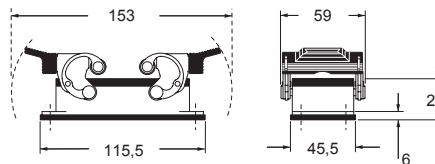
description	part No.	part No.
with one or two levers	CHI 16	CHI 16 L
with pegs ¹⁾	CHI 16 C	
with pegs and aluminum cover ¹⁾	CHI 16 CS	
with pegs and plastic cover ¹⁾	CHI 16 CP	
with lever and aluminum cover		CHI 16 LS

¹⁾ may be combined with enclosures:
 - CHO/CAO 16 X and CHV/CAV 16 X
 - MHO/MAO 16 X and MHV/MAV 16 X

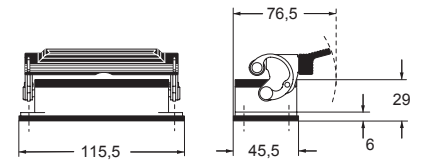
panel cut-out for bulkhead mounting housings



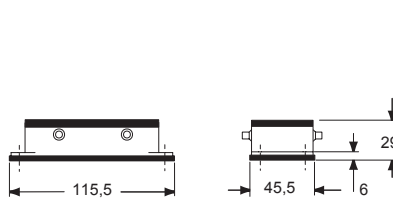
CHI ▲



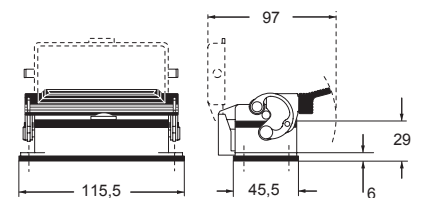
CHI L ▲



CHI C ▲



CHI LS ●



Q IMPORTANT NOTE: The enclosures ensure IP66/IP69 degree of protection (or IP65 for hinged cover versions) when mated and locked with the closing levers. The cover (CS, CP) only ensures mechanical protection, but does not ensure IP65 degree of protection.

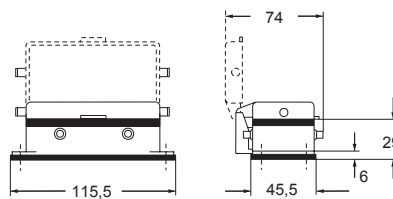
CR CLK
locking device for CLASS locking levers (page 666)



CAUS® Type 4/4X/12
(except enclosures with plastic cover)



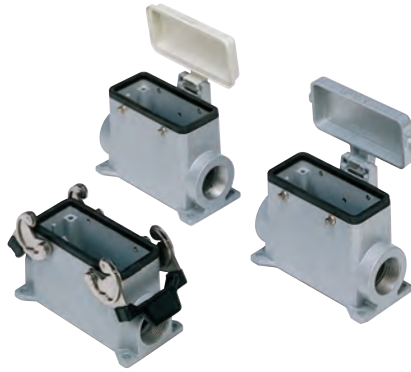
CHI CS/CP ●



CH - CA and MH - MA C-TYPE standard version

inserts		page:
CD	40 poles + ⊕	70
CDD	72 poles + ⊕	79
CDS	27 poles + ⊕	-
CDSH	27 poles + ⊕	88
CNE	16 poles + ⊕	112
CSE	16 poles + ⊕	-
CSH	16 poles + ⊕	112
CSH S	16 poles + ⊕	124
CCE	16 poles + ⊕	132
CMSH, CMCE	6+2 (aux) poles + ⊕	138 - 139
CSS	16 poles + ⊕	150
CQE	32 poles + ⊕	170
CQEE	40 poles + ⊕	176
CP	6 poles + ⊕	178
CX	6/12, 6/36 and 12/2 poles + ⊕	197 - 199
CX	4/0 and 4/2 poles + ⊕	200 - 201
MIXO	4 modules	262 - 317

surface mounting housings with 2 levers or 4 pegs



surface mounting housings with single lever



description	part No.	entry Pg	part No.	entry M	part No.	entry Pg	part No.	entry M
with lever/s	CHP 16	21	MHP 16.25	25	CHP 16 L	21	MHP 16 L25	25
with lever/s	CHP 16.2	21 x 2	MHP 16.225	25 x 2	CHP 16 L2	21 x 2	MHP 16 L225	25 x 2
with levers, high construction 1)			MAP 16.25	25				
with levers, high construction 1)			MAP 16.225	25 x 2				
with lever/s, high construction	CAP 16.21	21	MAP 16.32	32	CAP 16 L	21	MAP 16 L32	32
with lever/s, high construction	CAP 16.221	21 x 2	MAP 16.232	32 x 2	CAP 16 L2	21 x 2	MAP 16 L232	32 x 2
with lever/s, high construction	CAP 16.29	29	MAP 16.40	40	CAP 16 L29	29	MAP 16 L40	40
with lever/s, high construction	CAP 16.229	29 x 2	MAP 16.240	40 x 2	CAP 16 L229	29 x 2	MAP 16 L240	40 x 2
with pegs and aluminum cover 2)	CHP 16 CS	21	MHP 16 CS25	25				
with pegs and aluminum cover 2)	CHP 16 CS2	21 x 2	MHP 16 CS225	25 x 2				
with pegs and aluminum cover, high construction 2)	CAP 16 CS	21	MAP 16 CS32	32				
with pegs and aluminum cover, high construction 2)	CAP 16 CS2	21 x 2	MAP 16 CS232	32 x 2				
with pegs and aluminum cover, high construction 2)	CAP 16 CS29	29	MAP 16 CS40	40				
with pegs and aluminum cover, high construction 2)	CAP 16 CS229	29 x 2	MAP 16 CS240	40 x 2				
with pegs and plastic cover 2)	CHP 16 CP	21	MHP 16 CP25	25				
with pegs and plastic cover 2)	CHP 16 CP2	21 x 2	MHP 16 CP225	25 x 2				
with pegs and plastic cover, high construction 2)	CAP 16 CP	21	MAP 16 CP32	32				
with pegs and plastic cover, high construction 2)	CAP 16 CP2	21 x 2	MAP 16 CP232	32 x 2				
with pegs and plastic cover, high construction 2)	CAP 16 CP29	29	MAP 16 CP40	40				
with pegs and plastic cover, high construction 2)	CAP 16 CP229	29 x 2	MAP 16 CP240	40 x 2				
with lever and aluminium cover					CHP 16 LS	21	MHP 16 LS25	25
with lever and aluminium cover					CHP 16 LS2	21 x 2	MHP 16 LS225	25 x 2
with lever and aluminium cover, high construction					CAP 16 LS	21	MAP 16 LS32	32
with lever and aluminium cover, high construction					CAP 16 LS2	21 x 2	MAP 16 LS232	32 x 2
with lever and aluminium cover, high construction					CAP 16 LS29	29	MAP 16 LS40	40
with lever and aluminium cover, high construction					CAP 16 LS229	29 x 2	MAP 16 LS240	40 x 2

1) can only be used with a complete cable gland (to be purchased separately)

2) may be combined with enclosures:
 - CHO/CAO 16 X and CHV/CAV 16 X
 - MHO/MAO 16 X and MHV/MAV 16 X

IMPORTANT NOTE: The enclosures ensure IP66/IP69 degree of protection (or IP65 for hinged cover versions) when mated and locked with the closing levers. The cover (CS, CP) only ensures mechanical protection, but does not ensure IP65 degree of protection.

CR CLK
locking device for CLASS locking levers (page 666)



CALUS Type 4/4X/12
(except enclosures with plastic cover)

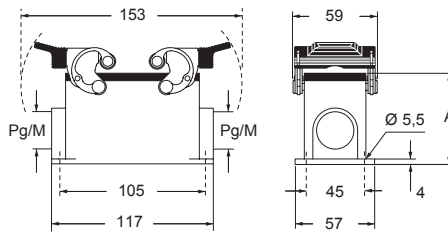


insulating cable gland or fittings without gasket

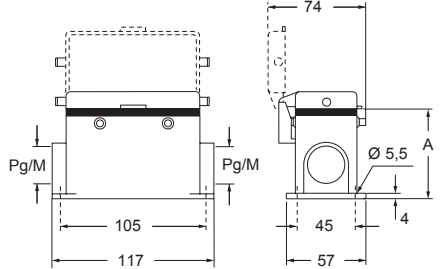


cable gland with O-Ring gasket

CHP - CAP and MHP - MAP ▲

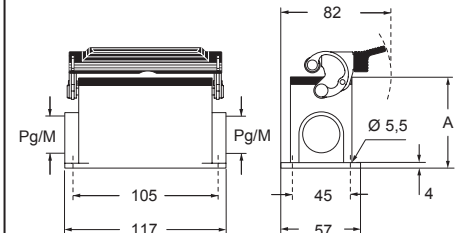


CHP CS/CP - CAP CS/CP and MHP CS/CP - MAP CS/CP ●

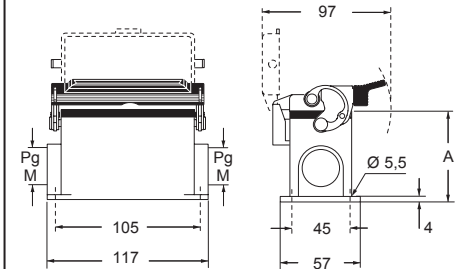


type	A
CHP / MHP	63
CAP / MAP	81
CHP CS / MHP CS	63
CAP CS / MAP CS	81
CHP CP / MHP CP	63
CAP CP / MAP CP	81

CHP L - CAP L and MHP L - MAP L ▲



CHP LS - CAP LS and MHP LS - MAP LS ●



type	A
CHP L / MHP L	63
CAP L / MAP L	81
CHP LS / MHP LS	63
CAP LS / MAP LS	81

CH - CA - CF and MH - MA - MF C-TYPE standard version

inserts		page:
CD	40 poles + ⊕	70
CDD	72 poles + ⊕	79
CDS	27 poles + ⊕	-
CDSH	27 poles + ⊕	88
CNE	16 poles + ⊕	112
CSE	16 poles + ⊕	-
CSH	16 poles + ⊕	112
CSH S	16 poles + ⊕	124
CCE	16 poles + ⊕	132
CMSH, CMCE	6+2 (aux) poles + ⊕	138 - 139
CSS	16 poles + ⊕	150
CQE	32 poles + ⊕	170
CQEE	40 poles + ⊕	176
CP	6 poles + ⊕	178
CX	6/12, 6/36 and 12/2 poles + ⊕	197 - 199
CX	4/0 and 4/2 poles + ⊕	200 - 201
MIXO	4 modules	262 - 317

hoods with 4 pegs



hoods with 4 pegs M40 cable entry with 20 mm thread length



description	part No.	entry Pg	part No.	entry M	part No.	entry Pg	part No.	entry M
with pegs, side entry	CHO 16	21	MHO 16.25	25				
with pegs, side entry			MHO 16.32	32				
with pegs, side entry, high construction	CAO 16.21	21	MAO 16.32	32				
with pegs, side entry, high construction	CAO 16.29	29	MAO 16.40	40				
with pegs, side entry, high construction, without adapter 1)					CFO 16.21	21	MFO 16.32	32
with pegs, side entry, high construction, without adapter 1)					CFO 16.29	29	MFO 16.40	40
with pegs, top entry	CHV 16	21						
with pegs, top entry 2)			MHV 16.25	25				
with pegs, top entry			MHV 16.32	32				
with pegs, top entry, high construction	CAV 16.21	21	MAV 16.32	32				
with pegs, top entry, high construction	CAV 16.29	29	MAV 16.40	40				
with pegs, top entry, high construction, without adapter 1)					CFV 16.21	21	MFV 16.32	32
with pegs, top entry, high construction, without adapter 1)					CFV 16.29	29	MFV 16.40	40
with pegs, frontal entry, high construction	CAF 16	21	MAF 16.25	25				
with pegs, frontal entry, high construction, without adapter 1)	CFF 16	21	MFF 16.25	25				

1) enclosure without adapter, threaded on the body, to be used only with a complete cable gland.

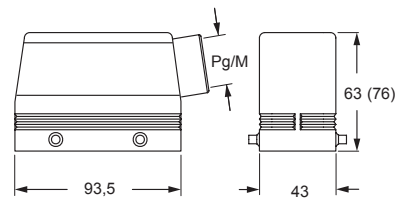
2) can only be used with a complete cable gland (to be purchased separately).

IP degrees are according to the type of lever of the counterpart enclosures.

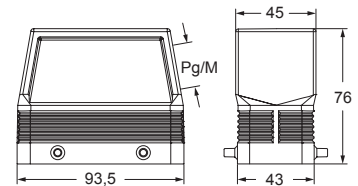
Alternatively, hoods with pegs may be coupled with fixed enclosures:

- C-TYPE, IP65 or IP66/IP69 stainless steel lever, from page 402 to page 410
- C7, IP66/IP67/IP69 stainless steel lever, page 439
- CV, IP65 or IP66/IP69 stainless steel lever, page 454 and 455.

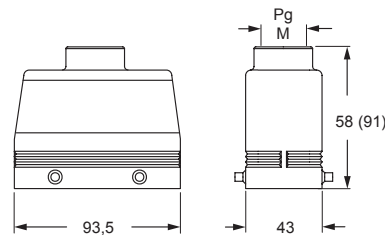
CHO (CAO) and MHO (MAO)



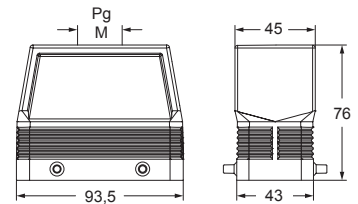
CFO and MFO



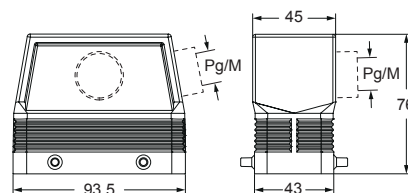
CHV (CAV) and MHV (MAV)



CFV and MFV



CAF/CFF and MAF/MFF



CALUS Type 4/4X/12



insulating cable gland or fittings without gasket



cable gland with O-Ring gasket
IP67 if hoods without adapters coupled with IP67 housings

CH - CA - CF and MH - MA - MF C-TYPE standard version

inserts		page:
CD	40 poles + ⊕	70
CDD	72 poles + ⊕	79
CDS	27 poles + ⊕	-
CDSH	27 poles + ⊕	88
CNE	16 poles + ⊕	112
CSE	16 poles + ⊕	-
CSH	16 poles + ⊕	112
CSH S	16 poles + ⊕	124
CCE	16 poles + ⊕	132
CMSH, CMCE	6+2 (aux) poles + ⊕	138 - 139
CSS	16 poles + ⊕	150
CQE	32 poles + ⊕	170
CQEE	40 poles + ⊕	176
CP	6 poles + ⊕	178
CX	6/12, 6/36 and 12/2 poles + ⊕	197 - 199
CX	4/0 and 4/2 poles + ⊕	200 - 201
MIXO	4 modules	262 - 317

hoods with 2 pegs



hoods with 2 pegs

M40 cable entry with 20 mm thread length



description	part No.	entry Pg	part No.	entry M	part No.	entry Pg	part No.	entry M
with pegs, side entry	CHO 16 L	21	MHO 16 L25	25				
with pegs, side entry			MHO 16 L32	32				
with pegs, side entry, high construction	CAO 16 L21	21	MAO 16 L32	32				
with pegs, side entry, high construction	CAO 16 L29	29	MAO 16 L40	40				
with pegs, side entry, high construction, without adapter ¹⁾					CFO 16 L21	21	MFO 16 L32	32
with pegs, side entry, high construction, without adapter ¹⁾					CFO 16 L29	29	MFO 16 L40	40
with pegs, top entry	CHV 16 L	21						
with pegs, top entry ²⁾			MHV 16 L25	25				
with pegs, top entry			MHV 16 L32	32				
with pegs, top entry, high construction	CAV 16 L21	21	MAV 16 L32	32				
with pegs, top entry, high construction	CAV 16 L29	29	MAV 16 L40	40				
with pegs, top entry, high construction, without adapter ¹⁾					CFV 16 L21	21	MFV 16 L32	32
with pegs, top entry, high construction, without adapter ¹⁾					CFV 16 L29	29	MFV 16 L40	40

¹⁾ enclosure without adapter, threaded on the body, to be used only with a complete cable gland.

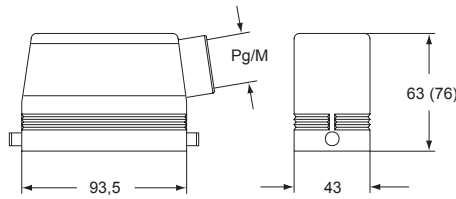
²⁾ can only be used with a complete cable gland (to be purchased separately).

IP degrees are according to the type of lever of the counterpart enclosures.

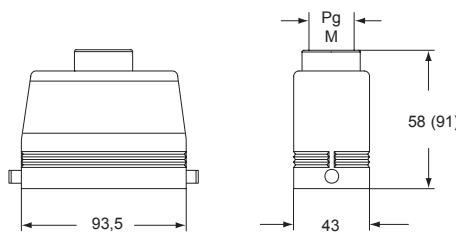
Alternatively, hoods with pegs may be coupled with fixed enclosures:

- C-TYPE, IP65 or IP66/IP69 stainless steel lever, from page 402 to page 410
- CV, IP65 or IP66/IP69 stainless steel lever, page 454 and 455

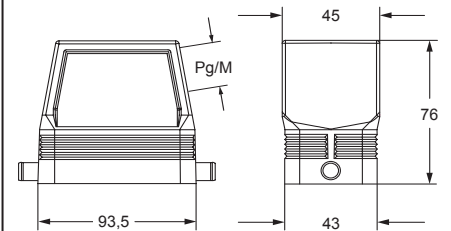
CHO L (CAO L) and MHO L (MAO L)



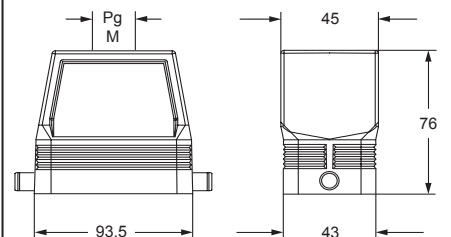
CHV L (CAV L) and MHV L (MAV L)



CFO L and MFO L



CFV L and MFV L



CAIUS® Type 4/4X/12

insulating cable gland or fittings without gasket

cable gland with O-Ring gasket

CA - CF and MA - MF C-TYPE standard version

inserts		page:
CD	40 poles + ⊕	70
CDD	72 poles + ⊕	79
CDS	27 poles + ⊕	-
CDSH	27 poles + ⊕	88
CNE	16 poles + ⊕	112
CSE	16 poles + ⊕	-
CSH	16 poles + ⊕	112
CSH S	16 poles + ⊕	124
CCE	16 poles + ⊕	132
CMSH, CMCE	6+2 (aux) poles + ⊕	138 - 139
CSS	16 poles + ⊕	150
CQE	32 poles + ⊕	170
CQEE	40 poles + ⊕	176
CP	6 poles + ⊕	178
CX	6/12, 6/36 and 12/2 poles + ⊕	197 - 199
CX	4/0 and 4/2 poles + ⊕	200 - 201
MIXO	4 modules	262 - 317

hoods with double top entry



hoods with double front entry



description	part No.	entry Pg	part No.	entry M	part No.	entry Pg	part No.	entry M
with pegs for two levers used with enclosures size "77.27"	CAV 16.216	16 x 2	MAV 16.220	20 x 2				
used with enclosures size "77.27"	CAV 16.221	21 x 2	MAV 16.225	25 x 2				
with pegs for 2 levers, without adapter 1) used with enclosures size "77.27"	CFV 16.216	16 x 2	MFV 16.220	20 x 2				
used with enclosures size "77.27"	CFV 16.221	21 x 2	MFV 16.225	25 x 2				
with pegs for two levers used with enclosures size "77.27"					CAF 16.221	21 x 2	MAF 16.225	25 x 2
with pegs for 2 levers, without adapter 1) used with enclosures size "77.27"					CAF 16.221	21 x 2	MAF 16.225	25 x 2

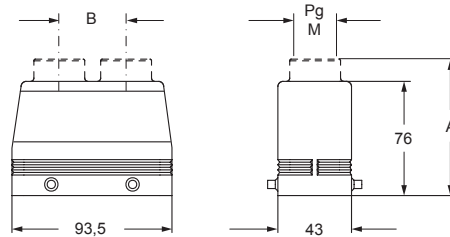
1) enclosure without adapter, threaded on the body, to be used only with a complete cable gland.

IP degrees are according to the type of lever of the counterpart enclosures.

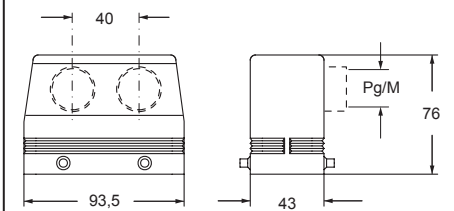
Alternatively, hoods with pegs may be coupled with fixed enclosures:

- C-TYPE, IP65 or IP66/IP69 stainless steel lever, from page 402 to page 410
- C7, IP66/IP67/IP69 stainless steel lever, page 439
- CV, IP65 or IP66/IP69 stainless steel lever, page 454 and 455

CAV/CFV and MAV/MFV



CAF/CFF and MAF/MFF



part No.	A	B
CAV 16.216 - MAV 16.220	89 (90,5)	35 (30)
CAV 16.221 - MAV 16.225	90,5 (91)	40
CFV 16.216 - MFV 16.220	-	35 (30)
CFV 16.221 - MFV 16.225	-	40

CAIUS® Type 4/4X/12



insulating cable gland or fittings without gasket



cable gland with O-Ring gasket
IP67 if hoods without adapters coupled with IP67 housings

C-TYPE

CI and MI C-TYPE standard version

inserts		page:
CD	40 poles + ⊕	70
CDD	72 poles + ⊕	79
CDS	27 poles + ⊕	-
CDSH	27 poles + ⊕	88
CNE	16 poles + ⊕	112
CSE	16 poles + ⊕	-
CSH	16 poles + ⊕	112
CSH S	16 poles + ⊕	124
CCE	16 poles + ⊕	132
CMSH, CMCE	6+2 (aux) poles + ⊕	138 - 139
CSS	16 poles + ⊕	150
CQE	32 poles + ⊕	170
CQEE	40 poles + ⊕	176
CP	6 poles + ⊕	178
CX	6/12, 6/36 and 12/2 poles + ⊕	197 - 199
CX	4/0 and 4/2 poles + ⊕	200 - 201
MIXO	4 modules	262 - 317

inclined hoods for 2 levers with side entry



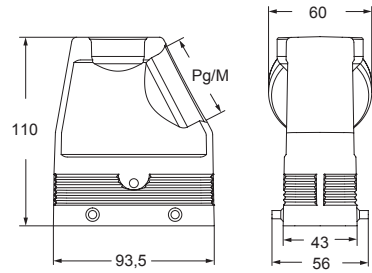
inclined hoods for 2 levers with top entry



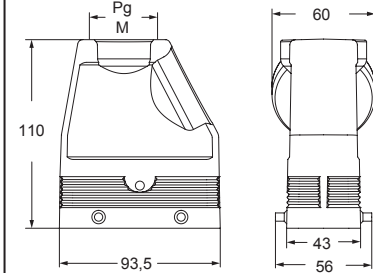
description	part No.	entry Pg	part No.	entry M	part No.	entry Pg	part No.	entry M
used with enclosures size "77.27" with pegs for two levers, side entry			MIO 16.40	40				
with pegs for two levers, side entry	CIO 16.36	36	MIO 16.50	50				
used with enclosures size "77.27" with pegs for two levers, top entry					CIV 16.29	29	MIV 16.40	40

IP degrees are according to the type of lever of the counterpart enclosures.
 Alternatively, hoods with pegs may be coupled with fixed enclosures:
 - C-TYPE, IP65 or IP66/IP69 stainless steel lever, from page 402 to page 410
 - C7, IP66/**IP67**/IP69 stainless steel lever, page 439
 - CV, IP65 or IP66/IP69 stainless steel lever, page 454 and 455

CIO and MIO



CIV and MIV



CAIUS® Type 4/4X/12

- insulating cable gland or fittings without gasket
- cable gland with O-Ring gasket according to the type of lever

CH - CA - CF and MH - MA - MF C-TYPE standard version

inserts		page:
CD	40 poles + ⊕	70
CDD	72 poles + ⊕	79
CDS	27 poles + ⊕	-
CDSH	27 poles + ⊕	88
CNE	16 poles + ⊕	112
CSE	16 poles + ⊕	-
CSH	16 poles + ⊕	112
CSH S	16 poles + ⊕	124
CCE	16 poles + ⊕	132
CMSH, CMCE	6+2 (aux) poles + ⊕	138 - 139
CSS	16 poles + ⊕	150
CQE	32 poles + ⊕	170
CQEE	40 poles + ⊕	176
CP	6 poles + ⊕	178
CX	6/12, 6/36 and 12/2 poles + ⊕	197 - 199
CX	4/0 and 4/2 poles + ⊕	200 - 201
MIXO	4 modules	262 - 317

hoods with 2 levers



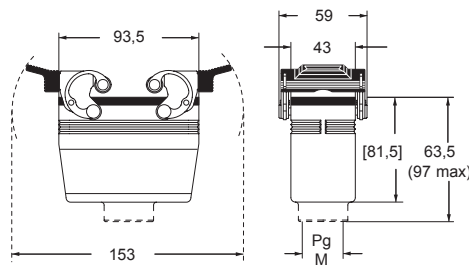
hoods with 2 levers
M40 cable entry with 20 mm thread length



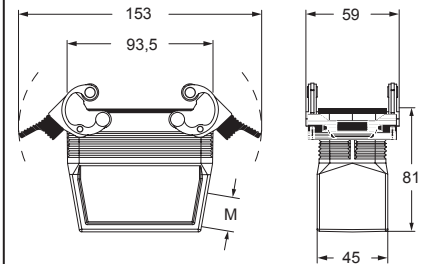
description	part No.	entry Pg	part No.	entry M	part No.	entry M
with levers and gasket, side entry, high construction, without adapter ¹⁾					MFO 16 G40	40
with levers and gasket, top entry	CHV 16 G	21	MHV 16 G32	32		
with levers and gasket, top entry, high construction	CAV 16 G	21	MAV 16 G25	25		
with levers and gasket, top entry, high construction	CAV 16 G29	29	MAV 16 G32	32		
with levers and gasket, top entry, high construction			MAV 16 G40	40		
with levers and gasket, top entry, high construction, without adapter ¹⁾	CFV 16 G	21	MFV 16 G25	25		
with levers and gasket, top entry, high construction, without adapter ¹⁾	CFV 16 G29	29	MFV 16 G32	32		
with levers and gasket, top entry, high construction, without adapter ¹⁾					MFV 16 G40	40

¹⁾ enclosure without adapter, threaded on the body, to be used only with a complete cable gland.

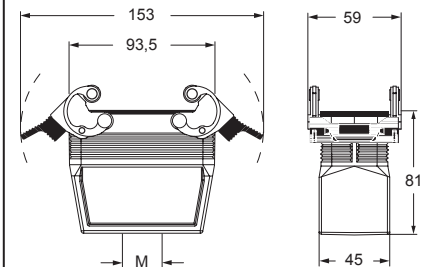
**CHV G (CAV G) and [CFV G],
MHV G (MAV G) and [MFV G]**




MFO 16 G40




MFV 16 G40



CAIUS® Type 4/4X/12

 insulating cable gland or fittings without gasket

 cable gland with O-Ring gasket

C-TYPE

CH - CA - CF and MH - MA - MF C-TYPE standard version

inserts		page:
CD	40 poles + ⊕	70
CDD	72 poles + ⊕	79
CDS	27 poles + ⊕	-
CDSH	27 poles + ⊕	88
CNE	16 poles + ⊕	112
CSE	16 poles + ⊕	-
CSH	16 poles + ⊕	112
CSH S	16 poles + ⊕	124
CCE	16 poles + ⊕	132
CMSH, CMCE	6+2 (aux) poles + ⊕	138 - 139
CSS	16 poles + ⊕	150
CQE	32 poles + ⊕	170
CQEE	40 poles + ⊕	176
CP	6 poles + ⊕	178
CX	6/12, 6/36 and 12/2 poles + ⊕	197 - 199
CX	4/0 and 4/2 poles + ⊕	200 - 201
MIXO	4 modules	262 - 317

hoods with 1 lever



hoods with 1 lever

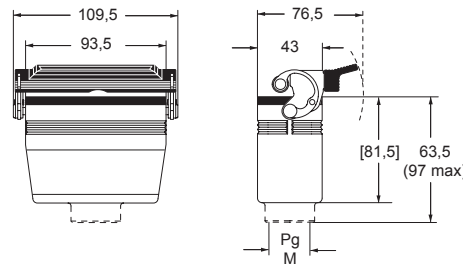
M40 cable entry with 20 mm thread length



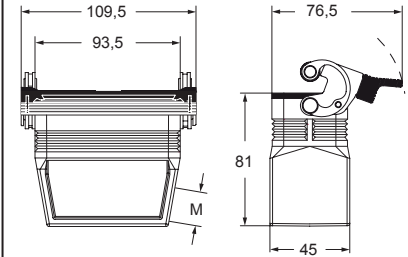
description	part No.	entry Pg	part No.	entry M	part No.	entry M
with lever and gasket, side entry, high construction, without adapter 1)					MFO 16 LG40	40
with lever and gasket, top entry	CHV 16 LG	21	MHV 16 LG32	32		
with lever and gasket, top entry, high construction	CAV 16 LG21	21	MAV 16 LG25	25		
with lever and gasket, top entry, high construction	CAV 16 LG29	29	MAV 16 LG32	32		
with lever and gasket, top entry, high construction			MAV 16 LG40	40		
with lever and gasket, top entry, high construction, without adapter 1)	CFV 16 LG21	21	MFV 16 LG25	25		
with lever and gasket, top entry, high construction, without adapter 1)	CFV 16 LG29	29	MFV 16 LG32	32		
with lever and gasket, top entry, high construction, without adapter 1)					MFV 16 LG40	40

1) enclosure without adapter, threaded on the body, to be used only with a complete cable gland.

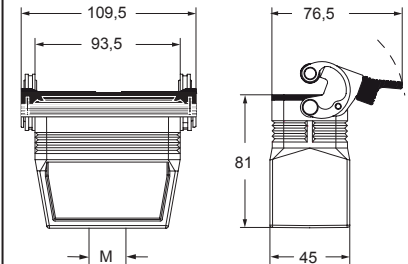
CHV LG (CAV LG) and [CFV LG], MHV LG (MAV LG) and [MFV LG]



MFO 10 LG40



MFV 10 LG40



CAV® Type 4/4X/12

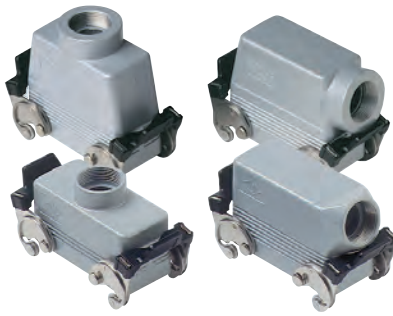
insulating cable gland or fittings without gasket

cable gland with O-Ring gasket

CH - CA and MH - MA C-TYPE standard version

inserts		page:
CD	40 poles + ⊕	70
CDD	72 poles + ⊕	79
CDS	27 poles + ⊕	-
CDSH	27 poles + ⊕	88
CNE	16 poles + ⊕	112
CSE	16 poles + ⊕	-
CSH	16 poles + ⊕	112
CSH S	16 poles + ⊕	124
CCE	16 poles + ⊕	132
CMSH, CMCE	6+2 (aux) poles + ⊕	138 - 139
CSS	16 poles + ⊕	150
CQE	32 poles + ⊕	170
CQEE	40 poles + ⊕	176
CP	6 poles + ⊕	178
CX	6/12, 6/36 and 12/2 poles + ⊕	197 - 199
CX	4/0 and 4/2 poles + ⊕	200 - 201
MIXO	4 modules	262 - 317

hoods with 2 levers



covers



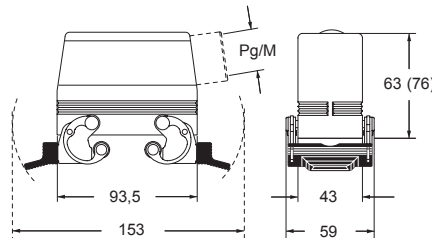
description	part No.	entry Pg	part No.	entry M	part No. (with eyelet)	part No. (with loop)
with levers, side entry ¹⁾	CHO 16 X	21	MHO 16 X25	25		
with levers, side entry ¹⁾			MHO 16 X32	32		
with levers, side entry, high construction ¹⁾	CAO 16 X	21	MAO 16 X32	32		
with levers, side entry, high construction ¹⁾	CAO 16 X29	29	MAO 16 X40	40		
with levers, top entry ¹⁾	CHV 16 X	21	MHV 16 X25	25		
with levers, top entry ^{1) 3)}			MHV 16 X32	32		
with levers, top entry ¹⁾			MAV 16 X32	32		
with levers, top entry, high construction ¹⁾	CAV 16 X	21	MAV 16 X40	40		
with levers, top entry, high construction ¹⁾	CAV 16 X29	29				
with 4 pegs (for enclosures with 2 levers with gasket)					CHC 16	CHC 16 S
with 4 pegs and gasket (for enclosures with 2 levers) ²⁾						CHC 16 C
with 2 pegs (for enclosures with 1 lever with gasket)					CHC 16 L	CHC 16 SL
with 2 levers (for hoods with 4 pegs)						CHC 16 G
with 1 lever (for hoods with 2 pegs)						CHC 16 LG

¹⁾ may be combined with enclosures:
 - CHI/CHP/CAP 16 CS/CP/C
 - MHP/MAP 16 CS/CP

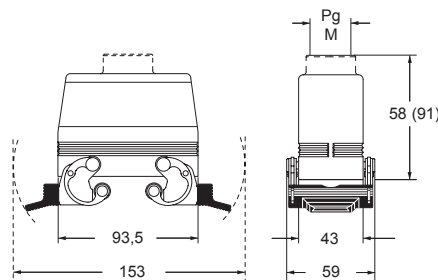
²⁾ may be combined with enclosures:
 - CHO/CAO 16 X and CHV/CAV 16 X
 - MHO/MAO 16 X and MHV/MAV 16 X

³⁾ can only be used with a complete cable gland (to be purchased separately).

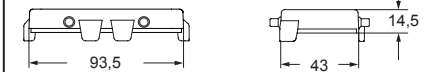
CHO X (CAO X) and MHO X (MAO X)



CHV X (CAV X) and MHV X (MAV X)



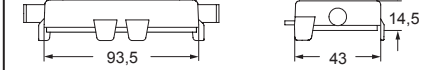
CHC (S)



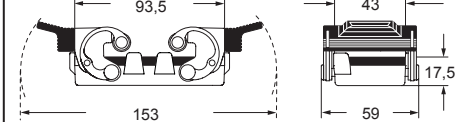
CHC C



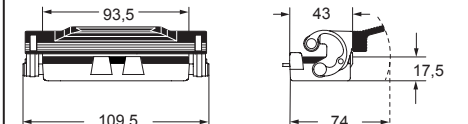
CHC L (SL)



CHC G



CHC LG



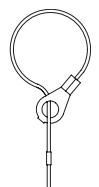
For fixing on housings

eyelet



For fixing on hoods

loop



CAIUS Type 4/4X/12



insulating cable gland or fittings without gasket



cable gland with O-Ring gasket

CAC C-TYPE standard version

inserts		page:
CD	40 poles + ⊕	70
CDD	72 poles + ⊕	79
CDS	27 poles + ⊕	-
CDSH	27 poles + ⊕	88
CNE	16 poles + ⊕	112
CSE	16 poles + ⊕	-
CSH	16 poles + ⊕	112
CSH S	16 poles + ⊕	124
CCE	16 poles + ⊕	132
CMSH, CMCE	6+2 (aux) poles + ⊕	138 - 139
CSS	16 poles + ⊕	150
CQE	32 poles + ⊕	170
CQEE	40 poles + ⊕	176
CP	6 poles + ⊕	178
CX	6/12, 6/36 and 12/2 poles + ⊕	197 - 199
CX	4/0 and 4/2 poles + ⊕	200 - 201
MIXO	4 modules	262 - 317

hoods without entry, to be drilled



hoods without entry, to be drilled



description	part No. (with 4 pegs)	part No. (with 2 pegs)
-------------	---------------------------	---------------------------

with pegs, high construction

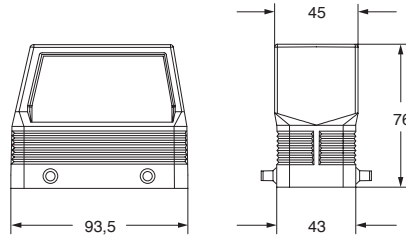
CAC 16

CAC 16 L

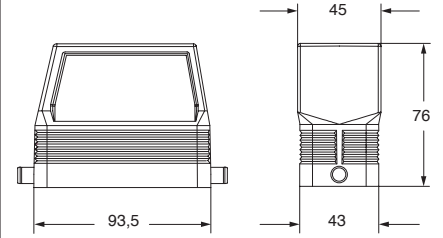
Alternatively, hoods with pegs may be coupled with fixed enclosures:

- C-TYPE, IP65 or IP66/IP69 stainless steel lever, from page 402 to page 410
- C7, IP66/IP67/IP69 stainless steel lever, page 439
- CV, IP65 or IP66/IP69 stainless steel lever, page 454 and 455

CAC 16 ●



CAC 16 L ▲



CAI[®] US Type 4/4X/12



● IP67 if coupled with IP67 housings