

CK - MK standard insulating version

inserts		page:
CK	3 poles + ⊕	58
CK	4 poles + ⊕	58
CKS	3 poles + ⊕	-
CKS	4 poles + ⊕	-
CKSH	3 poles + ⊕	63
CKSH	4 poles + ⊕	63
CD	7 poles + ⊕	66
CD	8 poles	67
CQ4	2 poles + ⊕	182
CQ4 H	2 poles + ⊕	183
CQ4	3 poles + ⊕	184
CQ	5 poles + ⊕	186
CQ	7 poles + ⊕	187
CQ	12 poles + ⊕	189
CQ	21 poles	190

only for I (straight) housings (if the counterpart has glued gasket):

CJ KF	223
CJK 8FT	226
CJK 8IFT	226, 228
CUK 2FT	236
CUK 3FT	236
CLK 04 SC	239
CX 1/2 BD	243
CXL 2/4 SF, CXL 2/4 SM	250
CXL SF, CXL SM	250

bulkhead mounting housings



angled bulkhead mounting housings



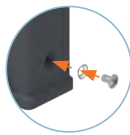
description	part No.	part No. (entry Pg 11)	part No. (entry M20)
with lever	CK 03 I (light grey RAL 7035)		
with lever	CK 03 IN (jet black RAL 9005)		
without cable entry, with lever 1)		CK 03 IA (light grey RAL 7035)	
without cable entry, with lever 1)		CK 03 IAN (jet black RAL 9005)	
with cable entry and lever 1)		CK 03 IAPS (light grey RAL 7035)	MK IAP20 (light grey RAL 7035)
with cable entry and lever 1)		CK 03 IAPNS (jet black RAL 9005)	MK IAPN20 (jet black RAL 9005)
gasket and screw kit for IP66/IP67/IP69 2)	CKR 65	CKR 65	
gasket and screw kit for IP66/IP67/IP69 2) specific for CD 07/08 inserts	CKR 65 D	CKR 65 D	

1) Not suitable for CQ4 series inserts

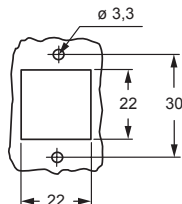
2) To obtain the IP66/IP67/IP69 degree of protection it is necessary to replace the fixing screw supplied with all inserts, with the one with gasket included in the kit (to be purchased separately) **except for** the inserts listed below (already supplied with a fixing screw with gasket):

- CQF/M 07, CQF/M 12
- CJ KF
- CJK 8FT /8IFT
- CUK 2FT /3FT
- CX 1/2 BDF/M
- CLK 04 SCF /SCF-H /SCM
- CXL 2/4 SF /SM, CXL SF/M

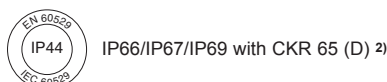
NOTE: The enclosure shown here is an example. The screw and sealing gasket kit can be used with all enclosures' part nos. in this page



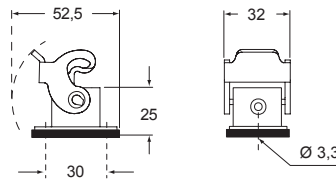
panel cut-out for enclosures



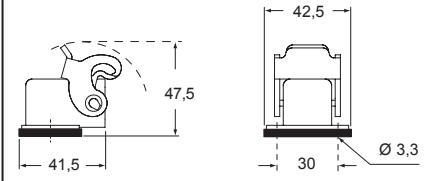
CAIUS Type 12
Type 4/4X only
with CKR 65 (D)



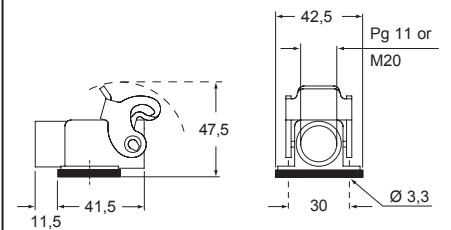
CK I - CK IN



CK IA - CK IAN



CK IAPS - CK IAPSN and MK IAP - MK IAPN



CK - MK

CK - MK standard insulating version

inserts		page:
CK	3 poles + ⊕	58
CK	4 poles + ⊕	58
CKS	3 poles + ⊕	-
CKS	4 poles + ⊕	-
CKSH	3 poles + ⊕	63
CKSH	4 poles + ⊕	63
CD	7 poles + ⊕	66
CD	8 poles	67
CQ4	2 poles + ⊕	182
CQ4 H	2 poles + ⊕	183
CQ4	3 poles + ⊕	184
CQ	5 poles + ⊕	186
CQ	7 poles + ⊕	187
CQ	12 poles + ⊕	189
CQ	21 poles	190

hoods



covers

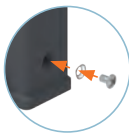


description	part No. (entry Pg 11)	part No. (entry M20)	part No. (with eyelet)	part No. (with loop)
with pegs, top entry 1)	CK 03 VS (light grey RAL 7035)	MK V20 (light grey RAL 7035)		
with pegs, top entry 1)	CK 03 VNS (jet black RAL 9005)	MK VN20 (jet black RAL 9005)		
with pegs, side entry 1)	CK 03 VAS (light grey RAL 7035)	MK VA20 (light grey RAL 7035)		
with pegs, side entry 1)	CK 03 VANS (jet black RAL 9005)	MK VAN20 (jet black RAL 9005)		
with lever, top entry 1)	CK 03 VGS (light grey RAL 7035)	MK VG20 (light grey RAL 7035)		
with lever, top entry 1)	CK 03 VGNS (jet black RAL 9005)	MK VGN20 (jet black RAL 9005)		
with pegs and gasket, for female inserts			CK 03 C (light grey RAL 7035)	CK 03 CS (light grey RAL 7035)
with pegs and gasket, for female inserts			CK 03 CN (jet black RAL 9005)	CK 03 CNS (jet black RAL 9005)
with pegs, for male inserts			CK 03 CA (light grey RAL 7035)	CK 03 CAS (light grey RAL 7035)
with pegs, for male inserts			CK 03 CAN (jet black RAL 9005)	CK 03 CANS (jet black RAL 9005)
with lever and gasket, for female inserts				CK 03 CX (light grey RAL 7035)
with lever and gasket, for female inserts				CK 03 CXN (jet black RAL 9005)
with lever, for male inserts				CK 03 CXA (light grey RAL 7035)
with lever, for male inserts				CK 03 CXAN (jet black RAL 9005)
gasket and screw kit for IP66/IP67/IP69 2)	CKR 65			
gasket and screw kit for IP66/IP67/IP69 2) specific for CD 07/08 inserts	CKR 65 D			

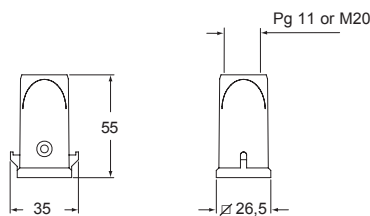
1) Not suitable for CQ4 series inserts

2) To obtain the IP66/IP67/IP69 degree of protection it is necessary to replace the fixing screw supplied with all inserts, with the one with gasket included in the kit (to be purchased separately) **except for** the inserts listed below (already supplied with a fixing screw with gasket):
- CQF/M 07, CQF/M 12

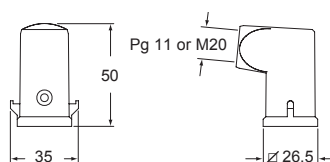
NOTE: The enclosure shown here is an example. The screw and sealing gasket kit can be used with all enclosures' part nos. in this page



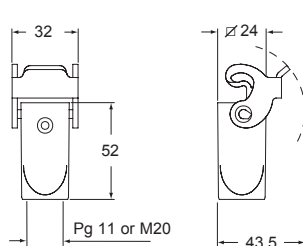
CK VS - CK VNS and MK V - MK VN



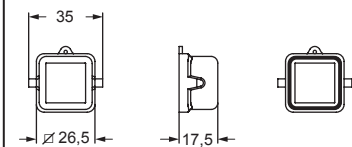
CK VAS - CK VANS and MK VA - MK VAN



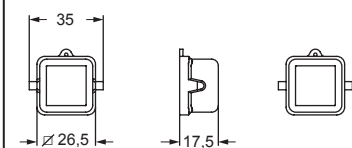
CK VGS - CK VGNS and MK VG - MK VGN



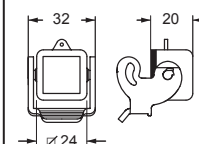
CK C - CK CN - CK CS



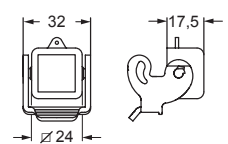
CK CA - CK CAN - CK CAS



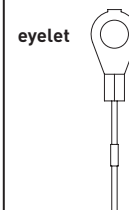
CK CX - CK CXN



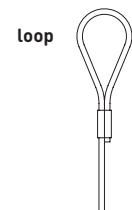
CK CXA - CK CXAN



For fixing on housings



For fixing on hoods



CAIUS Type 12
Type 4/4X only
with CKR 65 (D)



IP66/IP67/IP69 with CKR 65 (D) 2)

MK standard insulating version

inserts		page:
CK	3 poles + ⊕	58
CK	4 poles + ⊕	58
CKS	3 poles + ⊕	-
CKS	4 poles + ⊕	-
CKSH	3 poles + ⊕	63
CKSH	4 poles + ⊕	63
CD	7 poles + ⊕	66
CD	8 poles	67
CQ4	2 poles + ⊕	182
CQ4 H	2 poles + ⊕	183
CQ4	3 poles + ⊕	184
CQ	5 poles + ⊕	186
CQ	7 poles + ⊕	187
CQ	12 poles + ⊕	189
CQ	21 poles	190

hood



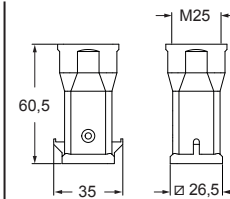
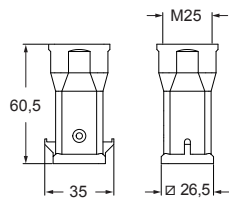
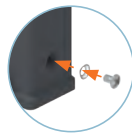
hood



description	part No. (entry M25)	part No. (entry M25)
with pegs, top entry	MK V25 (light grey RAL 7035)	MK VN25 (jet black RAL 9005)
with pegs, top entry		
gasket and screw kit for IP66/IP67/IP69 1)	CKR 65	CKR 65
gasket and screw kit for IP66/IP67/IP69 1) specific for CD 07/08 inserts	CKR 65 D	CKR 65 D

1) To obtain the IP66/IP67/IP69 degree of protection it is necessary to replace the fixing screw supplied with all inserts, with the one with gasket included in the kit (to be purchased separately) **except for** the inserts listed below (already supplied with a fixing screw with gasket):
- CQF/M 07, CQF/M 12

NOTE: The enclosure shown here is an example. The screw and sealing gasket kit can be used with all enclosures' part nos. in this page



CAVUS® Type 12
Type 4/4X only
with CKR 65 (D)



IP66/IP67/IP69 with CKR 65 (D) 1)

MK standard insulating version

inserts	page:
CK 3 and 4 poles + ⊕	58
CKS 3 and 4 poles + ⊕	-
CKSH 3 and 4 poles + ⊕	63
CD 7 poles + ⊕	66
CD 8 poles	67
CQ4 2 poles + ⊕	182
CQ4 H 2 poles + ⊕	183
CQ4 3 poles + ⊕	184
CQ 5 poles + ⊕	186
CQ 7 poles + ⊕	187
CQ 12 poles + ⊕	189
CQ 21 poles	190
CLK 04 SC	239
CX 1/2 BD	243
CXL 2/4 PF, CXL 2/4 PFH	251
CXL 2/4 PM, CXL 2/4 PMH	251
CXL PF, CXL PM	251

hood**description**

part No.
(entry M25)

with lever, top entry

MK VG25 (light grey RAL 7035)

gasket and screw kit
for IP66/IP67/IP69 1)

CKR 65

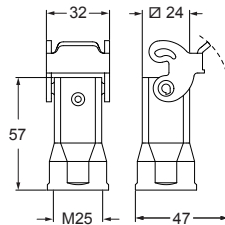
gasket and screw kit for IP66/IP67/IP69 1)
specific for CD 07/08 inserts

CKR 65 D

1) To obtain the IP66/IP67/IP69 degree of protection it is necessary to replace the fixing screw supplied with all inserts, with the one with gasket included in the kit (to be purchased separately) **except for** the inserts listed below (already supplied with a fixing screw with gasket):

- CQF/M 07, CQF/M 12
- CX 1/2 BDF/M
- CLK 04 SCF /SCF-H /SCM
- CXL 2/4 PF /PM /PFH /PMH, CXL PF/PM

NOTE: The enclosure shown here is an example. The screw and sealing gasket kit can be used with all enclosures' part nos. in this page



CAIUS

Type 12
Type 4/4X only
with CKR 65 (D)



IP66/IP67/IP69 with CKR 65 (D) 1)

MK standard insulating version

inserts	page:
CK 3 and 4 poles + ⊕	58
CKS 3 and 4 poles + ⊕	-
CKSH 3 and 4 poles + ⊕	63
CD 7 poles + ⊕	66
CD 8 poles	67
CQ4 2 poles + ⊕	182
CQ4 H 2 poles + ⊕	183
CQ4 3 poles + ⊕	184
CQ 5 poles + ⊕	186
CQ 7 poles + ⊕	187
CQ 12 poles + ⊕	189
CQ 21 poles	190
CLK 04 SC	239
CX 1/2 BD	243
CXL 2/4 PF, CXL 2/4 PFH	251
CXL 2/4 PM, CXL 2/4 PMH	251
CXL PF, CXL PM	251

hood

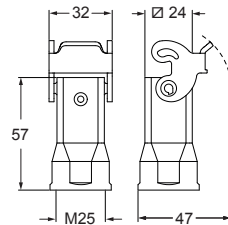
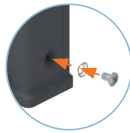


description	part No. (entry M25)
with lever, top entry	MK VGN25 (jet black RAL 9005)
gasket and screw kit for IP66/IP67/IP69 1)	CKR 65
gasket and screw kit for IP66/IP67/IP69 1) specific for CD 07/08 inserts	CKR 65 D

1) To obtain the IP66/IP67/IP69 degree of protection it is necessary to replace the fixing screw supplied with all inserts, with the one with gasket included in the kit (to be purchased separately) **except for** the inserts listed below (already supplied with a fixing screw with gasket):

- CQF/M 07, CQF/M 12
- CX 1/2 BDF/M
- CLK 04 SCF /SCF-H /SCM
- CXL 2/4 PF /PM /PFH /PMH, CXL PF/PM

☑ NOTE: The enclosure shown here is an example. The screw and sealing gasket kit can be used with all enclosures' part nos. in this page



CAIUS®
Type 12
Type 4/4X only
with CKR 65 (D)



IP44 IP66/IP67/IP69 with CKR 65 (D) 1)

CKX standard insulating version

inserts		page:
CK	3 poles + ⊕	58
CK	4 poles + ⊕	58
CKS	3 poles + ⊕	-
CKS	4 poles + ⊕	-
CKSH	3 poles + ⊕	63
CKSH	4 poles + ⊕	63
CD	7 poles + ⊕	66
CD	8 poles	67
CQ4	2 poles + ⊕	182
CQ4 H	2 poles + ⊕	183
CQ4	3 poles + ⊕	184
CQ	5 poles + ⊕	186
CQ	7 poles + ⊕	187
CQ	12 poles + ⊕	189
CQ	21 poles	190

only for I (straight) housings (if the counterpart has glued gasket):

CJ KF		223
CJK 8FT		226
CJK 8IFT	226, 228	
CUK 2FT		236
CUK 3FT		236
CLK 04 SC		239
CX 1/2 BD		243
CXL 2/4 SF, CXL 2/4 SM		250
CXL SF, CXL SM		250

bulkhead mounting housings



angled bulkhead mounting housings



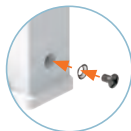
description	part No.	part No. (entry Pg 11)
with stainless steel lever	CKX 03 I (light grey RAL 7035)	
with stainless steel lever	CKX 03 IN (jet black RAL 9005)	
without cable entry, with stainless steel lever 1)		CKX 03 IA
with cable entry and stainless steel lever, with cable gland 1)		CKX 03 IAP
with cable entry and stainless steel lever, without cable gland 1)		CKX 03 IAPS
gasket and screw kit for IP66/IP67/IP69 2)	CKR 65	CKR 65
gasket and screw kit for IP66/IP67/IP69 2) specific for CD 07/08 inserts	CKR 65 D	CKR 65 D

1) Not suitable for CQ4 series inserts

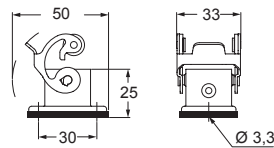
2) To obtain the IP66/IP67/IP69 degree of protection it is necessary to replace the fixing screw supplied with all inserts, with the one with gasket included in the kit (to be purchased separately) **except for** the inserts listed below (already supplied with a fixing screw with gasket):

- CQF/M 07, CQF/M 12
- CJ KF
- CJK 8FT /8IFT
- CUK 2FT /3FT
- CX 1/2 BDF/M
- CLK 04 SCF /SCF-H /SCM
- CXL 2/4 SF /SM, CXL SF/M

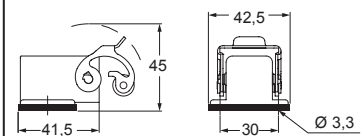
NOTE: The enclosure shown here is an example. The screw and sealing gasket kit can be used with all enclosures' part nos. in this page



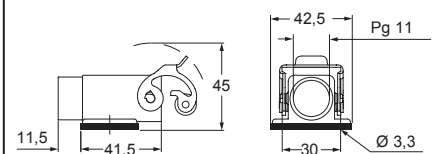
CKX I - CKX IN



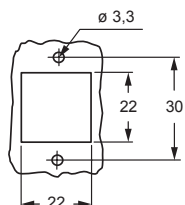
CKX IA



CKX IAP - CKX IAPS



panel cut-out for enclosures



CAUS® Type 12
Type 4/4X only
with CKR 65 (D)



IP66/IP67/IP69 with CKR 65 (D) 2)

CKX standard insulating version

inserts		page:
CK	3 poles + ⊕	58
CK	4 poles + ⊕	58
CKS	3 poles + ⊕	-
CKS	4 poles + ⊕	-
CKSH	3 poles + ⊕	63
CKSH	4 poles + ⊕	63
CD	7 poles + ⊕	66
CD	8 poles	67
CQ	5 poles + ⊕	186
CQ	7 poles + ⊕	187
CQ	12 poles + ⊕	189
CQ	21 poles	190

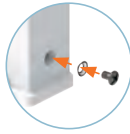
hoods



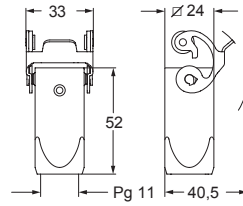
description	part No. (entry Pg 11)
with stainless steel lever, top entry with cable gland	CKX 03 VG
with stainless steel lever, top entry without cable gland	CKX 03 VGS
gasket and screw kit for IP66/IP67/IP69 1)	CKR 65
gasket and screw kit for IP66/IP67/IP69 1) specific for CD 07/08 inserts	CKR 65 D

1) To obtain the IP66/IP67/IP69 degree of protection it is necessary to replace the fixing screw supplied with all inserts, with the one with gasket included in the kit (to be purchased separately) **except for** the inserts listed below (already supplied with a fixing screw with gasket):
- CQF/M 07, CQF/M 12

NOTE: The enclosure shown here is an example. The screw and sealing gasket kit can be used with all enclosures' part nos. in this page



CKX VG - CKX VGS



CAVUS®
Type 12
Type 4/4X only
with CKR 65 (D)



IP44 IP66/IP67/IP69 with CKR 65 (D) 1)

CK standard insulating version DESINA® ▲

inserts	page:
CJ KF	223
CJK 8FT	226
CJK 8IFT	228
CUK 2FT	236
CUK 3FT	236
CLK 04 SC	239
CX 1/2 BD	243
CXL 2/4 SF	250
CXL 2/4 SM	250
CXL SF	250
CXL SM	250

bulkhead mounting housings



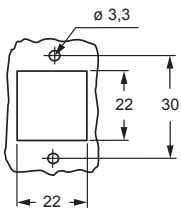
cover



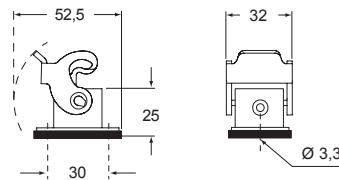
description	part No.	part No.
with lever	CK 03 I (light grey RAL 7035)	
with lever	CK 03 IN (jet black RAL 9005)	
with pegs and glued gasket		CKG 03 C (light grey RAL 7035)
with pegs and glued gasket		CKG 03 CN (jet black RAL 9005)

▲ suitable for DESINA® CXL inserts and CJ, CUK, CLK, CX BD adapters for male inserts without gasket

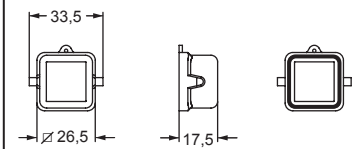
panel cut-out for enclosures



CK I - CK IN



CKG C - CKG CN



CRUS® Type 4/4X/12



CKG - MKG standard insulating version with glued gasket DESINA®

inserts	page:
CJ KM	223
CJK 8MT	226
CJK 8IMT *	226, 228
CUK 2FT	236
CUK 3FT	236
CLK 04 SC *	239
CX 1/2 BD	243
CXL 2/4 PF	251
CXL 2/4 PFH	251
CXL 2/4 PM	251
CXL 2/4 PMH	251
CXL PF	251
CXL PM	251

* cannot be used with angled enclosures
(part No. CKG 03 VA / MKG VA20)

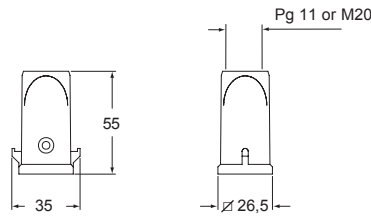
hoods with glued gasket



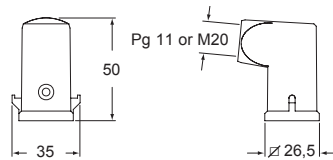
description	part No. (entry Pg 11)	part No. (entry M20)
with pegs and glued gasket, top entry	CKG 03 V (light grey RAL 7035)	MKG V20 (light grey RAL 7035)
with pegs and glued gasket, side entry	CKG 03 VA (light grey RAL 7035)	MKG VA20 (light grey RAL 7035)
with pegs and glued gasket, top entry	CKG 03 VN (jet black RAL 9005)	MKG VN20 (jet black RAL 9005)
with pegs and glued gasket, side entry	CKG 03 VAN (jet black RAL 9005)	MKG VAN20 (jet black RAL 9005)

▲ suitable for DESINA® CXL inserts and CJ, CUK, CLK, CX BD adapters for male inserts without gasket

CKG V - CKG VN and MKG V - MKG VN



CKG VA - CKG VAN and MKG VA - MKG VAN



CRUS Type 4/4X/12



inserts	page:
CJ KM	223
CJK 8MT	226
CJK 8IMT	226, 228
CJK 8M	233
CUK 2FT	236
CUK 3FT	236
CLK 04 SC	239
CX 1/2 BD	243
CXL 2/4 PF	251
CXL 2/4 PFH	251
CXL 2/4 PM	251
CXL 2/4 PMH	251
CXL PF	251
CXL PM	251

hood with glued gasket



hood with glued gasket



description

part No.
(entry M25)

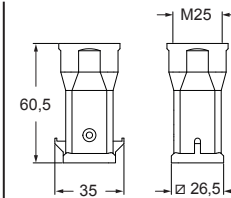
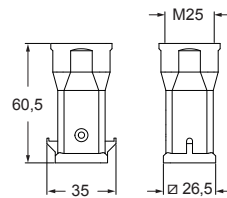
part No.
(entry M25)

with pegs and glued gasket, top entry
with pegs and glued gasket, top entry

MKG V25 (light grey RAL 7035)

MKG VN25 (jet black RAL 9005)

▲ suitable for DESINA® CXL inserts and CJ, CUK, CLK, CX BD adapters for male inserts without gasket



MKG DESINA®

CAIUS Type 4/4X/12



CKA - MKA standard metallic version

inserts		page:
CK	3 poles + ⊕	58
CK	4 poles + ⊕	58
CKS	3 poles + ⊕	-
CKS	4 poles + ⊕	-
CKSH	3 poles + ⊕	63
CKSH	4 poles + ⊕	63
CD	8 poles	67
CQ4	2 poles + ⊕	182
CQ4 H	2 poles + ⊕	183
CQ4	3 poles + ⊕	184
CQ	5 poles + ⊕	186
CQ	7 poles + ⊕	187
CQ	12 poles + ⊕	189
CQ	21 poles	190

only for I (straight) housings (if the counterpart has glued gasket):

CJ KF	223
CJK 8FT	226
CJK 8IFT	226, 228
CUK 2FT	236
CUK 3FT	236
CLK 04 SC	239
CX 1/2 BD	243
CXL 2/4 SF, CXL 2/4 SM	250
CXL SF, CXL SM	250

bulkhead mounting housings



angled bulkhead mounting housings



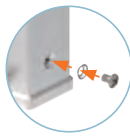
description	part No.	part No. (entry Pg 11)	part No. (entry M20)
with galvanized steel lever	CKA 03 I		
with stainless steel lever	CKAX 03 I		
without cable entry, galvanized steel lever 1)		CKA 03 IA	
without cable entry, stainless steel lever 1)		CKAX 03 IA	
with cable entry, galvanized steel lever 1)		CKA 03 IAPS	MKA IAP20
with cable entry, stainless steel lever 1)		CKAX 03 IAPS	MKAX IAP20
with cable entry, galvanized steel lever, bulkhead hole closed 1)		CKA 03 APS	MKA AP20
with cable entry, stainless steel lever, bulkhead hole closed 1)		CKAX 03 APS	MKAX AP20
gasket and screw kit for IP66/IP67/IP69 2)	CKR 65	CKR 65	
gasket and screw kit for IP66/IP67/IP69 2) specific for CD 08 inserts	CKR 65 D	CKR 65 D	

1) Not suitable for CQ4 series inserts

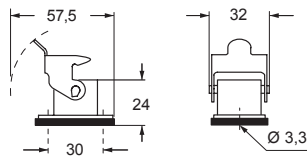
2) To obtain the IP66/IP67/IP69 degree of protection it is necessary to replace the fixing screw supplied with all inserts, with the one with gasket included in the kit (to be purchased separately) **except for** the inserts listed below (already supplied with a fixing screw with gasket):

- CQF/M 07, CQF/M 12
- CJ KF
- CJK 8FT /8IFT
- CUK 2FT /3FT
- CX 1/2 BDF/M
- CLK 04 SCF /SCF-H /SCM
- CXL 2/4 SF /SM, CXL SF/M

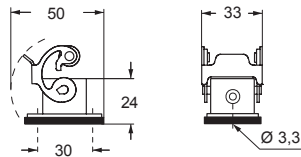
NOTE: The enclosure shown here is an example. The screw and sealing gasket kit can be used with all enclosures' part nos. in this page



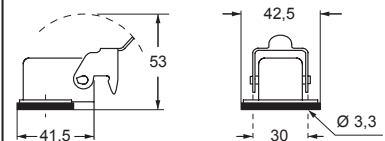
CKA I



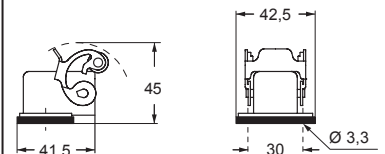
CKAX I



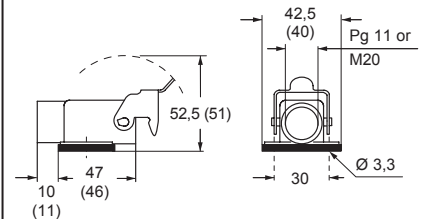
CKA IA



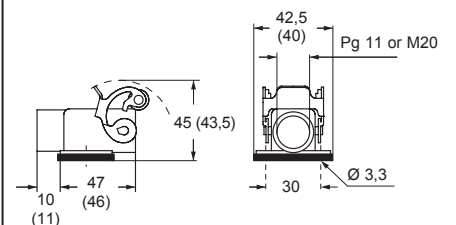
CKAX IA



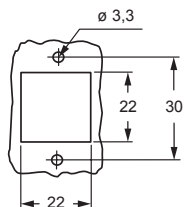
CKA IAPS (CKA APS) and MKA IAP (MKA AP)



CKAX IAPS (CKAX APS) and MKAX IAP (MKAX AP)



panel cut-out for enclosures



Type 12
Type 4/4X only
with CKR 65 (D)



IP66/IP67/IP69 with CKR 65 (D) 2)

CKA - MKA and CKAX - MKAX standard metallic version

inserts		page:
CK	3 poles + ⊕	58
CK	4 poles + ⊕	58
CKS	3 poles + ⊕	-
CKS	4 poles + ⊕	-
CKSH	3 poles + ⊕	63
CKSH	4 poles + ⊕	63
CD	8 poles	67
CQ4	2 poles + ⊕	182
CQ4 H	2 poles + ⊕	183
CQ4	3 poles + ⊕	184
CQ	5 poles + ⊕	186
CQ	7 poles + ⊕	187
CQ	12 poles + ⊕	189
CQ	21 poles	190

angled bulkhead mounting housings



bulkhead mounting housings with SELF-CLOSING cover



description	part No. (entry M20 / M25)	part No.
galvanized steel lever, M20 fixing thread ^(*) 1) 2)	MKA IAF20	
stainless steel lever, M20 fixing thread ^(*) 1) 2)	MKAX IAF20	
galvanized steel lever, M25 fixing thread ^(*) 1) 2)	MKA IAF25	
stainless steel lever, M25 fixing thread ^(*) 1) 2)	MKAX IAF25	
with galvanized steel lever and gasket, for female inserts		CKA 03 ILS
with galvanized steel lever, for male inserts		CKA 03 ILSA
with stainless steel lever and gasket, for female inserts		CKAX 03 ILS
with stainless steel lever, for male inserts		CKAX 03 ILSA
gasket and screw kit for IP66/IP67/IP69 ²⁾	CKR 65	CKR 65
gasket and screw kit for IP66/IP67/IP69 ²⁾ specific for CD 08 inserts	CKR 65 D	CKR 65 D

(*) Locknut supplied on request, see catalogue cable glands (articles AS M20N and AS M25N metallic, AS M20L and AS M25L insulating)

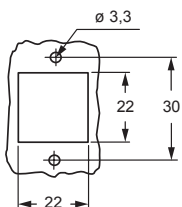
1) Not suitable for CQ4 series inserts

2) To obtain the IP66/IP67/IP69 degree of protection it is necessary to replace the fixing screw supplied with all inserts, with the one with gasket included in the kit (to be purchased separately) **except for** the inserts listed below (already supplied with a fixing screw with gasket):
- CQF/M 07, CQF/M 12

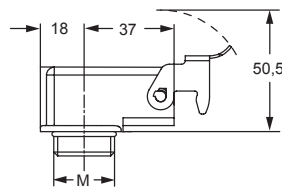
NOTE: The enclosure shown here is an example. The screw and sealing gasket kit can be used with all enclosures' part nos. in this page



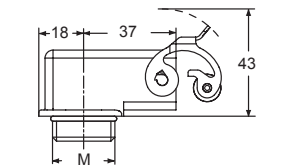
panel cut-out for enclosures CKA ILS/ILSA



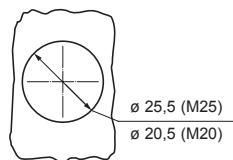
MKA IAF



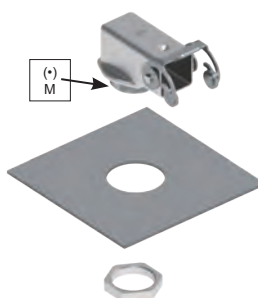
MKAX IAF



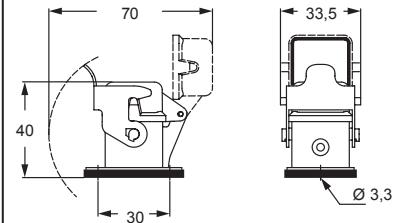
panel cut-out



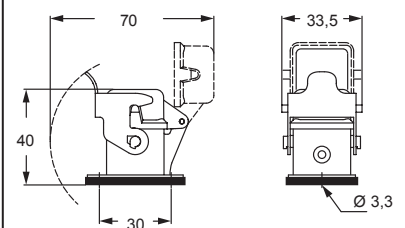
USE OF THE LOCKNUT



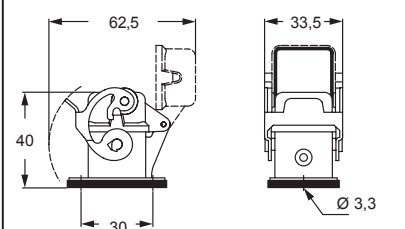
CKA ILS



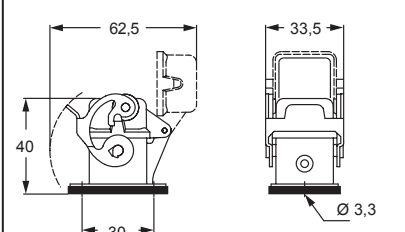
CKA ILSA



CKAX ILS



CKAX ILSA



CAIUS®
Type 12
Type 4/4X only
with CKR 65 (D)



IP66/IP67/IP69 with CKR 65 (D) ²⁾

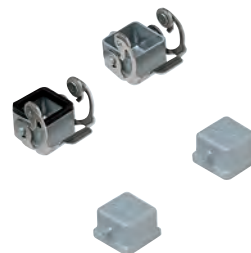
CKA - MKA and CKAX - MKAX standard metallic version

inserts		page:
CK	3 poles + ⊕	58
CK	4 poles + ⊕	58
CKS	3 poles + ⊕	-
CKS	4 poles + ⊕	-
CKSH	3 poles + ⊕	63
CKSH	4 poles + ⊕	63
CD	8 poles	67
CQ4	2 poles + ⊕	182
CQ4 H	2 poles + ⊕	183
CQ4	3 poles + ⊕	184
CQ	5 poles + ⊕	186
CQ	7 poles + ⊕	187
CQ	12 poles + ⊕	189
CQ	21 poles	190

hoods



covers



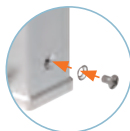
description	part No. (entry Pg 11)	part No. (entry M20)	part No. (with eyelet)	part No. (with loop)
with pegs, top entry ¹⁾	CKA 03 VS	MKA V20		
angled hoods, with pegs, side entry ¹⁾	CKA 03 VAS	MKA VA20		
with galvanized steel lever, top entry ¹⁾	CKA 03 VGS	MKA VG20		
with stainless steel lever, top entry ¹⁾	CKAX 03 VGS	MKAX VG20		
with pegs and gasket, for female inserts ²⁾			CKA 03 C	CKA 03 CS
with pegs, for male inserts ²⁾			CKA 03 CA	CKA 03 CAS
with stainless steel lever and gasket, for female inserts				CKAX 03 CX
with stainless steel lever, for male inserts				CKAX 03 CXA
gasket and screw kit for IP66/IP67/IP69 ³⁾	CKR 65		CKR 65	
gasket and screw kit for IP66/IP67/IP69 ³⁾ specific for CD 08 inserts	CKR 65 D		CKR 65 D	

¹⁾ Not suitable for CQ4 series inserts

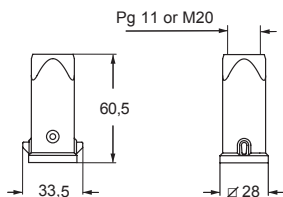
²⁾ Preferably be used with enclosures CKAX (stainless steel lever)

³⁾ To obtain the IP66/IP67/IP69 degree of protection it is necessary to replace the fixing screw supplied with all inserts, with the one with gasket included in the kit (to be purchased separately) **except for** the inserts listed below (already supplied with a fixing screw with gasket):
- CQF/M 07, CQF/M 12

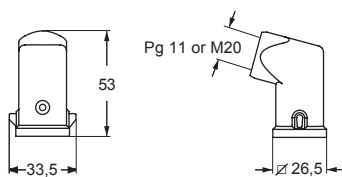
NOTE: The enclosure shown here is an example. The screw and sealing gasket kit can be used with all enclosures' part nos. in this page



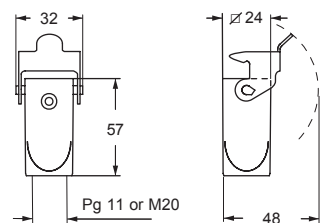
CKA VS and MKA V



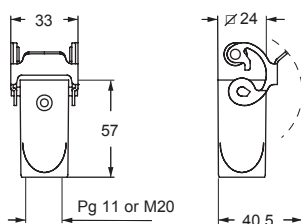
CKA VAS and MKA VA



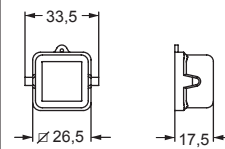
CKA VGS and MKA VG



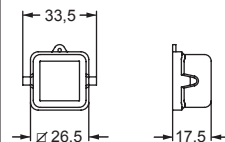
CKAX VGS and MKAX VG



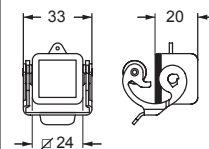
CKA C - CKA CS



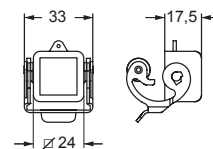
CKA CA - CKA CAS



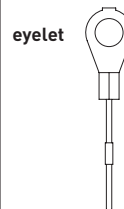
CKAX CX



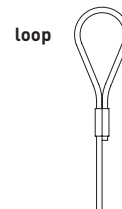
CKAX CXA



For fixing on housings



For fixing on hoods



CE **RU** **US**®
Type 12
Type 4/4X only
with CKR 65 (D)

EN 60529
IP44
IEC 60529
IP66/IP67/IP69 with CKR 65 (D) ³⁾

MKA standard metallic version

inserts		page:
CK	3 poles + ⊕	58
CK	4 poles + ⊕	58
CKS	3 poles + ⊕	-
CKS	4 poles + ⊕	-
CKSH	3 poles + ⊕	63
CKSH	4 poles + ⊕	63
CD	8 poles	67
CQ4	2 poles + ⊕	182
CQ4 H	2 poles + ⊕	183
CQ4	3 poles + ⊕	184
CQ	5 poles + ⊕	186
CQ	7 poles + ⊕	187
CQ	12 poles + ⊕	189
CQ	21 poles	190

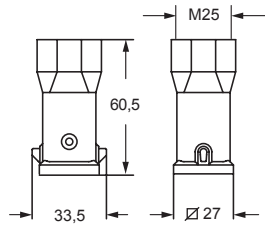
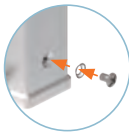
hoods



description	part No. (entry M25)
with pegs, top entry	MKA V25
gasket and screw kit for IP66/IP67/IP69 1)	CKR 65
gasket and screw kit for IP66/IP67/IP69 1) specific for CD 08 inserts	CKR 65 D

1) To obtain the IP66/IP67/IP69 degree of protection it is necessary to replace the fixing screw supplied with all inserts, with the one with gasket included in the kit (to be purchased separately) **except for** the inserts listed below (already supplied with a fixing screw with gasket):
- CQF/M 07, CQF/M 12

NOTE: The enclosure shown here is an example. The screw and sealing gasket kit can be used with all enclosures' part nos. in this page



Type 12
Type 4/4X only
with CKR 65 (D)



IP66/IP67/IP69 with CKR 65 (D) 1)

CKA - CKAX standard metallic version DESINA®

inserts	page:
CJ KF	223
CJK 8FT	226
CJK 8IFT	228
CUK 2FT	236
CUK 3FT	236
CLK 04 SC	239
CX 1/2 BD	243
CXL 2/4 SF	250
CXL 2/4 SM	250
CXL SF	250
CXL SM	250

bulkhead mounting housings cover



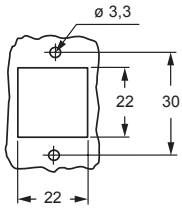
bulkhead mounting housings with SELF-CLOSING cover



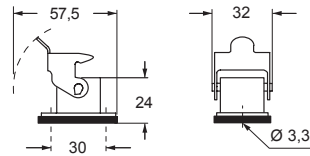
description	part No.	part No.
with galvanized steel lever	CKA 03 I	
with stainless steel lever	CKAX 03 I	
cover with pegs and glued gasket	CKAG 03 C	
with galvanized steel lever and gasket, for female inserts		CKA 03 ILS
with glued gasket on the cover		CKAX 03 ILS
with stainless steel lever and gasket, for female inserts,		
with glued gasket on the cover		

▲ suitable for DESINA® CXL inserts and CJ, CUK, CLK, CX BD adapters for male inserts without gasket

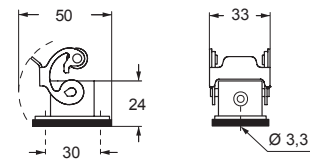
panel cut-out for enclosures



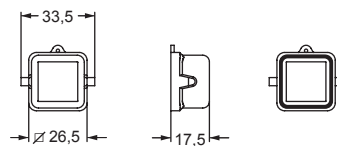
CKA I



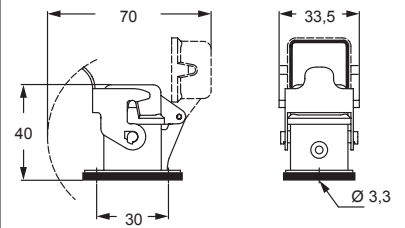
CKAX I



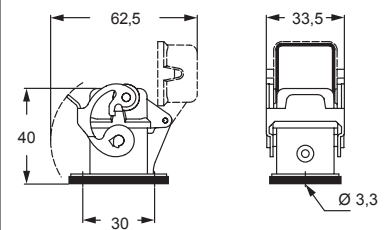
CKAG C



CKA ILS



CKAX ILS



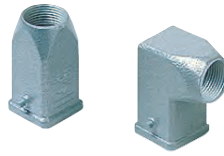
CAIUS Type 4/4X/12



inserts	page:
CJ KM	223
CJK 8MT	226
CJK 8IMT *	226, 228
CUK 2FT	236
CUK 3FT	236
CLK 04 SC *	239
CX 1/2 BD	243
CXL 2/4 PF	251
CXL 2/4 PFH	251
CXL 2/4 PM	251
CXL 2/4 PMH	251
CXL PF	251
CXL PM	251

* cannot be used with angled enclosures
(part No. CKAG 03 VA / MKAG VA20)

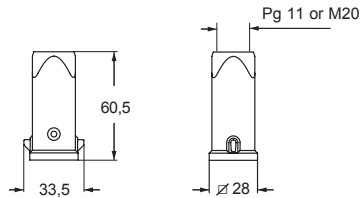
**hoods
with glued gasket**



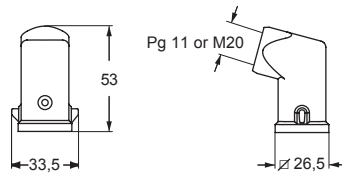
description	part No. (entry Pg 11)	part No. (entry M20)
with pegs and glued gasket, top entry	CKAG 03 V	MKAG V20
with pegs and glued gasket, side entry	CKAG 03 VA	MKAG VA20

▲ suitable for DESINA® CXL inserts and CJ, CUK, CLK, CX BD adapters for male inserts without gasket

CKAG V and MKAG V



CKAG VA and MKAG VA



Type
4/4X/12



MKAG standard metallic version with glued gasket DESINA® ▲

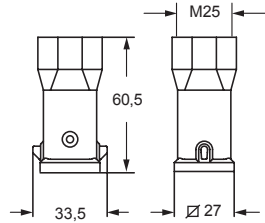
inserts	page:
CJ KM	223
CJK 8MT	226
CJK 8IMT	226, 228
CJK 8M	233
CUK 2FT	236
CUK 3FT	236
CLK 04 SC	239
CX 1/2 BD	243
CXL 2/4 PF	251
CXL 2/4 PFH	251
CXL 2/4 PM	251
CXL 2/4 PMH	251
CXL PF	251
CXL PM	251

**hoods
with glued gasket****description**part No.
(entry M25)

with pegs and glued gasket, top entry

MKAG V25

▲ suitable for DESINA® CXL inserts and CJ, CUK, CLK, CX BD adapters for male inserts without gasket



Type
4/4X/12

CKAX standard metallic version

inserts		page:
CK	3 poles + ⊕	58
CK	4 poles + ⊕	58
CKS	3 poles + ⊕	-
CKS	4 poles + ⊕	-
CKSH	3 poles + ⊕	63
CKSH	4 poles + ⊕	63
CD	8 poles	67
CQ4	2 poles + ⊕	182
CQ4 H	2 poles + ⊕	183
CQ4	3 poles + ⊕	184
CQ	5 poles + ⊕	186
CQ	7 poles + ⊕	187
CQ	12 poles + ⊕	189
CQ	21 poles	190

angled bulkhead mounting housings

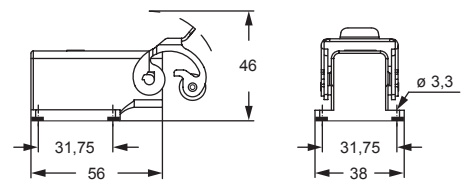


STAINLESS STEEL LEVER

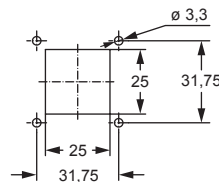
description	part No.
without cable entry, fixing by 4 screws	CKAX 03 IA4
gasket and screw kit for IP66/IP67/IP69 1)	CKR 65
gasket and screw kit for IP66/IP67/IP69 1) specific for CD 08 inserts	CKR 65 D

1) To obtain the IP66/IP67/IP69 degree of protection it is necessary to replace the fixing screw supplied with all inserts, with the one with gasket included in the kit (to be purchased separately) **except for** the inserts listed below (already supplied with a fixing screw with gasket):
 - CQF/M 07, CQF/M 12

NOTE: The enclosure shown here is an example. The screw and sealing gasket kit can be used with all enclosures' part nos. in this page



panel cut-out for enclosures



CRUS® Type 12
 Type 4/4X only
 with CKR 65 (D)



IP66/IP67/IP69 with CKR 65 (D) 1)

CKAX

CKA - CKAXX standard metallic version

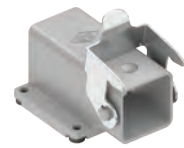
inserts		page:
CK	3 poles + ⊕	58
CK	4 poles + ⊕	58
CKS	3 poles + ⊕	-
CKS	4 poles + ⊕	-
CKSH	3 poles + ⊕	63
CKSH	4 poles + ⊕	63
CD	8 poles	67
CQ4	2 poles + ⊕	182
CQ4 H	2 poles + ⊕	183
CQ4	3 poles + ⊕	184
CQ	5 poles + ⊕	186
CQ	7 poles + ⊕	187
CQ	12 poles + ⊕	189
CQ	21 poles	190

angled bulkhead mounting housings



GALVANIZED STEEL RIGID LEVER

angled bulkhead mounting housings

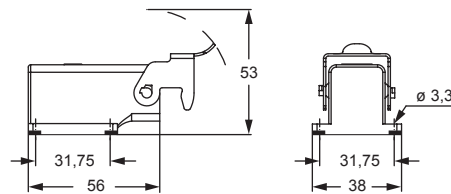
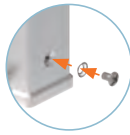


STAINLESS STEEL RIGID LEVER

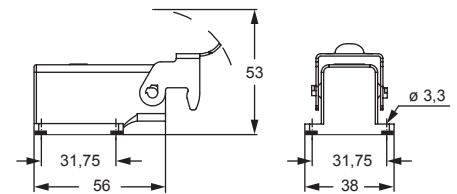
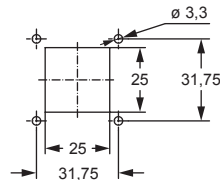
description	part No.	part No.
without cable entry, fixing by 4 screws	CKA 03 IA4	
without cable entry, fixing by 4 screws		CKAXX 03 IA4
gasket and screw kit for IP66/IP67/IP69 1)	CKR 65	CKR 65
gasket and screw kit for IP66/IP67/IP69 1) specific for CD 08 inserts	CKR 65 D	CKR 65 D

1) To obtain the IP66/IP67/IP69 degree of protection it is necessary to replace the fixing screw supplied with all inserts, with the one with gasket included in the kit (to be purchased separately) **except for** the inserts listed below (already supplied with a fixing screw with gasket):
 - CQF/M 07, CQF/M 12

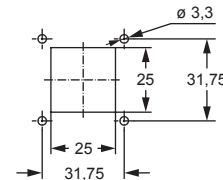
NOTE: The enclosure shown here is an example. The screw and sealing gasket kit can be used with all enclosures' part nos. in this page



panel cut-out for enclosures



panel cut-out for enclosures



CRUS® Type 12
 Type 4/4X only
 with CKR 65 (D)

IP66/IP67/IP69 with CKR 65 (D) 1)

MKAX standard metallic version

inserts		page:
CK	3 and 4 poles + ⊕	58
CKS	3 and 4 poles + ⊕	-
CKSH	3 and 4 poles + ⊕	63
CD	8 poles	67
CQ4	2 poles + ⊕	182
CQ4 H	2 poles + ⊕	183
CQ4	3 poles + ⊕	184
CQ	5 poles + ⊕	186
CQ	7 poles + ⊕	187
CQ	12 poles + ⊕	189
CQ	21 poles	190

if the counterpart has glued gasket:

CLK 04 SC	239
CX 1/2 BD	243
CXL 2/4 PF/PM	251
CXL 2/4 PFH/PMH	251
CXL PF/PM	251

angled surface mounting housings



STAINLESS STEEL LEVER

angled surface mounting housings



STAINLESS STEEL LEVER

description

part No.
(entry M25)

part No.
(entry M25)

with cable entry, fixing by 4 screws

MKAX IAP25

with cable entry, fixing by 4 screws,
bulkhead hole closed (without gasket)

MKAX AP25

gasket and screw kit
for IP66/IP67/IP69 1)

CKR 65

CKR 65

gasket and screw kit for IP66/IP67/IP69 1)
specific for CD 08 inserts

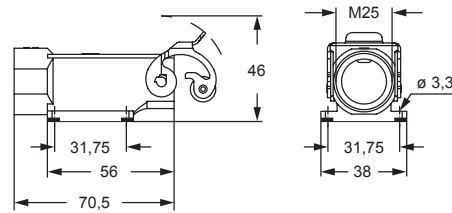
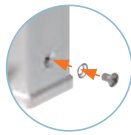
CKR 65 D

CKR 65 D

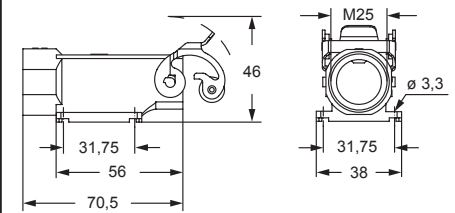
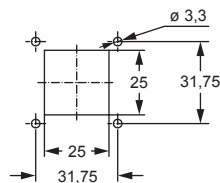
1) To obtain the IP66/IP67/IP69 degree of protection it is necessary to replace the fixing screw supplied with all inserts, with the one with gasket included in the kit (to be purchased separately) **except for** the inserts listed below (already supplied with a fixing screw with gasket):

- CQF/M 07, CQF/M 12
- CX 1/2 BDF/M
- CLK 04 SCF /SCF-H /SCM
- CXL 2/4 PF /PM /PFH /PMH, CXL PF/PM

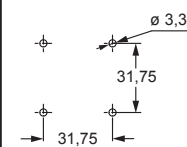
NOTE: The enclosure shown here is an example. The screw and sealing gasket kit can be used with all enclosures' part nos. in this page



panel cut-out for enclosures



panel cut-out for enclosures



Type 12
Type 4/4X only
with CKR 65 (D)



IP66/IP67/IP69 with CKR 65 (D) 1)

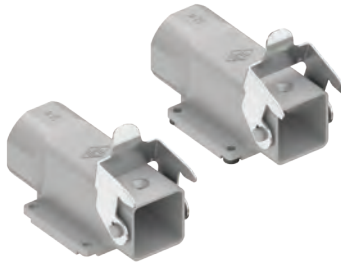
MKA - MKAXX standard metallic version

inserts		page:
CK	3 and 4 poles + ⊕	58
CKS	3 and 4 poles + ⊕	-
CKSH	3 and 4 poles + ⊕	63
CD	8 poles	67
CQ4	2 poles + ⊕	182
CQ4 H	2 poles + ⊕	183
CQ4	3 poles + ⊕	184
CQ	5 poles + ⊕	186
CQ	7 poles + ⊕	187
CQ	12 poles + ⊕	189
CQ	21 poles	190

if the counterpart has glued gasket:

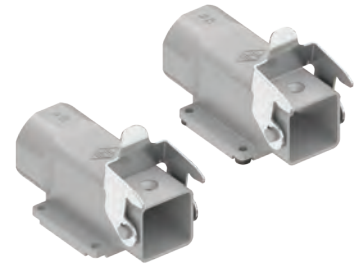
CLK 04 SC	239
CX 1/2 BD	243
CXL 2/4 PF/PM	251
CXL 2/4 PFH/PMH	251
CXL PF/PM	251

angled surface mounting housings



GALVANIZED STEEL RIGID LEVER

angled surface mounting housings



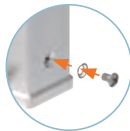
STAINLESS STEEL RIGID LEVER

description	part No. (entry M25)	part No. (entry M25)
with cable entry, fixing by 4 screws	MKA IAP25	MKAXX IAP25
with cable entry, fixing by 4 screws, bulkhead hole closed (without gasket)	MKA AP25	MKAXX AP25
with cable entry, fixing by 4 screws	CKR 65	CKR 65
with cable entry, fixing by 4 screws, bulkhead hole closed (without gasket)	CKR 65 D	CKR 65 D
gasket and screw kit for IP66/IP67/IP69 1)	CKR 65 D	CKR 65 D
gasket and screw kit for IP66/IP67/IP69 1) specific for CD 08 inserts	CKR 65 D	CKR 65 D

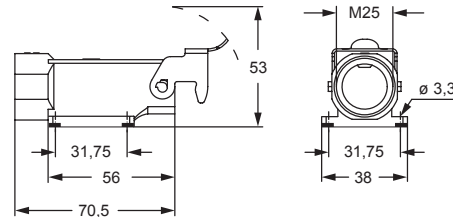
1) To obtain the IP66/IP67/IP69 degree of protection it is necessary to replace the fixing screw supplied with all inserts, with the one with gasket included in the kit (to be purchased separately) **except for** the inserts listed below (already supplied with a fixing screw with gasket):

- CQF/M 07, CQF/M 12
- CX 1/2 BDF/M
- CLK 04 SCF /SCF-H /SCM
- CXL 2/4 PF /PM /PFH /PMH, CXL PF/PM

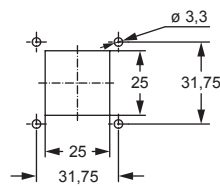
NOTE: The enclosure shown here is an example. The screw and sealing gasket kit can be used with all enclosures' part nos. in this page



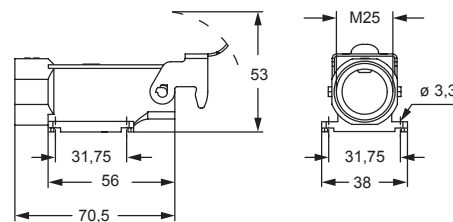
MKA IAP



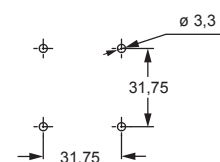
panel cut-out for enclosures



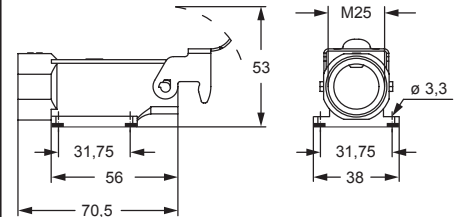
MKA AP



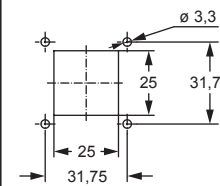
panel cut-out for enclosures



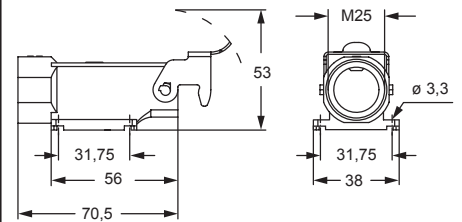
MKAXX IAP



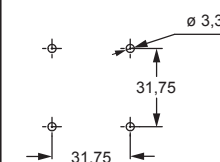
panel cut-out for enclosures



MKAXX AP



panel cut-out for enclosures



Type 12
Type 4/4X only
with CKR 65 (D)



IP66/IP67/IP69 with CKR 65 (D) 1)

MKAX standard metallic version

inserts		page:
CK	3 and 4 poles + ⊕	58
CKS	3 and 4 poles + ⊕	-
CKSH	3 and 4 poles + ⊕	63
CD	8 poles	67
CQ4	2 poles + ⊕	182
CQ4 H	2 poles + ⊕	183
CQ4	3 poles + ⊕	184
CQ	5 poles + ⊕	186
CQ	7 poles + ⊕	187
CQ	12 poles + ⊕	189
CQ	21 poles	190

if the counterpart has glued gasket:

CLK 04 SC	239
CX 1/2 BD	243
CXL 2/4 PF/PM	251
CXL 2/4 PFH/PMH	251
CXL PF/PM	251

hoods




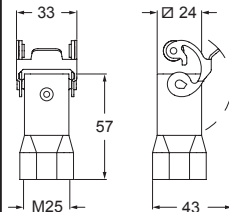
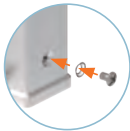
 **STAINLESS STEEL LEVER**

description	part No. (entry M25)
top entry	MKAX VG25
gasket and screw kit for IP66/IP67/IP69 1)	CKR 65
gasket and screw kit for IP66/IP67/IP69 1) specific for CD 08 inserts	CKR 65 D

1) To obtain the IP66/IP67/IP69 degree of protection it is necessary to replace the fixing screw supplied with all inserts, with the one with gasket included in the kit (to be purchased separately) **except for** the inserts listed below (already supplied with a fixing screw with gasket):

- CQF/M 07, CQF/M 12
- CX 1/2 BDF/M
- CLK 04 SCF /SCF-H /SCM
- CXL 2/4 PF /PM /PFH /PMH, CXL PF/PM

 **NOTE:** The enclosure shown here is an example. The screw and sealing gasket kit can be used with all enclosures' part nos. in this page



CRUS® Type 12
Type 4/4X only
with CKR 65 (D)



IP66/IP67/IP69 with CKR 65 (D) 1)

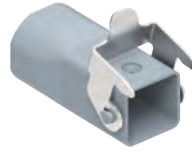
MKA - MKAXX standard metallic version

inserts		page:
CK	3 and 4 poles + ⊕	58
CKS	3 and 4 poles + ⊕	-
CKSH	3 and 4 poles + ⊕	63
CD	8 poles	67
CQ4	2 poles + ⊕	182
CQ4 H	2 poles + ⊕	183
CQ4	3 poles + ⊕	184
CQ	5 poles + ⊕	186
CQ	7 poles + ⊕	187
CQ	12 poles + ⊕	189
CQ	21 poles	190

if the counterpart has glued gasket:

CLK 04 SC	239
CX 1/2 BD	243
CXL 2/4 PF/PM	251
CXL 2/4 PFH/PMH	251
CXL PF/PM	251

hoods



GALVANIZED STEEL RIGID LEVER

hoods



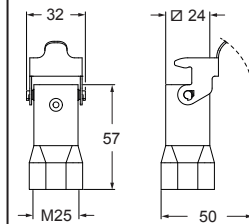
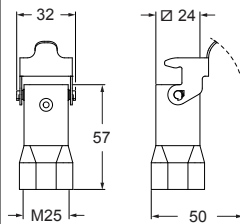
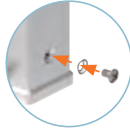
STAINLESS STEEL RIGID LEVER

description	part No. (entry M25)	part No. (entry M25)
top entry	MKA VG25	
top entry		MKAXX VG25
gasket and screw kit for IP66/IP67/IP69 1)	CKR 65	CKR 65
gasket and screw kit for IP66/IP67/IP69 1) specific for CD 08 inserts	CKR 65 D	CKR 65 D

1) To obtain the IP66/IP67/IP69 degree of protection it is necessary to replace the fixing screw supplied with all inserts, with the one with gasket included in the kit (to be purchased separately) **except for** the inserts listed below (already supplied with a fixing screw with gasket):

- CQF/M 07, CQF/M 12
- CX 1/2 BDF/M
- CLK 04 SCF /SCF-H /SCM
- CXL 2/4 PF /PM /PFH /PMH, CXL PF/PM

NOTE: The enclosure shown here is an example. The screw and sealing gasket kit can be used with all enclosures' part nos. in this page



CRUS® Type 12
Type 4/4X only
with CKR 65 (D)



IP66/IP67/IP69 with CKR 65 (D) 1)

MKAX standard metallic version

inserts		page:
CK	3 and 4 poles + ⊕	58
CKS	3 and 4 poles + ⊕	-
CKSH	3 and 4 poles + ⊕	63
CD	8 poles	67
CQ4	2 poles + ⊕	182
CQ4 H	2 poles + ⊕	183
CQ4	3 poles + ⊕	184
CQ	5 poles + ⊕	186
CQ	7 poles + ⊕	187
CQ	12 poles + ⊕	189
CQ	21 poles	190
CJ KF		223
CJK 8FT		226
CJK 8IFT		228
CLK 04 SC		239
CX 1/2 BD		243
CXL 2/4 SF/SM		250
CXL SF/SM		250
CXL 2/4 PF/PM		251
CXL 2/4 PFH/PMH		251
CXL PF/PM		251

bulkhead mounting housings



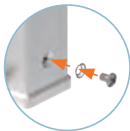
STAINLESS STEEL LEVER

description	part No. (entry M32)
M32 fixing thread ¹⁾ (*)	MKAX IF
gasket and screw kit for IP66/IP67/IP69 ¹⁾	CKR 65
gasket and screw kit for IP66/IP67/IP69 ¹⁾ specific for CD 08 inserts	CKR 65 D

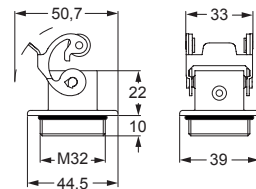
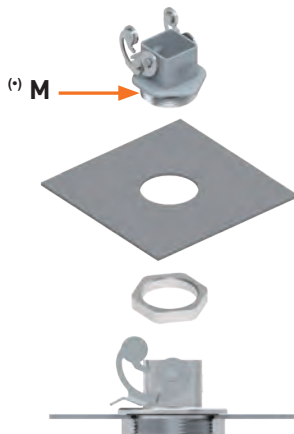
¹⁾ To obtain the IP66/IP67/IP69 degree of protection it is necessary to replace the fixing screw supplied with all inserts, with the one with gasket included in the kit (to be purchased separately) **except for** the inserts listed below (already supplied with a fixing screw with gasket):

- CQF/M 07, CQF/M 12
- CJ KF
- CJK 8FT /8IFT
- CX 1/2 BDF/M
- CLK 04 SCF /SCF-H /SCM
- CXL 2/4 PF /PM /PFH /PMH /SF /SM, CXL SF/M
- CXL PF /PM

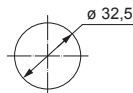
NOTE: The enclosure shown here is an example. The screw and sealing gasket kit can be used with all enclosures' part nos. in this page



^(*) Locknut supplied on request, see Cable glands catalogue (article AS M32N metallic).



panel cut-out for enclosures



CAVUS® Type 12
Type 4/4X only
with CKR 65 (D)



IP66/IP67/IP69 with CKR 65 (D) ¹⁾

MKAX

MKA - MKAXX standard metallic version

inserts		page:
CK	3 and 4 poles + ⊕	58
CKS	3 and 4 poles + ⊕	-
CKSH	3 and 4 poles + ⊕	63
CD	8 poles	67
CQ4	2 poles + ⊕	182
CQ4 H	2 poles + ⊕	183
CQ4	3 poles + ⊕	184
CQ	5 poles + ⊕	186
CQ	7 poles + ⊕	187
CQ	12 poles + ⊕	189
CQ	21 poles	190
CJ KF		223
CJK 8FT		226
CJK 8IFT		228
CLK 04 SC		239
CX 1/2 BD		243
CXL 2/4 SF/SM		250
CXL SF/SM		250
CXL 2/4 PF/PM		251
CXL 2/4 PFH/PMH		251
CXL PF/PM		251

bulkhead mounting housings



GALVANIZED STEEL RIGID LEVER

bulkhead mounting housings



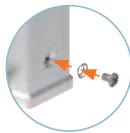
STAINLESS STEEL RIGID LEVER

description	part No. (entry M32)	part No. (entry M32)
M32 fixing thread ¹⁾ (*)	MKA IF	
M32 fixing thread ¹⁾ (*)		MKAXX IF
gasket and screw kit for IP66/IP67/IP69 ¹⁾	CKR 65	CKR 65
gasket and screw kit for IP66/IP67/IP69 ¹⁾ specific for CD 08 inserts	CKR 65 D	CKR 65 D

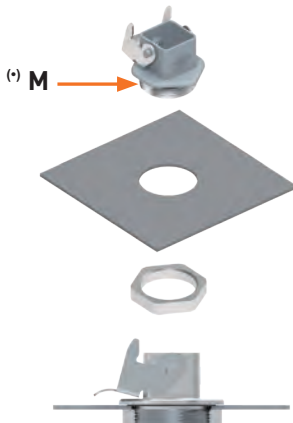
¹⁾ To obtain the IP66/IP67/IP69 degree of protection it is necessary to replace the fixing screw supplied with all inserts, with the one with gasket included in the kit (to be purchased separately) **except for** the inserts listed below (already supplied with a fixing screw with gasket):

- CQF/M 07, CQF/M 12
- CJ KF
- CJK 8FT /8IFT
- CX 1/2 BDF/M
- CLK 04 SCF /SCF-H /SCM
- CXL 2/4 PF /PM /PFH /PMH /SF /SM, CXL SF/M
- CXL PF /PM

NOTE: The enclosure shown here is an example. The screw and sealing gasket kit can be used with all enclosures' part nos. in this page



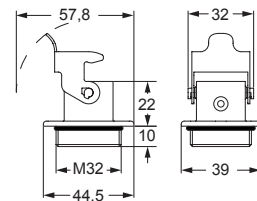
^(*) Locknut supplied on request, see Cable glands catalogue (article AS M32N metallic).



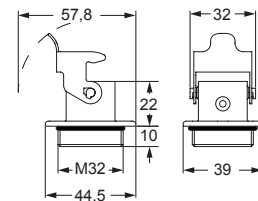
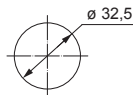
NOTE: Lever colour may vary upon specific part No.

CRUS® Type 12
Type 4/4X only
with CKR 65 (D)

IP44 IP66/IP67/IP69 with CKR 65 (D) ¹⁾



panel cut-out for enclosures



panel cut-out for enclosures

