

CNE - CNE...RY series

CNE series

CNE Series are the evolution of former series CN, one of the oldest and most successful heavy-duty multipole connection products of ILME. The evolution consisted in the complete overhauling of the connector bodies, the introduction of a **captive stainless steel protection plate for unprepared conductor strands** in the screw terminals, the adoption of galvanized steel terminal screws and the **increase of the rated voltage from former 400V to 500V**.

The ancestor series CN was intermateable with the German industry standard design with screw-type terminals, for **16A** rated current per pole and solid pins Ø 2,5 mm. The two larger sizes of this series – ILME designation “77.27” for **16 P + PE** and “104.27” for **24 P + PE** – share the dimensions of a similarly old and very popular series (series **CD** in this catalogue) dimensionally standardized by the historic standards of series **DIN 43652**, later replaced by **EN 175 301-801**. The lower sizes “44.27” for **6 P + PE** and “57.27” for **10 P + PE** were proportionally scaled down from the above mentioned larger sizes.

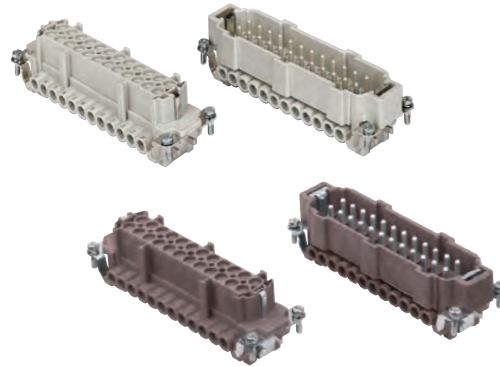
CNE connectors series come in two main variants:

- with pressure (protection) plate, **for unprepared conductors**, to preserve conductor strands from being cut from the screw head, or
- without pressure (protection) plate **[suffix X]**, for **prepared conductors** (crimped with insulated or non-insulated wire ferrule of suitable size).

Q NOTE – Prepared conductors in principle do not need any pressure (protection) plate. Use of prepared conductors is possible – although with no added value – also for CNE with pressure plate, but the highest conductor cross-sectional area 4 mm² / 12 AWG can be used only unprepared.

CNE series connection technology is **screw-type**, requiring very simple and popular tools, like a 0,8x4 mm flat blade screwdriver or a Ph0 cross-headed screwdriver (torque to apply 0,5 Nm). All connectors series CNE have their contact holder (wiring side) duly cone shaped around each terminal cavity to securely guide all stranded wires inside the terminal seat. Terminal screw are unlosably retained in their seats.

All terminals are presented completely open (unscrewed), ready to be wired, to allow spare of assembly time. The PE terminal is also screw-type (M4 screw with pressure plate, torque to apply 1,2 Nm) and is located on the mounting bracket on the pole #1 side. It covers the same conductor cross-sectional area range of the line terminals. Due to its design, the PE terminal allows two conductors per terminal (one on each side of the M4 screw); in such case it is recommended that these conductors are of the same size. Series CNE connectors are **polarized against 180° incorrect mating** by a system of keys and keyways along the contour of their mating faces.



CNE...RY variant

By partial or total replacement of the four M3 fixing screws, CNE connectors series may also use three different series of **coding and guide pins** to implement, e.g. in case of multiple identical connectors installed side by side, an “idiot-proof” system to avoid mating mismatches with counterpart.

Q NOTE – Coding may be obtained respectively by using: **CR 20 or CR 20 D single coding pins**, for up to 6 different codings, **CRF / CRM or CRF D / CRM D double coding and guide pins**, for up to 16 different codings, and the previous **double coding and guide pins plus a third element CR 72 or CR 72 D**, to allow up to 72 different coding combinations.

Connectors series CNE come in four sizes:

- size “44.27” 6 P + ⊕
- size “57.27” 10 P + ⊕
- size “77.27” 16 P + ⊕
- size “104.27” 24 P + ⊕

Two inserts – one with suffix **N** to denote special numbering, respectively CNEF/M 16 TN (or TXN) with pole numbering 17 to 32, CNEF/M 24 TN (or TXN) with numbering 25 to 48 – can be used with connector enclosures sized “77.62” or “104.62” to provide:

- size “77.62” 32 P + ⊕
- size “104.62” 48 P + ⊕

CNE...RY series for high temperatures

CNE series are available also in the **CNE...RY variant for use at high ambient temperatures up to 180 °C**.

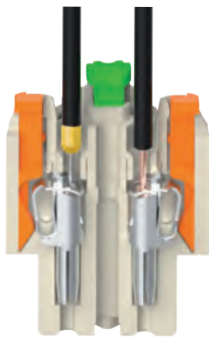
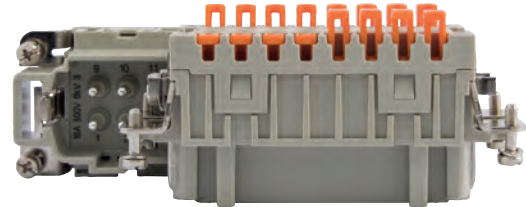
Thanks to a specific thermoplastic insulating material (whose natural colour is brown) and in combination with the dedicated connector enclosures “R-Type” for 180 °C temperature withstand, these multipole connectors are particularly suitable for installation in places in proximity of heat sources such as near ovens, moulds for thermoplastic or rubber moulding, moulds in foundries, paint booths, etc.

CSH-SQUICH® series

CSH-SQUICH® series

Spring connection with actuator button

In this view the wires are connected to the insert contacts by means of a spring terminal with actuator button.



CSH-SQUICH® INSERTS SUM-UP

- ☑ No special wire preparation (other than stripping)
- ☑ No wiring tool is necessary
- ☑ It offers an excellent fastening solution and a great resistance to strong vibrations;
- ☑ It allows solid and flexible wires with sections between 0,14 and 2,5 mm² (26-14 AWG) to be used (both with non-prepared conductors and those prepared with ferrule)
- ☑ It greatly reduces insert preparation and cabling times
- ☑ Built-in silver plated contacts

Shaped button for measuring instruments

The profile of the button used in the **SQUICH®** series inserts **allow a measuring probe to be inserted.**

This allows checks to be carried out to ensure that the wiring is correct.

Simple terminal reopening

To reopen the terminals, simply introduce the tip of a common 0,5 x 3,5 mm flat blade screwdriver in the shaped pocket on the head of the actuator, and slightly rotate the screwdriver downwards: this will lift the actuator into its open terminal position.



“Just push”
discover all the advantages
of the SQUICH® technology

CNE and CSH-SQUICH® series

TECHNICAL FEATURES

Insert series		CNE (with pressure plate) CNE...X (w/o pressure plate) CNE...RY (for high temperature)	CSH-SQUICH®
No. of poles ¹⁾	Main contacts + ⊕	6, 10, 16, 24, (32 = 2x16) (48 = 2x24)	
	auxiliary contacts	—	
Rated current ²⁾		16A	
EN IEC 61984 Pollution degree 3	rated voltage	500V	
	rated impulse voltage	6kV	
	pollution degree	3	
EN IEC 61984 Pollution degree 2	rated voltage	400/690V	
	rated impulse voltage	6kV	
	pollution degree	2	
UL / CSA certification	rated voltage (a.c./d.c.)	600V	
Contact resistance		≤ 1 mΩ	≤ 3 mΩ
Insulation resistance		≥ 10 GΩ	
Ambient temperature limit (°C)	min	-40 °C	-40 °C
	max	+125 °C / +180 °C (CNE...RY)	+125 °C
Degree of protection	with enclosures (according to type)	IP65, IP66/IP69, IP66/IP67/IP69, IP66/IP68/IP69	
	without enclosures (in mated condition) - termination side on male and female inserts - mating side on female inserts	IP20 (IPXXB)	
Conductor connections		screw type	spring and clamp with actuator button
Conductor cross-sectional area	mm ²	0,5 - 4 (CNE)	0,14 - 2,5
		0,25 - 2,5 (CNE...X)	
	AWG	20 - 12 (CNE) 24 - 14 (CNE...X)	26 - 14
Mechanical endurance (mating cycles)		≥ 500	

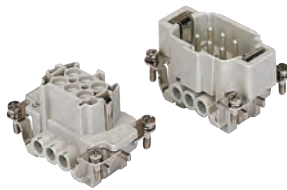
1) Polarities shown in brackets may be obtained by using two inserts in their own double-sized housings

2) Please check the inserts derating diagrams to establish the actual maximum operating current according to the ambient temperature, the conductor cross-sectional area, the polarity of the connector, and any external constraint may derive e.g. by the continuous operating temperature sustained by the chosen conductor sheathing or by end-product safety standards fixing max allowed temperature rise on terminals (e.g. 30 K, 45 K or 50 K)

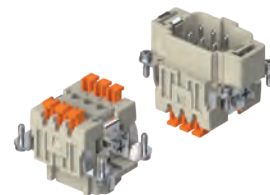
CNE CSH-SQUICH® 6 poles + ⊕ 16A - 500V

enclosures: size "44.27"	page:
C-TYPE IP65 or IP66/IP69	387 - 392
C7 IP67, single lever	436 - 437
V-TYPE IP65 or IP66/IP69, single lever	444 - 447
BIG hoods	466 - 467
T-TYPE IP65 insulating	480 - 481
T-TYPE / W IP66/IP69 insulating	489
HYGIENIC T-TYPE / H IP66/IP69	501
HYGIENIC T-TYPE / C IP66/IP69, -50 °C	506
W-TYPE for aggressive environments	521
E-Xtreme® corrosion proof	530 - 531, 542, 550 - 551
EMC	578
Central lever	603 - 605
LS-TYPE	618 - 619
IP68	632 - 635
panel supports: COB	page: 652 - 653

inserts, screw terminal connections

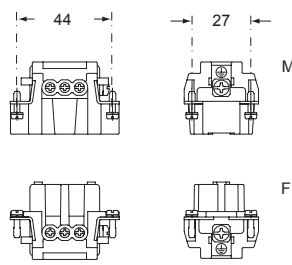
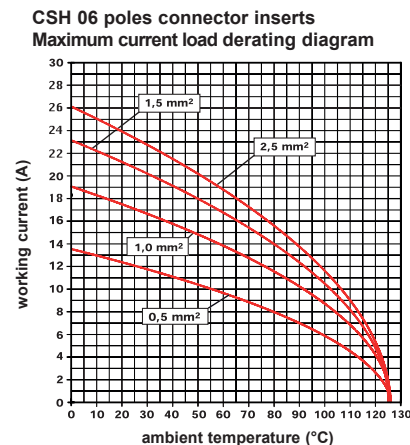
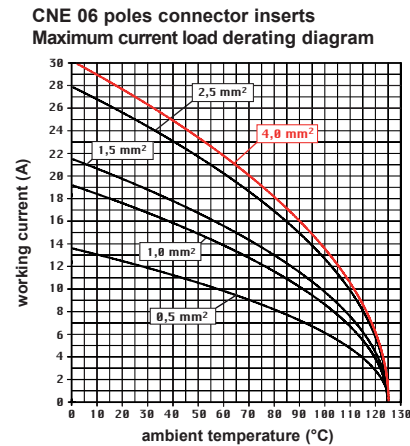


inserts, spring terminal connections without tools

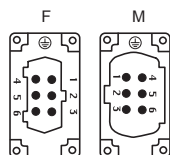


description	part No.	part No.
indirect, with plate ¹⁾ female inserts with female contacts male inserts with male contacts	CNEF 06 T CNEM 06 T	
direct, without plate ²⁾ female inserts with female contacts male inserts with male contacts	CNEF 06 TX CNEM 06 TX	
spring terminals with actuator button female inserts with female contacts male inserts with male contacts		CSHF 06 CSHM 06

- characteristics according to EN 61984:
16A 500V 6kV 3
16A 400/690V 6kV 2
- (UL for USA and Canada), certified
- rated voltage according to UL/CSA: 600V
- insulation resistance: ≥ 10 GΩ
- ambient temperature limit: -40 °C ... +125 °C
- made of self-extinguishing thermoplastic resin UL 94V-0
- mechanical life: ≥ 500 cycles
- contact resistance: ≤ 1 mΩ (CNE) - ≤ 3 mΩ (CSH)
- for max. current load see the connector inserts derating diagrams below; for more information see page 28



contacts side (front view)

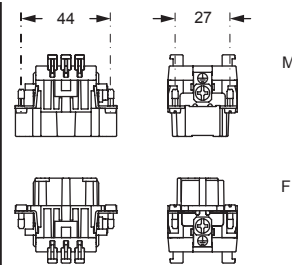


- inserts with plate for section conductors:
0,5 - 4 mm² - AWG 20 - 12
- inserts without plate for section conductors:
0,25 - 2,5 mm² - AWG 24 - 14
- conductors stripping length: 7 mm
- terminal screw torque: 0,5 Nm (4.4 lb.in), for more information see page 20 and 21

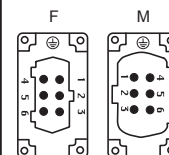
¹⁾ for unprepared conductors



²⁾ for conductors with end sleeve ferrule

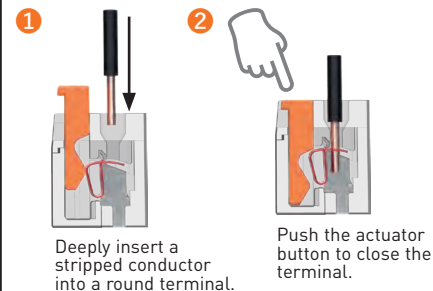


contacts side (front view)

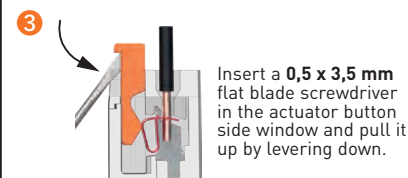


- inserts for conductors with the following sections:
0,14 - 2,5 mm² - AWG 26 - 14
- conductors stripping length: 9...11 mm

SQUICH®-spring connection technology WIRING



RE-OPENING

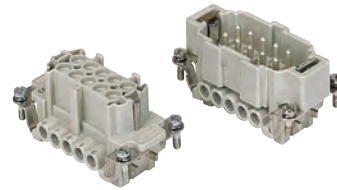


CNE CSH-SQUICH®

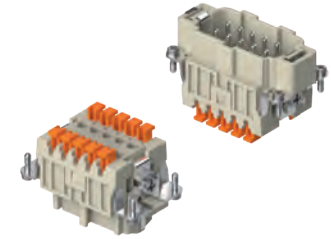
CNE CSH-SQUICH® 10 poles + ⊕ 16A - 500V

enclosures: size "57.27"	page:
C-TYPE IP65 or IP66/IP69	393 - 401
C7 IP67, two levers	438
V-TYPE IP65 or IP66/IP69, single lever	448 - 453
BIG hoods	468 - 469
T-TYPE IP65 insulating	482 - 483
T-TYPE / W IP66/IP69 insulating	490
HYGIENIC T-TYPE / H IP66/IP69	502
HYGIENIC T-TYPE / C IP66/IP69, -50 °C	507
W-TYPE for aggressive environments	522
E-Xtreme® corrosion proof	532 - 533, 543, 552 - 553
EMC	579
Central lever	606 - 608
LS-TYPE	620 - 621
IP68	636 - 639
panel supports: COB	page: 652 - 653

inserts, screw terminal connections

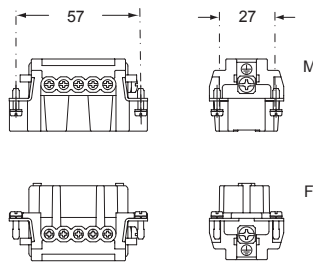


inserts, spring terminal connections without tools

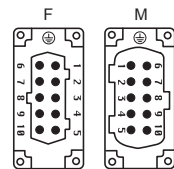


description	part No.	part No.
indirect, with plate ¹⁾ female inserts with female contacts male inserts with male contacts	CNEF 10 T CNEM 10 T	
direct, without plate ²⁾ female inserts with female contacts male inserts with male contacts	CNEF 10 TX CNEM 10 TX	
spring terminals with actuator button female inserts with female contacts male inserts with male contacts		CSHF 10 CSHM 10

- characteristics according to EN 61984:
16A 500V 6kV 3
16A 400/690V 6kV 2
- (UL for USA and Canada), certified
- rated voltage according to UL/CSA: 600V
- insulation resistance: ≥ 10 GΩ
- ambient temperature limit: -40 °C ... +125 °C
- made of self-extinguishing thermoplastic resin UL 94V-0
- mechanical life: ≥ 500 cycles
- contact resistance: ≤ 1 mΩ (CNE) - ≤ 3 mΩ (CSH)
- for max. current load see the connector inserts derating diagrams below; for more information see page 28



contacts side (front view)

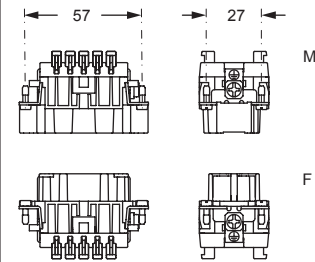


- inserts with plate for section conductors:
0,5 - 4 mm² - AWG 20 - 12
- inserts without plate for section conductors:
0,25 - 2,5 mm² - AWG 24 - 14
- conductors stripping length: 7 mm
- terminal screw torque: 0,5 Nm (4.4 lb.in), for more information see page 20 and 21

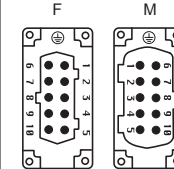
¹⁾ for unprepared conductors



²⁾ for conductors with end sleeve ferrule

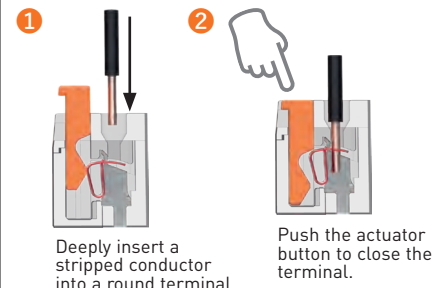


contacts side (front view)

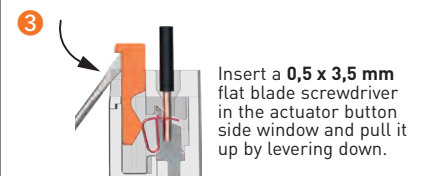


- inserts for conductors with the following sections:
0,14 - 2,5 mm² - AWG 26 - 14
- conductors stripping length: 9...11 mm

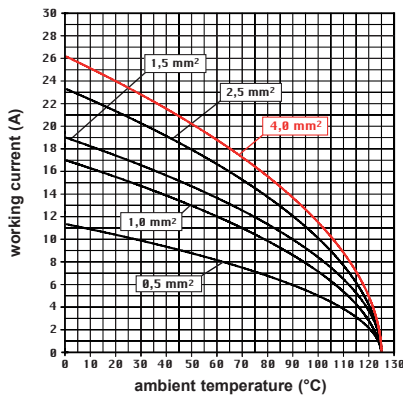
SQUICH®-spring connection technology WIRING



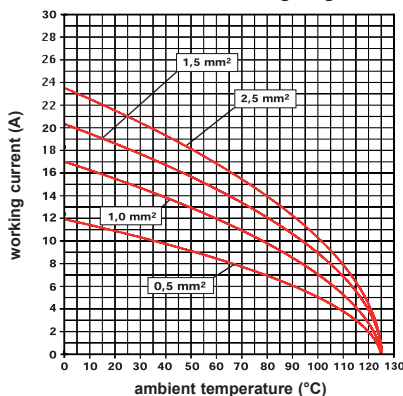
RE-OPENING



CNE 10 poles connector inserts Maximum current load derating diagram



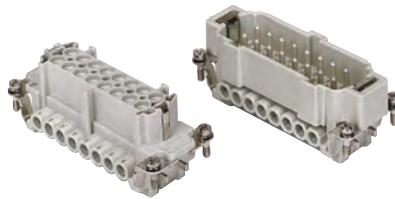
CSH 10 poles connector inserts Maximum current load derating diagram



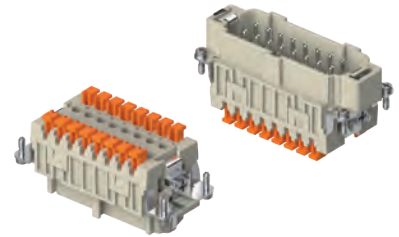
CNE CSH-SQUICH® 16 poles + ⊕ 16A - 500V

enclosures: size "77.27"	page:
C-TYPE IP65 or IP66/IP69	402 - 411
C7 IP67, two levers	439 - 440
V-TYPE IP65 or IP66/IP69, single lever	454 - 458
BIG hoods	470 - 471
T-TYPE IP65 insulating	484 - 485
T-TYPE / W IP66/IP69 insulating	491
HYGIENIC T-TYPE / H IP66/IP69	503
HYGIENIC T-TYPE / C IP66/IP69, -50 °C	508
W-TYPE for aggressive environments	523
E-Xtreme® corrosion proof	534 - 535, 544, 554 - 555
EMC	580
Central lever	609 - 611
LS-TYPE	622 - 623
IP68	640 - 643
panel supports: COB	page: 652 - 653

inserts, screw terminal connections

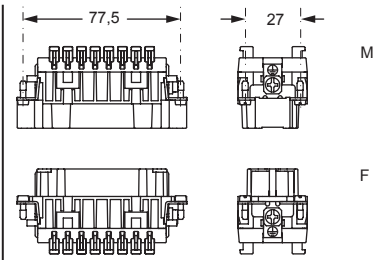
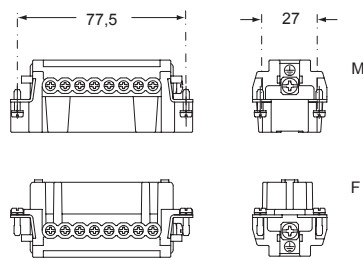


inserts, spring terminal connections without tools

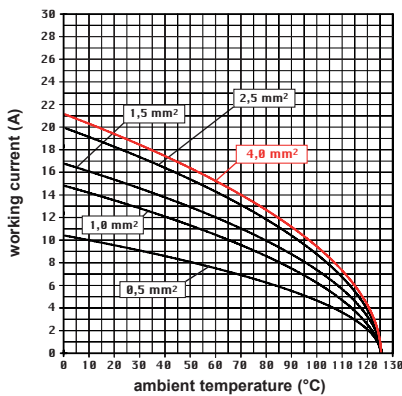


description	part No.	part No.
indirect, with plate ¹⁾ female inserts with female contacts male inserts with male contacts	CNEF 16 T CNEM 16 T	
direct, without plate ²⁾ female inserts with female contacts male inserts with male contacts	CNEF 16 TX CNEM 16 TX	
spring terminals with actuator button female inserts with female contacts male inserts with male contacts		CSHF 16 CSHM 16

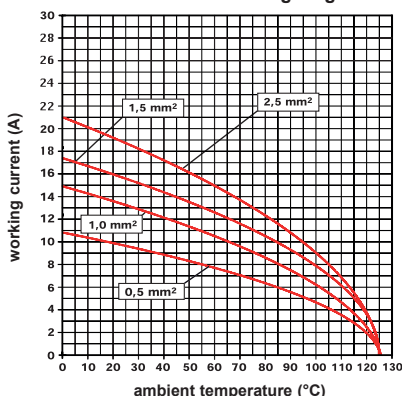
- characteristics according to EN 61984:
16A 500V 6kV 3
16A 400/690V 6kV 2
- (UL for USA and Canada),
- certified
- rated voltage according to UL/CSA: 600V
- insulation resistance: ≥ 10 GΩ
- ambient temperature limit: -40 °C ... +125 °C
- made of self-extinguishing thermoplastic resin UL 94V-0
- mechanical life: ≥ 500 cycles
- contact resistance: ≤ 1 mΩ (CNE) - ≤ 3 mΩ (CSH)
- for max. current load see the connector inserts derating diagrams below; for more information see page 28



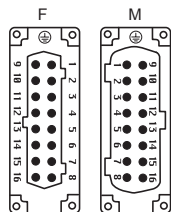
CNE 16 poles connector inserts
Maximum current load derating diagram



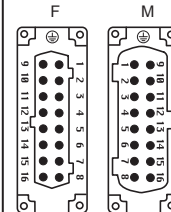
CSH 16 poles connector inserts
Maximum current load derating diagram



contacts side (front view)



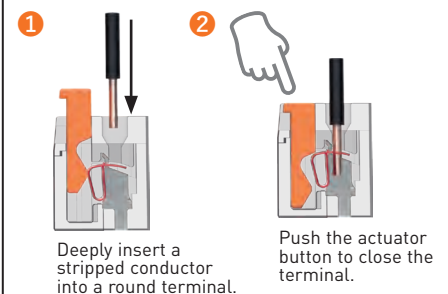
contacts side (front view)



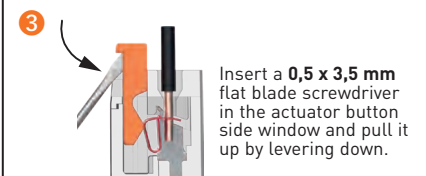
- inserts with plate for section conductors:
0,5 - 4 mm² - AWG 20 - 12
- inserts without plate for section conductors:
0,25 - 2,5 mm² - AWG 24 - 14
- conductors stripping length: 7 mm
- terminal screw torque: 0,5 Nm (4.4 lb.in), for more information see page 20 and 21

- inserts for conductors with the following sections:
0,14 - 2,5 mm² - AWG 26 - 14
- conductors stripping length: 9...11 mm

SQUICH®-spring connection technology WIRING



RE-OPENING



¹⁾ for unprepared conductors



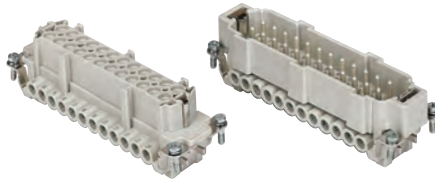
²⁾ for conductors with end sleeve ferrule



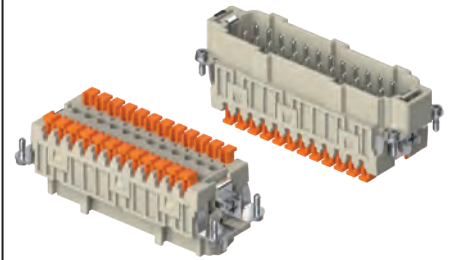
CNE CSH-SQUICH® 24 poles + ⊕ 16A - 500V

enclosures: size "104.27"	page:
C-TYPE IP65 or IP66/IP69	412 - 423
C7 IP67, two levers	441 - 442
V-TYPE IP65 or IP66/IP69, single lever	459 - 463
BIG hoods	472 - 473
T-TYPE IP65 insulating	486 - 487
T-TYPE / W IP66/IP69 insulating	492
HYGIENIC T-TYPE / H IP66/IP69	504
HYGIENIC T-TYPE / C IP66/IP69, -50 °C	509
W-TYPE for aggressive environments	524
E-Xtreme® corrosion proof	536 - 537, 545, 556 - 557
EMC	581
Central lever	612 - 614
LS-TYPE	624 - 625
IP68	644 - 647
panel supports: COB	page: 652 - 653

inserts, screw terminal connections

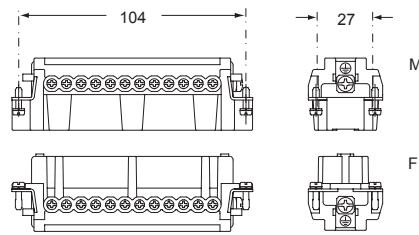


inserts, spring terminal connections without tools

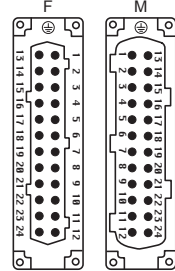


description	part No.	part No.
indirect, with plate ¹⁾ female inserts with female contacts male inserts with male contacts	CNEF 24 T CNEM 24 T	
direct, without plate ²⁾ female inserts with female contacts male inserts with male contacts	CNEF 24 TX CNEM 24 TX	
spring terminals with actuator button female inserts with female contacts male inserts with male contacts		CSHF 24 CSHM 24

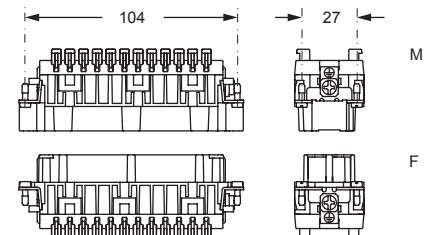
- characteristics according to EN 61984:
16A 500V 6kV 3
16A 400/690V 6kV 2
- (UL for USA and Canada), certified
- rated voltage according to UL/CSA: 600V
- insulation resistance: ≥ 10 GΩ
- ambient temperature limit: -40 °C ... +125 °C
- made of self-extinguishing thermoplastic resin UL 94V-0
- mechanical life: ≥ 500 cycles
- contact resistance: ≤ 1 mΩ (CNE) - ≤ 3 mΩ (CSH)
- for max. current load see the connector inserts derating diagrams below; for more information see page 28



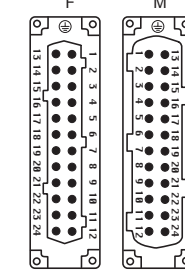
contacts side (front view)



- inserts with plate for section conductors:
0,5 - 4 mm² - AWG 20 - 12
- inserts without plate for section conductors:
0,25 - 2,5 mm² - AWG 24 - 14
- conductors stripping length: 7 mm
- terminal screw torque: 0,5 Nm (4.4 lb.in.), for more information see page 20 and 21



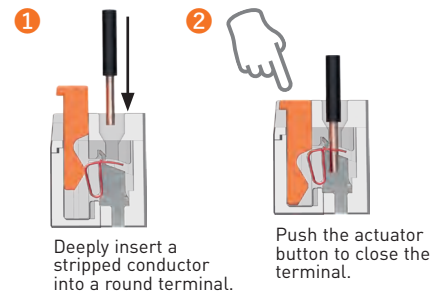
contacts side (front view)



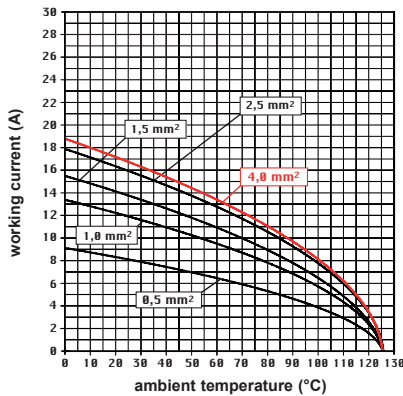
- inserts for conductors with the following sections:
0,14 - 2,5 mm² - AWG 26 - 14
- conductors stripping length: 9...11 mm

SQUICH®-spring connection technology

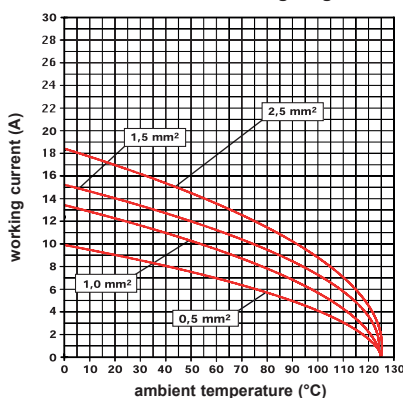
WIRING



CNE 24 poles connector inserts Maximum current load derating diagram



CSH 24 poles connector inserts Maximum current load derating diagram



¹⁾ for unprepared conductors



²⁾ for conductors with end sleeve ferrule



CNE CSH-SQUICH® 32 poles + ⊕ 16A - 500V

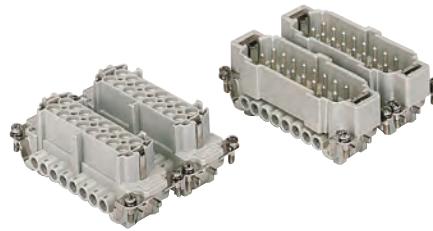
enclosures:
size "77.62"

page:

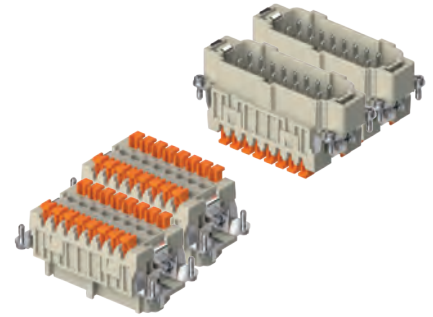
C-TYPE IP65 or IP66/IP69
W-TYPE for aggressive environments
E-Xtreme® corrosion proof

424 - 429
525
546

inserts,
screw terminal connections



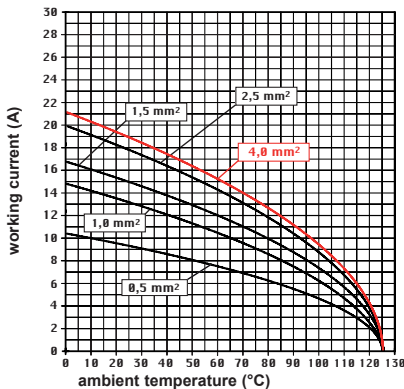
inserts,
spring terminal connections without tools



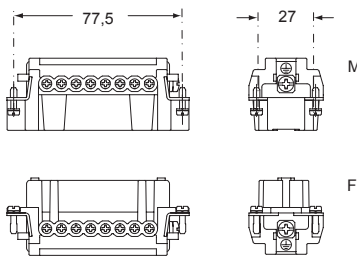
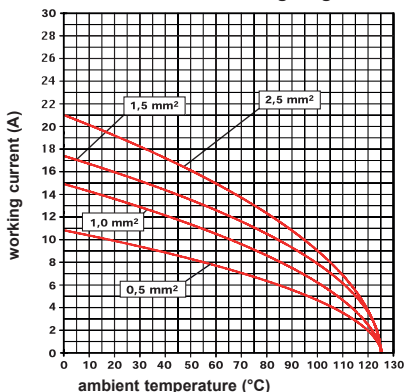
description	part No.	part No.	part No.	part No.
indirect, with plate ¹⁾ female inserts, No. (1-16) and (17-32) male inserts, No. (1-16) and (17-32)	CNEF 16 T CNEM 16 T	CNEF 16 TN CNEM 16 TN		
direct, without plate ²⁾ female inserts, No. (1-16) and (17-32) male inserts, No. (1-16) and (17-32)	CNEF 16 TX CNEM 16 TX	CNEF 16 TXN CNEM 16 TXN		
spring terminals with actuator button female inserts with female contacts, No. (1-16) and (17-32) male inserts with male contacts, No. (1-16) and (17-32)			CSHF 16 CSHM 16	CSHF 16 N CSHM 16 N

- characteristics according to EN 61984:
16A 500V 6kV 3
16A 400/690V 6kV 2
- (UL for USA and Canada), certified
- rated voltage according to UL/CSA: 600V
- insulation resistance: ≥ 10 GΩ
- ambient temperature limit: -40 °C ... +125 °C
- made of self-extinguishing thermoplastic resin UL 94V-0
- mechanical life: ≥ 500 cycles
- contact resistance: ≤ 1 mΩ (CNE) - ≤ 3 mΩ (CSH)
- for max. current load see the connector inserts derating diagrams below; for more information see page 28

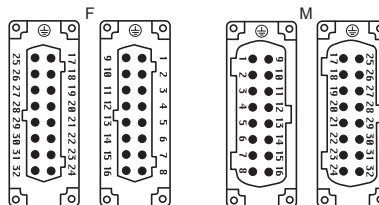
CNE 32 poles connector inserts
Maximum current load derating diagram



CSH 32 poles connector inserts
Maximum current load derating diagram



contacts side (front view)

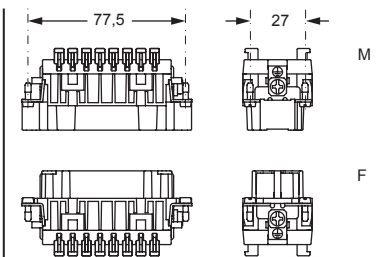


- inserts with plate for section conductors:
0,5 - 4 mm² - AWG 20 - 12
- inserts without plate for section conductors:
0,25 - 2,5 mm² - AWG 24 - 14
- conductors stripping length: 7 mm
- terminal screw torque: 0,5 Nm (4.4 lb.in), for more information see page 20 and 21

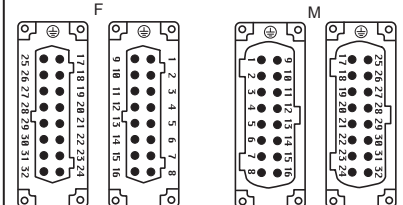
¹⁾ for unprepared conductors



²⁾ for conductors with end sleeve ferrule

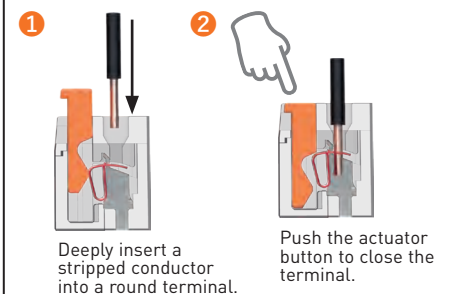


contacts side (front view)

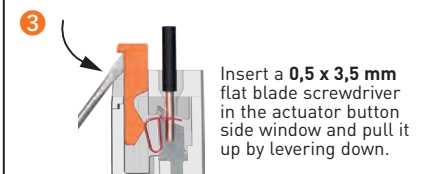


- inserts for conductors with the following sections:
0,14 - 2,5 mm² - AWG 26 - 14
- conductors stripping length: 9...11 mm

SQUICH®-spring connection technology
WIRING



RE-OPENING



CNE CSH-SQUICH® 48 poles + ⊕ 16A - 500V

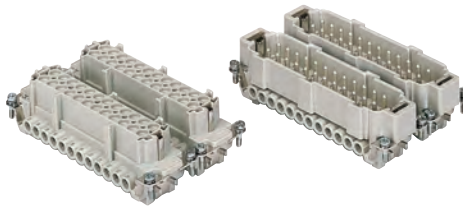
enclosures:
size "104.62"

page:

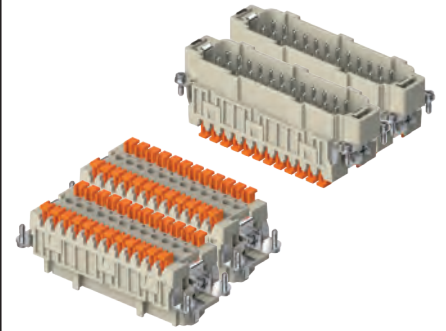
C-TYPE IP65 or IP66/IP69
W-TYPE for aggressive environments
E-Xtreme® corrosion proof

430
526
547

inserts,
screw terminal connections

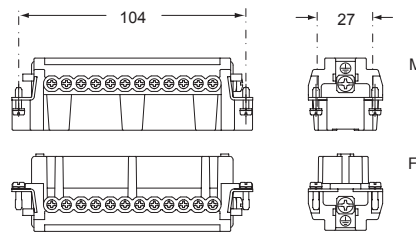


inserts,
spring terminal connections without tools

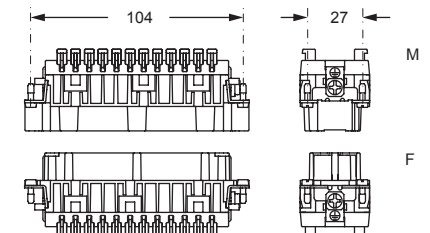
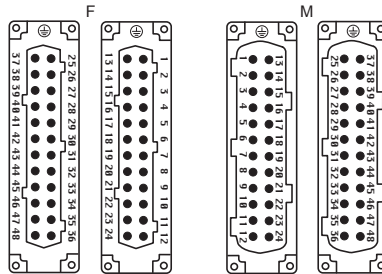


description	part No.	part No.	part No.	part No.
indirect, with plate ¹⁾ female inserts, No. (1-24) and (25-48) male inserts, No. (1-24) and (25-48)	CNEF 24 T CNEM 24 T	CNEF 24 TN CNEM 24 TN		
direct, without plate ²⁾ female inserts, No. (1-24) and (25-48) male inserts, No. (1-24) and (25-48)	CNEF 24 TX CNEM 24 TX	CNEF 24 TXN CNEM 24 TXN		
spring terminals with actuator button female inserts with female contacts, No. (1-24) and (25-48) male inserts with male contacts, No. (1-24) and (25-48)			CSHF 24 CSHM 24	CSHF 24 N CSHM 24 N

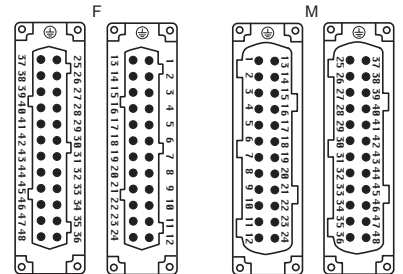
- characteristics according to EN 61984:
16A 500V 6kV 3
16A 400/690V 6kV 2
- cULus (UL for USA and Canada),
- certified
- rated voltage according to UL/CSA: 600V
- insulation resistance: ≥ 10 GΩ
- ambient temperature limit: -40 °C ... +125 °C
- made of self-extinguishing thermoplastic resin UL 94V-0
- mechanical life: ≥ 500 cycles
- contact resistance: ≤ 1 mΩ (CNE) - ≤ 3 mΩ (CSH)
- for max. current load see the connector inserts derating diagrams below; for more information see page 28



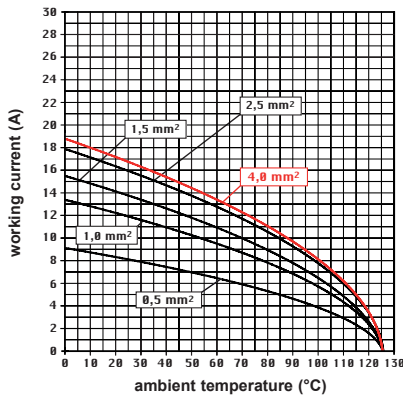
contacts side (front view)



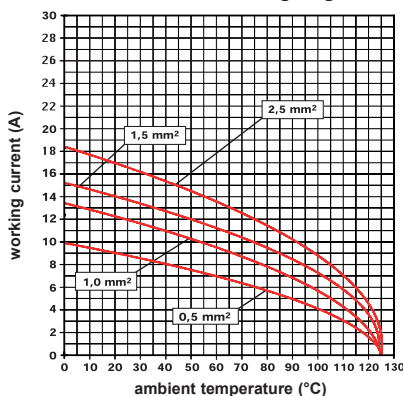
contacts side (front view)



CNE 48 poles connector inserts Maximum current load derating diagram



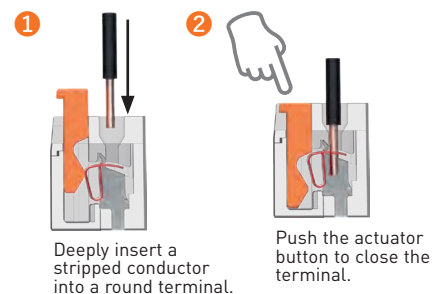
CSH 48 poles connector inserts Maximum current load derating diagram



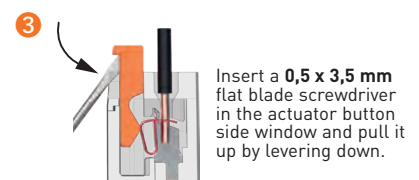
- inserts with plate for section conductors:
0,5 - 4 mm² - AWG 20 - 12
- inserts without plate for section conductors:
0,25 - 2,5 mm² - AWG 24 - 14
- conductors stripping length: 7 mm
- terminal screw torque: 0,5 Nm (4.4 lb.in), for more information see page 20 and 21

- inserts for conductors with the following sections:
0,14 - 2,5 mm² - AWG 26 - 14
- conductors stripping length: 9...11 mm

SQUICH®-spring connection technology WIRING



RE-OPENING



¹⁾ for unprepared conductors



²⁾ for conductors with end sleeve ferrule



CNE...RY 6 poles + ⊕ 16A - 500V

enclosures:
size "44.27"
for 180 °C

page:
586

inserts,
screw terminal connections



180 °C

description

part No.

indirect, with plate ¹⁾, use in up to 180 °C
female inserts with female contacts, brown
male inserts with male contacts, brown

CNEF 06 RY
CNEM 06 RY

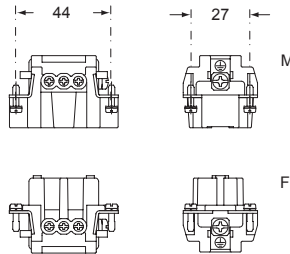
- characteristics according to EN 61984:

16A 500V 6kV 3
16A 400/690V 6kV 2

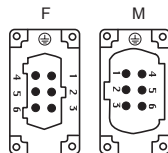
- (UL for USA and Canada),

ERIC certified

- rated voltage according to UL/CSA: 600V
- insulation resistance: $\geq 10 \text{ G}\Omega$
- ambient temperature limit: $-40 \text{ }^\circ\text{C} \dots +180 \text{ }^\circ\text{C}$
- made of self-extinguishing thermoplastic resin UL 94V-0
- mechanical life: ≥ 500 cycles
- contact resistance: $\leq 1 \text{ m}\Omega$
- for max. current load see the connector inserts derating diagram below; for more information see page 28

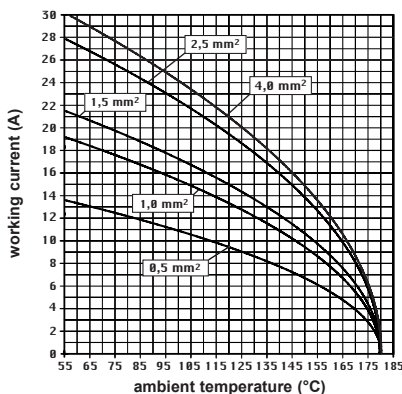


contacts side (front view)



- inserts with plate for section conductors:
0,5 - 4 mm² - AWG 20 - 12
- conductors stripping length: 7 mm
- terminal screw torque: 0,5 Nm (4,4 lb.in), for more information see page 20 and 21

CNE...RY 06 poles connector inserts
Maximum current load derating diagram



¹⁾ for unprepared conductors

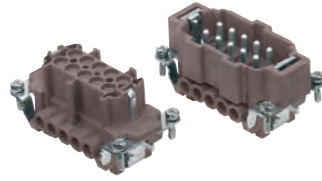


CNE...RY 10 poles + ⊕ 16A - 500V

enclosures:
size "57.27"
for 180 °C

page:
587

inserts,
screw terminal connections



180 °C

description

part No.

indirect, with plate ¹⁾, use in up to 180 °C
female inserts with female contacts, brown
male inserts with male contacts, brown

CNEF 10 RY
CNEM 10 RY

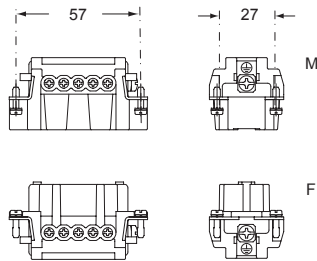
- characteristics according to EN 61984:

16A 500V 6kV 3
16A 400/690V 6kV 2

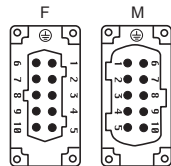
- cULus (UL for USA and Canada), SB, CEC, DNV-GL

BUREAU VERITAS EAC certified

- rated voltage according to UL/CSA: 600V
- insulation resistance: ≥ 10 GΩ
- ambient temperature limit: -40 °C ... +180 °C
- made of self-extinguishing thermoplastic resin UL 94V-0
- mechanical life: ≥ 500 cycles
- contact resistance: ≤ 1 mΩ
- for max. current load see the connector inserts derating diagram below; for more information see page 28

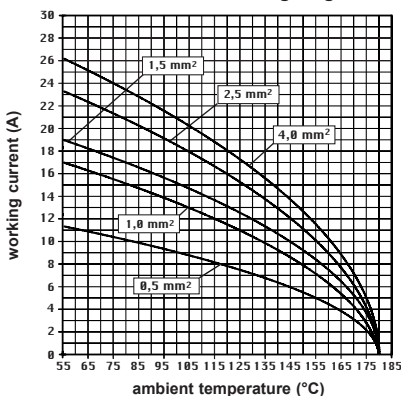


contacts side (front view)



- inserts with plate for section conductors:
0,5 - 4 mm² - AWG 20 - 12
- conductors stripping length: 7 mm
- terminal screw torque: 0,5 Nm (4,4 lb.in), for more information see page 20 and 21

CNE...RY 10 poles connector inserts
Maximum current load derating diagram



¹⁾ for unprepared conductors

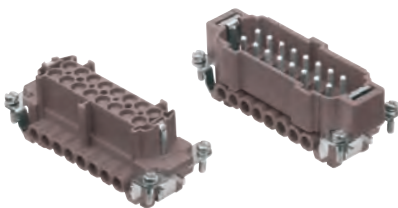


CNE...RY 16 poles + ⊕ 16A - 500V

enclosures:
size "77.27"
for 180 °C

page:
588

inserts,
screw terminal connections



180 °C

description

part No.

indirect, with plate ¹⁾, use in up to 180 °C
female inserts with female contacts, brown
male inserts with male contacts, brown

CNEF 16 RY
CNEM 16 RY

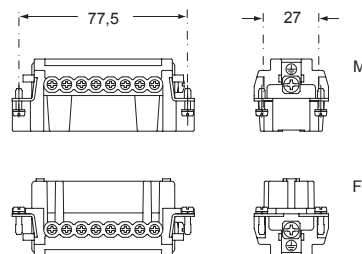
- characteristics according to EN 61984:

16A 500V 6kV 3
16A 400/690V 6kV 2

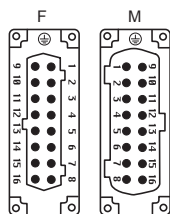
- cULus (UL for USA and Canada),

certified

- rated voltage according to UL/CSA: 600V
- insulation resistance: ≥ 10 GΩ
- ambient temperature limit: -40 °C ... +180 °C
- made of self-extinguishing thermoplastic resin UL 94V-0
- mechanical life: ≥ 500 cycles
- contact resistance: ≤ 1 mΩ
- for max. current load see the connector inserts derating diagram below; for more information see page 28



contacts side (front view)

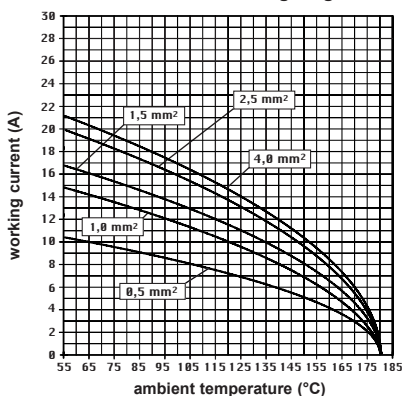


- inserts with plate for section conductors:
0,5 - 4 mm² - AWG 20 - 12
- conductors stripping length: 7 mm
- terminal screw torque: 0,5 Nm (4,4 lb.in), for more information see page 20 and 21

¹⁾ for unprepared conductors



CNE...RY 16 poles connector inserts
Maximum current load derating diagram

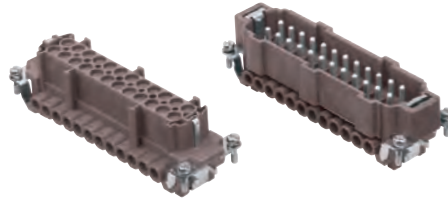


CNE...RY 24 poles + ⊕ 16A - 500V

enclosures:
size "104.27"
for 180 °C

page:
589

inserts,
screw terminal connections



180 °C

description

part No.

indirect, with plate ¹⁾, use in up to 180 °C
female inserts with female contacts, brown
male inserts with male contacts, brown

CNEF 24 RY
CNEM 24 RY

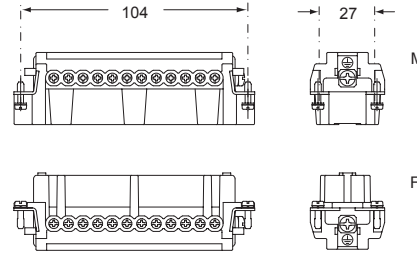
- characteristics according to EN 61984:

16A 500V 6kV 3
16A 400/690V 6kV 2

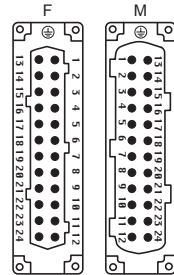
- cULus (UL for USA and Canada),

certified

- rated voltage according to UL/CSA: 600V
- insulation resistance: $\geq 10 \text{ G}\Omega$
- ambient temperature limit: -40 °C ... +180 °C
- made of self-extinguishing thermoplastic resin UL 94V-0
- mechanical life: ≥ 500 cycles
- contact resistance: $\leq 1 \text{ m}\Omega$
- for max. current load see the connector inserts derating diagram below; for more information see page 28



contacts side (front view)

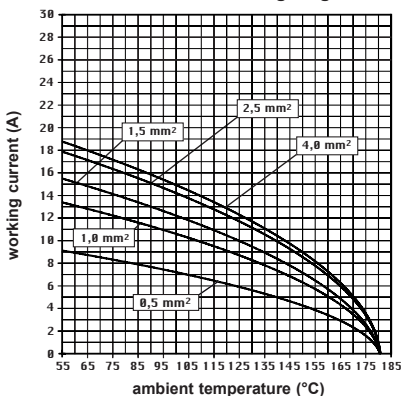


- inserts with plate for section conductors:
0,5 - 4 mm² - AWG 20 - 12
- conductors stripping length: 7 mm
- terminal screw torque: 0,5 Nm (4,4 lb.in), for more information see page 20 and 21

¹⁾ for unprepared conductors



CNE...RY 24 poles connector inserts
Maximum current load derating diagram



CNE...RY 48 poles + ⊕ 16A - 500V

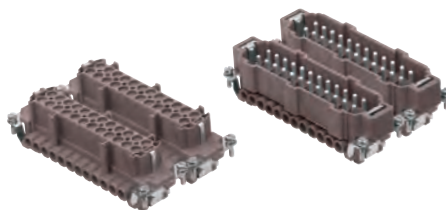
enclosures:
size "104.62"

page:

for 180 °C

590

inserts,
screw terminal connections



180 °C

description

part No.

part No.

indirect, with plate ¹⁾, use in up to 180 °C
female inserts, No. (1-24) and (25-48), brown
male inserts, No. (1-24) and (25-48), brown

CNEF 24 RY
CNEM 24 RY

CNEF 24 RYN
CNEM 24 RYN

- characteristics according to EN 61984:

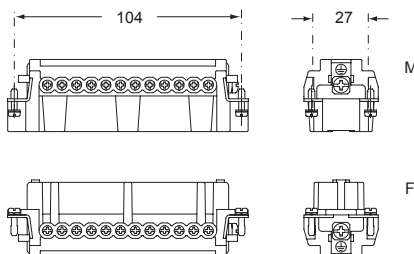
16A 500V 6kV 3

16A 400/690V 6kV 2

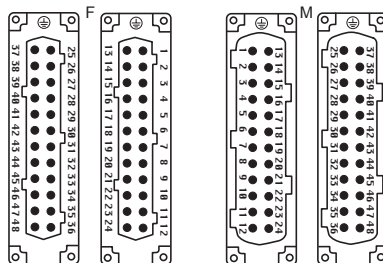
- cULus (UL for USA and Canada),

certified

- rated voltage according to UL/CSA: 600V
- insulation resistance: $\geq 10 \text{ G}\Omega$
- ambient temperature limit: -40 °C ... +180 °C
- made of self-extinguishing thermoplastic resin UL 94V-0
- mechanical life: ≥ 500 cycles
- contact resistance: $\leq 1 \text{ m}\Omega$
- for max. current load see the connector inserts derating diagram below; for more information see page 28

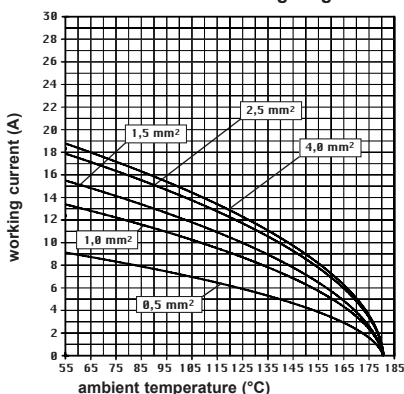


contacts side (front view)



- inserts with plate for section conductors: 0,5 - 4 mm² - AWG 20 - 12
- conductors stripping length: 7 mm
- terminal screw torque: 0,5 Nm (4,4 lb.in), for more information see page 20 and 21

CNE...RY 48 poles connector inserts
Maximum current load derating diagram



¹⁾ for unprepared conductors

