

CDA-CDC series

The compact inserts

CDA inserts with screw-type termination

The screw-type connector inserts CDA series with 10 and 16 poles + ⊕ are now made using screw-type terminals (CNE series) with a built-in wire protection pressure plate of proven reliability and practicality.

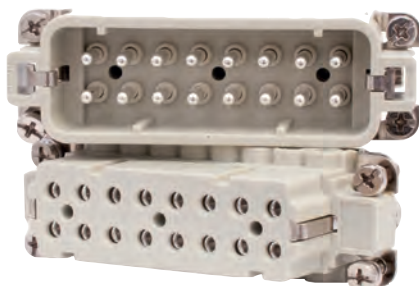
The wire protection pressure plate preserves the conductors in case of wiring with **unprepared conductors** (i.e. without wire end ferrules) up to a maximum wire cross-section of **4 mm²** (12 AWG).

The variant without a wire protection pressure plate (code with suffix X) is also available, for use with **prepared conductors** featuring a wire end ferrule with a maximum usable wire cross-section of **2,5 mm²** (14 AWG).



CDC inserts with crimp termination

The crimp termination CDC series of inserts with 10 and 16 poles + ⊕ now adopt the tried and tested contact retention technique of connector series CCE and CQE for removable crimp contacts (series CC, max 16A).



CDA-CDC INSERTS SUM-UP

- ☑ According to standard EN 61984:
16A 250V 4kV 3
16A 230/400V 4kV 2
- ☑ Insulation resistance: $\geq 10 \text{ G}\Omega$
- ☑ Ambient temperature limit: $-40 \text{ }^\circ\text{C} \dots +125 \text{ }^\circ\text{C}$
- ☑ Construction material: UL 94 V-0 self-extinguishing thermoplastic resin
- ☑ Mechanical life: ≥ 500 cycles
- ☑ Built-in silver plated contacts (only CDA series)

The applications

Like those of the previous series, CDA and CDC inserts and their enclosures are used in accordance with the recommendations EUROMAP 12, EUROMAP 13, EUROMAP 14-1, EUROMAP 16 and EUROMAP 62 (European industry consortium for moulding machines and plastic processing).

The CDC inserts can also be used with CC series crimp contacts made of iron/constantan (Fe-CuNi) for the cabling of J type thermocouples in accordance with IEC/EN 60584-1 (EUROMAP 14-1 recommendation).

The CDA/CDC series inserts can also be coupled with previous insert versions.



CSAH-SQUICH® series

Connection without tools, slim version

CSAH-SQUICH® inserts

To improve high performance industrial connections, ILME has developed and evolved its own spring clamp connectors to meet the market needs and make installation simpler.

The SQUICH® inserts are adaptable to any type of solid or flexible conductor, including unprepared conductors

Each of the spring terminals has an actuator button, suitably shaped and incorporated in the cavity. When this button is pressed, it triggers the closure of the spring device of the corresponding terminal, safely and reliably connecting the conductor to its respective electric contact in the connector.

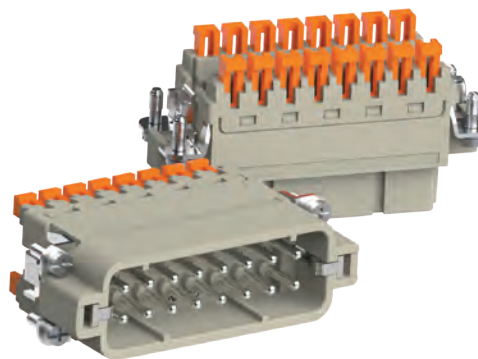
The actuator buttons are supplied raised, in the "open terminal" position and are easily distinguishable by the **orange colour which makes them stand out from the insulating body of the connector.**

The advantage of such an **exclusive solution** is that the **actuators disappear completely within the body of the connector**, making it easy to identify terminals not yet closed and eliminating possible obstacles to the movement of the conductors during installation and maintenance. In this manner during the cabling phase the **need for a tool to activate the terminal is completely eliminated and a simple operation is all you need to make the connection.**

Shaped button for measuring instruments

The profile of the button used in the **SQUICH®** series inserts **allow a measuring probe to be inserted.**

This allows checks to be carried out to ensure that the wiring is correct.



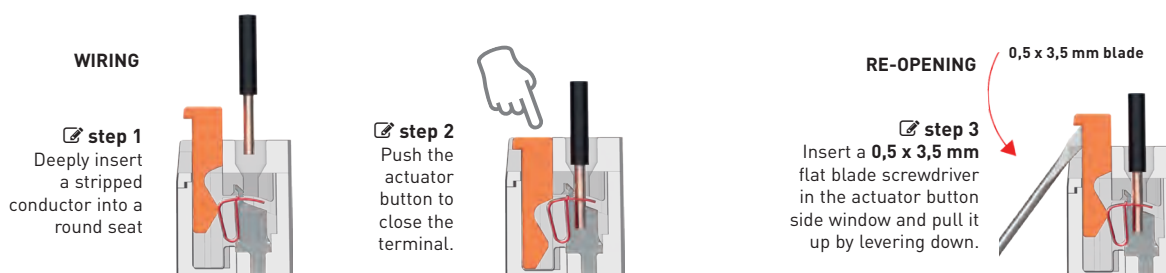
CSAH-SQUICH® INSERTS SUM-UP

- ☑ **Reduced space**
- ☑ **Reduced wiring time**
- ☑ **No need for tools**
- ☑ **Quick identification of wired and non-wired terminals**
- ☑ **Terminals already open and ready for conductor clamping**
- ☑ **Built-in silver plated contacts**
- ☑ **Excellent fastening solution**
- ☑ **Great resistance to strong vibration**

Simple terminal reopening

To reopen the terminals, simply introduce the tip of a common 0,5 x 3,5 mm flat blade screwdriver in the shaped pocket on the head of the actuator, and slightly rotate the screwdriver downwards: this will lift the actuator into its open terminal position.

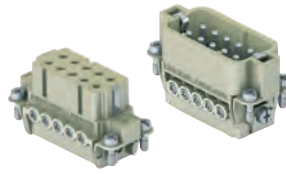
☑ SQUICH® Connection technology



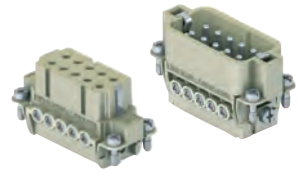
CDA 10 poles + ⊕ 16A - 250V

enclosures: size "49.16"	page:
IL-BRID	374 - 377, 382
CZ7 IP67, single lever	384
W-TYPE for aggressive environments	519
E-Xtreme® corrosion proof	540
EMC	576
panel supports: COB + adaptor	page: 652 - 654

inserts, screw terminal connection



inserts, screw terminal connection



description	part No.	part No.
-------------	----------	----------

indirect, with pressure plate ¹⁾
female inserts with female contacts
male inserts with male contacts

CDAF 10
CDAM 10

direct, without pressure plate ²⁾
female inserts with female contacts
male inserts with male contacts

CDAF 10 X
CDAM 10 X

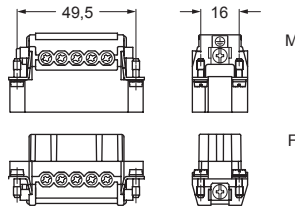
- characteristics according to EN 61984:

16A 250V 4kV 3
16A 230/400V 4kV 2

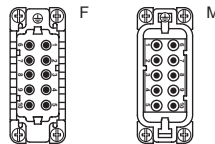
- cULus (UL for USA and Canada),

ERC certified

- rated voltage according to UL/CSA: 600V
- insulation resistance: ≥ 10 GΩ
- ambient temperature limit: -40 °C ... +125 °C
- made of self-extinguishing thermoplastic resin UL 94V-0
- mechanical life: ≥ 500 cycles
- contact resistance: ≤ 1 mΩ
- according to recommendations EUROMAP N° 16
- for max. current load see the connector inserts derating diagram below; for more information see page 28

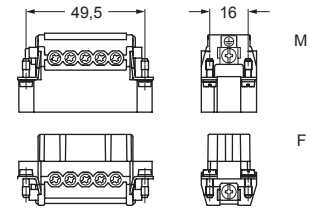


contacts side (front view)

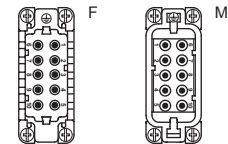


- inserts with pressure plate for conductors cross-sections:
0,5 - 4 mm² - AWG 20 - 12
- conductors stripping length: 7 mm
- terminal screw torque: 0,5 Nm (4.4 lb.in), for more information see page 20 and 21

¹⁾ for unprepared conductors



contacts side (front view)

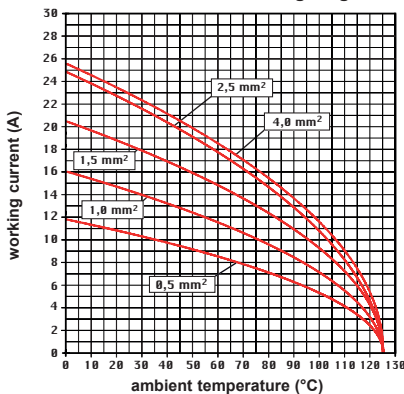


- inserts without pressure plate for prepared conductors with cross-sections:
0,25 - 2,5 mm² - AWG 24 - 14
- terminal screw torque: 0,5 Nm (4.4 lb.in), for more information see page 20 and 21

²⁾ for conductors with end sleeve ferrule



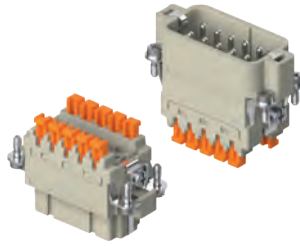
CDA 10 poles connector inserts
Maximum current load derating diagram



CSAH-SQUICH® 10 poles + ⊕ 16A - 250V

enclosures: size "49.16"	page:
IL-BRID	374 - 377, 382
CZ7 IP67, single lever	384
W-TYPE for aggressive environments	519
E-Xtreme® corrosion proof	540
EMC	576
panel supports: COB + adaptor	page: 652 - 654

inserts, spring terminal connections without tools

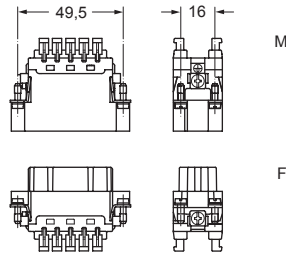


description	part No.
-------------	----------

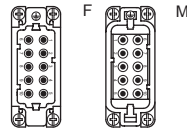
spring terminals with actuator button
 female inserts with female contacts
 male inserts with male contacts

CSAHF 10
CSAHM 10

- characteristics according to EN 61984:
16A 250V 4kV 3
16A 400V 4kV 2
- certified
- rated voltage according to UL/CSA: 600V
- insulation resistance: $\geq 10 \text{ G}\Omega$
- ambient temperature limit: $-40 \text{ }^\circ\text{C} \dots +125 \text{ }^\circ\text{C}$
- made of self-extinguishing thermoplastic resin UL 94V-0
- mechanical life: ≥ 500 cycles
- contact resistance: $\leq 3 \text{ m}\Omega$
- for max. current load see the connector inserts derating diagram below; for more information see page 28



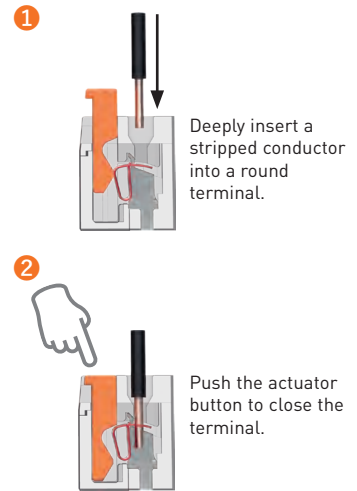
contacts side (front view)



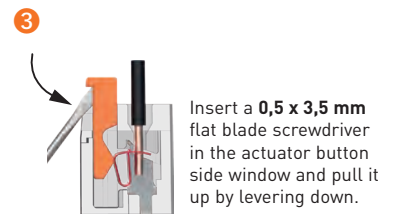
- inserts for conductors with the following sections:
 0,14 - 2,5 mm² - AWG 26 - 14
- for wires with crimped ferrule, usable section:
 up to 1,5 mm² (AWG 16)
- conductors stripping length: 9...11 mm

SQUICH®-spring connection technology

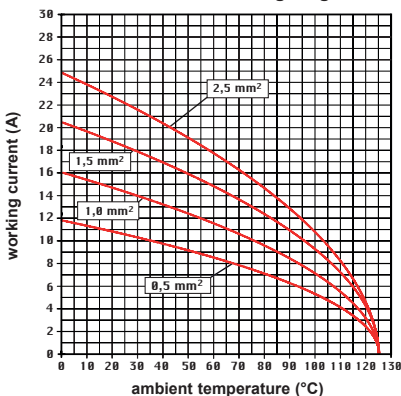
WIRING



RE-OPENING



CSAH 10 poles connector inserts
 Maximum current load derating diagram

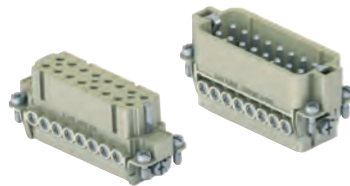


CDA 16 poles + ⊕ 16A - 250V

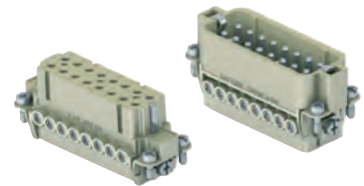
enclosures: size "66.16"	page:
IL-BRID	378 - 382
CZ7 IP67, single lever	385
W-TYPE for aggressive environments	520
E-Xtreme® corrosion proof	541
EMC	577

panel supports:	page:
COB + adaptor	652 - 654

inserts, screw terminal connection



inserts, screw terminal connection



description

part No.

part No.

indirect, with pressure plate ¹⁾
female inserts with female contacts
male inserts with male contacts


CDAF 16
CDAM 16

direct, without pressure plate ²⁾
female inserts with female contacts
male inserts with male contacts

CDAF 16 X
CDAM 16 X

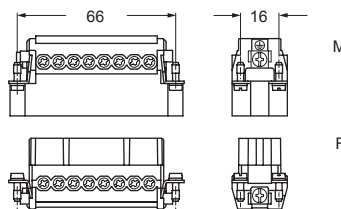
- characteristics according to EN 61984:

16A 250V 4kV 3
16A 230/400V 4kV 2

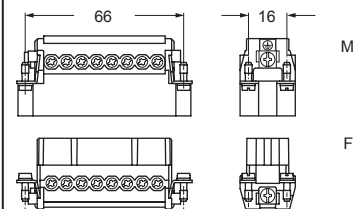
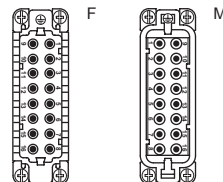
- cULus (UL for USA and Canada),   

  certified

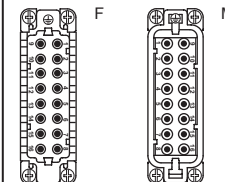
- rated voltage according to UL/CSA: 600V
- insulation resistance: ≥ 10 GΩ
- ambient temperature limit: -40 °C ... +125 °C
- made of self-extinguishing thermoplastic resin UL 94V-0
- mechanical life: ≥ 500 cycles
- contact resistance: ≤ 1 mΩ
- according to recommendations EUROMAP N° 13 / N° 14.1
- for max. current load see the connector inserts derating diagram below; for more information see page 28



contacts side (front view)



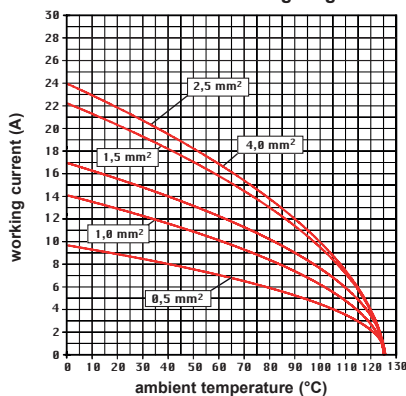
contacts side (front view)



- inserts with pressure plate for conductors cross-sections:
0,5 - 4 mm² - AWG 20 - 12
- conductors stripping length: 7 mm
- terminal screw torque: 0,5 Nm (4.4 lb.in), for more information see page 20 and 21

- inserts without pressure plate for prepared conductors with cross-sections:
0,25 - 2,5 mm² - AWG 24 - 14
- terminal screw torque: 0,5 Nm (4.4 lb.in), for more information see page 20 and 21

CDA 16 poles connector inserts
Maximum current load derating diagram



¹⁾ for unprepared conductors



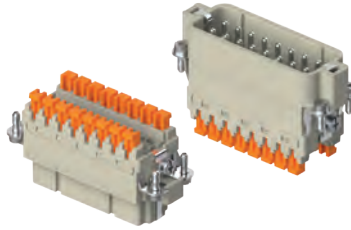
²⁾ for conductors with end sleeve ferrule



CSAH-SQUICH® 16 poles + ⊕ 16A - 250V

enclosures: size "66.16"	page:
IL-BRID	378 - 382
CZ7 IP67, single lever	385
W-TYPE for aggressive environments	520
E-Xtreme® corrosion proof	541
EMC	577
panel supports: COB + adaptor	page: 652 - 654

inserts, spring terminal connections without tools

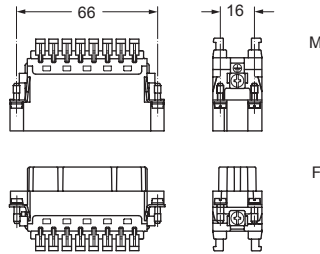


description	part No.
-------------	----------

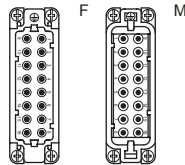
spring terminals with actuator button
female inserts with female contacts
male inserts with male contacts

CSAHF 16
CSAHM 16

- characteristics according to EN 61984:
16A 250V 4kV 3
16A 400V 4kV 2
- certified
- rated voltage according to UL/CSA: 600V
- insulation resistance: $\geq 10 \text{ G}\Omega$
- ambient temperature limit: $-40 \text{ }^\circ\text{C} \dots +125 \text{ }^\circ\text{C}$
- made of self-extinguishing thermoplastic resin UL 94V-0
- mechanical life: ≥ 500 cycles
- contact resistance: $\leq 3 \text{ m}\Omega$
- for max. current load see the connector inserts derating diagram below; for more information see page 28

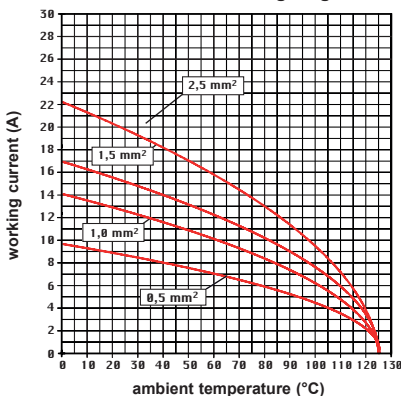


contacts side (front view)



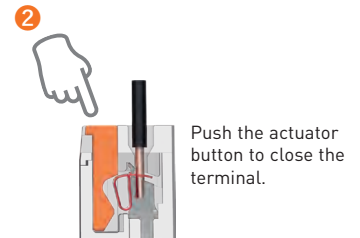
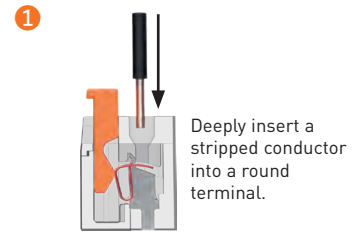
- inserts for conductors with the following sections:
0,14 - 2,5 mm² - AWG 26 - 14
- for wires with crimped ferrule, usable section:
up to 1,5 mm² (AWG 16)
- conductors stripping length: 9...11 mm

CSAH 16 poles connector inserts
Maximum current load derating diagram

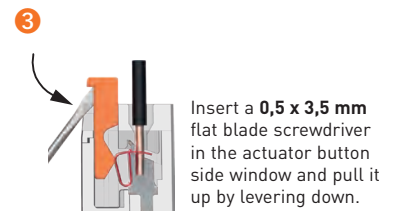


SQUICH®-spring connection technology

WIRING



RE-OPENING



CDA 32 poles + ⊕ 16A - 250V

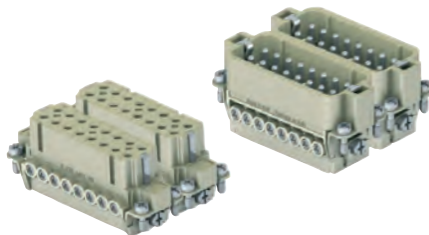
enclosures:
size "66.40"

page:

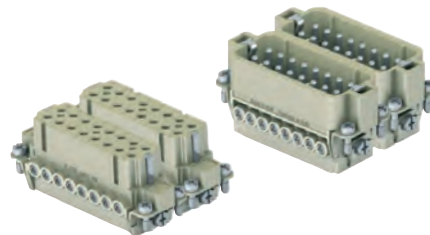
C-TYPE IP65 or IP66/IP69
W-TYPE for aggressive environments
E-Extreme® corrosion proof

431 - 434
527
548

inserts,
screw terminal connection



inserts,
screw terminal connection



description

part No.

part No.

part No.

part No.

indirect, with pressure plate ¹⁾
female inserts, No. (1-16) and (17-32)
male inserts, No. (1-16) and (17-32)

CDAF 16
CDAM 16

CDAF 16 N
CDAM 16 N

direct, without pressure plate ²⁾
female inserts, No. (1-16) and (17-32)
male inserts, No. (1-16) and (17-32)

CDAF 16 X
CDAM 16 X

CDAF 16 XN
CDAM 16 XN

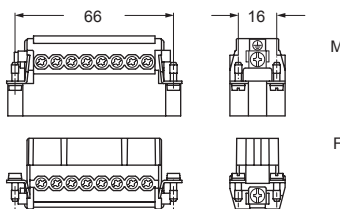
- characteristics according to EN 61984:

16A 250V 4kV 3
16A 230/400V 4kV 2

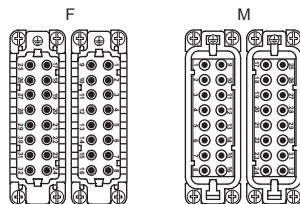
- us (UL for USA and Canada),

certified

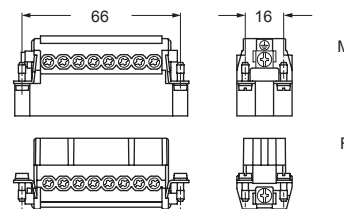
- rated voltage according to UL/CSA: 600V
- insulation resistance: $\geq 10 \text{ G}\Omega$
- ambient temperature limit: $-40 \text{ }^\circ\text{C} \dots +125 \text{ }^\circ\text{C}$
- made of self-extinguishing thermoplastic resin UL 94V-0
- mechanical life: ≥ 500 cycles
- contact resistance: $\leq 1 \text{ m}\Omega$
- according to recommendations EUROMAP N° 12 / N° 62
- for max. current load see the connector inserts derating diagram below; for more information see page 28



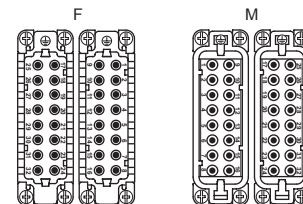
contacts side (front view)



- inserts with pressure plate for conductors cross-sections: 0,5 - 4 mm² - AWG 20 - 12
- conductors stripping length: 7 mm
- terminal screw torque: 0,5 Nm (4.4 lb.in), for more information see page 20 and 21

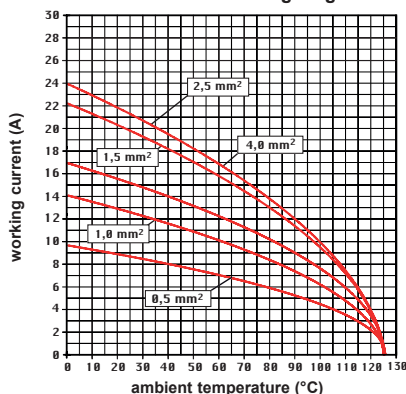


contacts side (front view)



- inserts without pressure plate for prepared conductors with cross-sections: 0,25 - 2,5 mm² - AWG 24 - 14
- terminal screw torque: 0,5 Nm (4.4 lb.in), for more information see page 20 and 21

CDA 32 poles connector inserts
Maximum current load derating diagram



¹⁾ for unprepared conductors



²⁾ for conductors with end sleeve ferrule



CSAH-SQUICH® 32 poles + ⊕ 16A - 250V

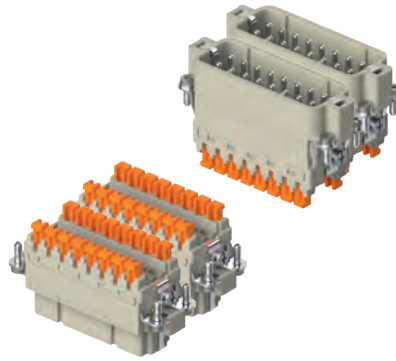
enclosures:
size "66.40"

page:

C-TYPE IP65 or IP66/IP69
W-TYPE for aggressive environments
E-Xtreme® corrosion proof

431 - 434
527
548

inserts, spring terminal connections without tools



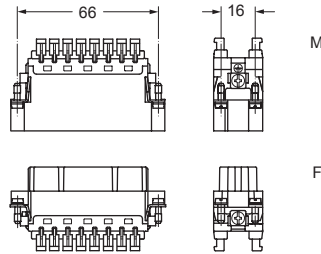
description	part No.	part No.
-------------	----------	----------

spring terminals with actuator button
female inserts, No. (1-16) and (17-32)
male inserts, No. (1-16) and (17-32)

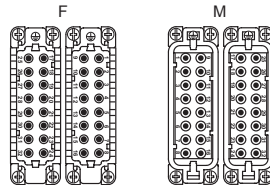
CSAHF 16
CSAHM 16

CSAHF 16 N
CSAHM 16 N

- characteristics according to EN 61984:
16A 250V 4kV 3
16A 400V 4kV 2
- certified
- rated voltage according to UL/CSA: 600V
- insulation resistance: $\geq 10 \text{ G}\Omega$
- ambient temperature limit: $-40 \text{ }^\circ\text{C} \dots +125 \text{ }^\circ\text{C}$
- made of self-extinguishing thermoplastic resin UL 94V-0
- mechanical life: ≥ 500 cycles
- contact resistance: $\leq 3 \text{ m}\Omega$
- for max. current load see the connector inserts derating diagram below; for more information see page 28



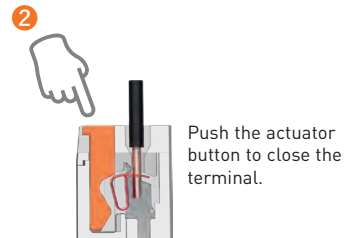
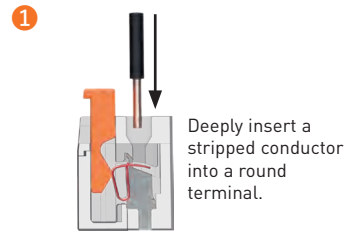
contacts side (front view)



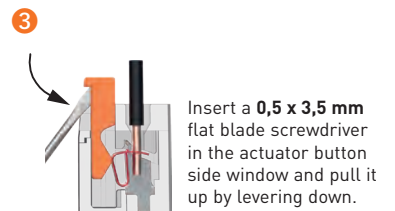
- inserts for conductors with the following sections:
0,14 - 2,5 mm² - AWG 26 - 14
- for wires with crimped ferrule, usable section:
up to 1,5 mm² (AWG 16)
- conductors stripping length: 9...11 mm

SQUICH®-spring connection technology

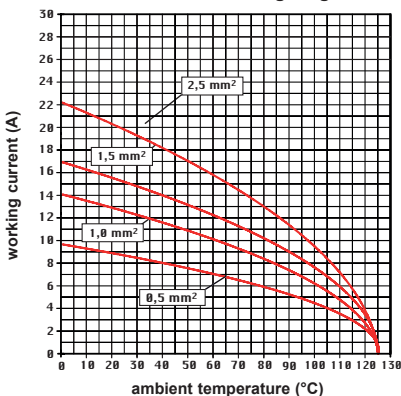
WIRING



RE-OPENING



CSAH 32 poles connector inserts
Maximum current load derating diagram

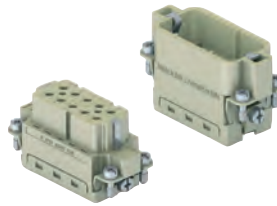


CDC 10 poles + ⊕ 16A - 250V

enclosures: size "49.16"	page:
IL-BRID	374 - 377, 382
CZ7 IP67, single lever	384
W-TYPE for aggressive environments	519
E-Xtreme® corrosion proof	540
EMC	576

panel supports: COB + adaptor	page: 652 - 654
----------------------------------	--------------------

inserts, crimp connections



16A crimp contacts standard or for advanced opening silver and gold plated



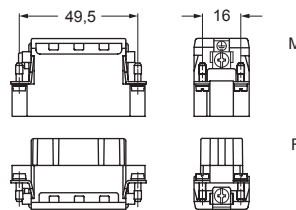
STANDARD



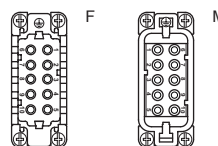
ADVANCED OPENING

description	part No.	part No.	part No.
without contacts (to be ordered separately)			
female inserts for female contacts	CDCF 10		
male inserts for male contacts	CDCM 10		
16A female contacts			
0,14-0,37 mm ² AWG 26-22 one groove		CCFA 0.3	CCFD 0.3
0,5 mm ² AWG 20 with no grooves		CCFA 0.5	CCFD 0.5
0,75 mm ² AWG 18 one groove (back side)		CCFA 0.7	CCFD 0.7
1 mm ² AWG 18 one groove		CCFA 1.0	CCFD 1.0
1,5 mm ² AWG 16 two grooves		CCFA 1.5	CCFD 1.5
2,5 mm ² AWG 14 three grooves		CCFA 2.5	CCFD 2.5
3 mm ² AWG 12 one wide groove		CCFA 3.0	CCFD 3.0
4 mm ² AWG 12 with no grooves		CCFA 4.0	CCFD 4.0
16A male contacts			
0,14-0,37 mm ² AWG 26-22 one groove		CCMA 0.3	CCMD 0.3
0,5 mm ² AWG 20 with no grooves		CCMA 0.5	CCMD 0.5
0,75 mm ² AWG 18 one groove (back side)		CCMA 0.7	CCMD 0.7
1 mm ² AWG 18 one groove		CCMA 1.0	CCMD 1.0
1,5 mm ² AWG 16 two grooves		CCMA 1.5	CCMD 1.5
2,5 mm ² AWG 14 three grooves		CCMA 2.5	CCMD 2.5
3 mm ² AWG 12 one wide groove		CCMA 3.0	CCMD 3.0
4 mm ² AWG 12 with no grooves		CCMA 4.0	CCMD 4.0
16A male crimp contacts for advanced opening			
0,5 mm ² AWG 20 with no grooves		CC 0.5 AN	* for basic or high thickness gold plating, please refer to page 675
0,75 mm ² AWG 18 one groove (back side)		CC 0.7 AN	
1 mm ² AWG 18 one groove		CC 1.0 AN	
1,5 mm ² AWG 16 two grooves		CC 1.5 AN	
2,5 mm ² AWG 14 three grooves		CC 2.5 AN	

- characteristics according to EN 61984:
16A 250V 4kV 3
16A 230/400V 4kV 2
- cULus (UL for USA and Canada),
- certified
- rated voltage according to UL/CSA: 600V
- insulation resistance: ≥ 10 GΩ
- ambient temperature limit: -40 °C ... +125 °C
- made of self-extinguishing thermoplastic resin UL 94V-0
- mechanical life: ≥ 500 cycles
- contact resistance: ≤ 1 mΩ
- according to recommendations EUROMAP N° 16
- for max. current load see the connector inserts derating diagram below; for more information see page 28

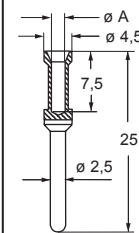


contacts side (front view)

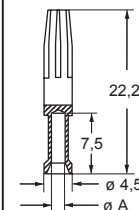
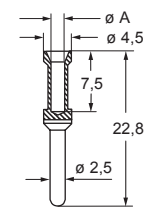


- it is recommended to crimp the contacts with crimping tools homologated by ILME (please see the crimping tool section 16A contacts, CCF, CCM and CC...AN series on pages 708 - 741)

CCF and CCM



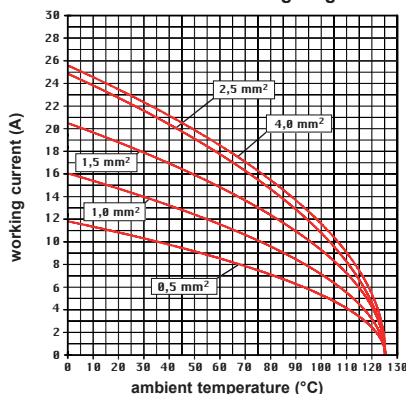
CC...AN



CCF, CCM and CC...AN contacts

conductor section mm ²	conductor slot ø A (mm)	conductors stripping length (mm)
0,14-0,37	0,9	7,5
0,5	1,1	7,5
0,75	1,3	7,5
1,0	1,45	7,5
1,5	1,8	7,5
2,5	2,2	7,5
3	2,55	7,5
4	2,85	7,5

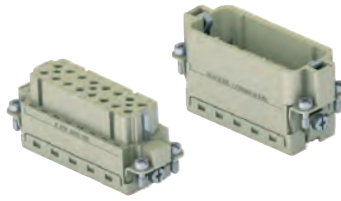
CDC 10 poles connector inserts
Maximum current load derating diagram



CDC 16 poles + ⊕ 16A - 250V

enclosures: size "66.16"	page:
IL-BRID	378 - 382
CZ7 IP67, single lever	385
W-TYPE for aggressive environments	520
E-Xtreme® corrosion proof	541
EMC	577
panel supports: COB + adaptor	page: 652 - 654

inserts, crimp connections



16A crimp contacts standard or for advanced opening silver and gold plated



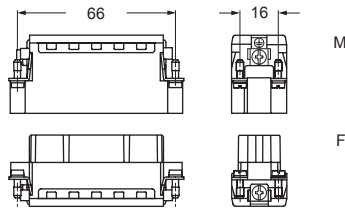
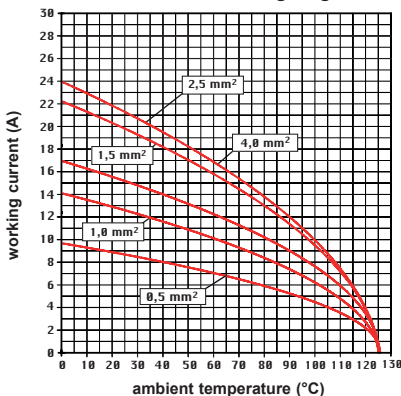
STANDARD

ADVANCED OPENING

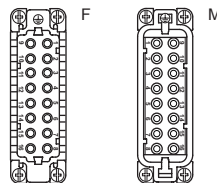
description	part No.	part No.	part No.
without contacts (to be ordered separately)			
female inserts for female contacts	CDCF 16		
male inserts for male contacts	CDCM 16		
16A female contacts			
0,14-0,37 mm ² AWG 26-22 one groove		CCFA 0.3	CCFD 0.3
0,5 mm ² AWG 20 with no grooves		CCFA 0.5	CCFD 0.5
0,75 mm ² AWG 18 one groove (back side)		CCFA 0.7	CCFD 0.7
1 mm ² AWG 18 one groove		CCFA 1.0	CCFD 1.0
1,5 mm ² AWG 16 two grooves		CCFA 1.5	CCFD 1.5
2,5 mm ² AWG 14 three grooves		CCFA 2.5	CCFD 2.5
3 mm ² AWG 12 one wide groove		CCFA 3.0	CCFD 3.0
4 mm ² AWG 12 with no grooves		CCFA 4.0	CCFD 4.0
16A male contacts			
0,14-0,37 mm ² AWG 26-22 one groove		CCMA 0.3	CCMD 0.3
0,5 mm ² AWG 20 with no grooves		CCMA 0.5	CCMD 0.5
0,75 mm ² AWG 18 one groove (back side)		CCMA 0.7	CCMD 0.7
1 mm ² AWG 18 one groove		CCMA 1.0	CCMD 1.0
1,5 mm ² AWG 16 two grooves		CCMA 1.5	CCMD 1.5
2,5 mm ² AWG 14 three grooves		CCMA 2.5	CCMD 2.5
3 mm ² AWG 12 one wide groove		CCMA 3.0	CCMD 3.0
4 mm ² AWG 12 with no grooves		CCMA 4.0	CCMD 4.0
16A male crimp contacts for advanced opening			
0,5 mm ² AWG 20 with no grooves		CC 0.5 AN	* for basic or high thickness gold plating, please refer to page 675
0,75 mm ² AWG 18 one groove (back side)		CC 0.7 AN	
1 mm ² AWG 18 one groove		CC 1.0 AN	
1,5 mm ² AWG 16 two grooves		CC 1.5 AN	
2,5 mm ² AWG 14 three grooves		CC 2.5 AN	

- characteristics according to EN 61984:
16A 250V 4kV 3
16A 230/400V 4kV 2
- (UL for USA and Canada),
-
- rated voltage according to UL/CSA: 600V
- insulation resistance: ≥ 10 GΩ
- ambient temperature limit: -40 °C ... +125 °C
- made of self-extinguishing thermoplastic resin UL 94V-0
- mechanical life: ≥ 500 cycles
- contact resistance: ≤ 1 mΩ
- according to recommendations EUROMAP N° 13 / N° 14.1
- for max. current load see the connector inserts derating diagram below; for more information see page 28

**CDC 16 poles connector inserts
Maximum current load derating diagram**

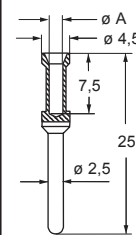


contacts side (front view)

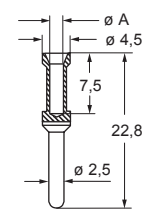


- it is recommended to crimp the contacts with crimping tools homologated by ILME (please see the crimping tool section 16A contacts, CCF, CCM and CC...AN series on pages 708 - 741)

CCF and CCM



CC...AN



CCF, CCM and CC...AN contacts

conductor section mm ²	conductor slot ø A (mm)	conductors stripping length (mm)
0,14-0,37	0,9	7,5
0,5	1,1	7,5
0,75	1,3	7,5
1,0	1,45	7,5
1,5	1,8	7,5
2,5	2,2	7,5
3	2,55	7,5
4	2,85	7,5

CDC 32 poles + ⊕ 16A - 250V

enclosures:
size "66.40"

page:

C-TYPE IP65 or IP66/IP69
W-TYPE for aggressive environments
E-Xtreme® corrosion proof

431 - 434
527
548

inserts, crimp connections



16A crimp contacts standard or for advanced opening silver and gold plated



STANDARD

ADVANCED OPENING

description	part No.	part No.	part No.	part No.
without contacts (to be ordered separately)				
female inserts, No. (1-16) and (17-32)	CDCF 16	CDCF 16 N		
male inserts, No. (1-16) and (17-32)	CDCM 16	CDCM 16 N		
16A female contacts				
0,14-0,37 mm ² AWG 26-22 one groove			CCFA 0.3	CCFD 0.3
0,5 mm ² AWG 20 with no grooves			CCFA 0.5	CCFD 0.5
0,75 mm ² AWG 18 one groove (back side)			CCFA 0.7	CCFD 0.7
1 mm ² AWG 18 one groove			CCFA 1.0	CCFD 1.0
1,5 mm ² AWG 16 two grooves			CCFA 1.5	CCFD 1.5
2,5 mm ² AWG 14 three grooves			CCFA 2.5	CCFD 2.5
3 mm ² AWG 12 one wide groove			CCFA 3.0	CCFD 3.0
4 mm ² AWG 12 with no grooves			CCFA 4.0	CCFD 4.0
16A male contacts				
0,14-0,37 mm ² AWG 26-22 one groove			CCMA 0.3	CCMD 0.3
0,5 mm ² AWG 20 with no grooves			CCMA 0.5	CCMD 0.5
0,75 mm ² AWG 18 one groove (back side)			CCMA 0.7	CCMD 0.7
1 mm ² AWG 18 one groove			CCMA 1.0	CCMD 1.0
1,5 mm ² AWG 16 two grooves			CCMA 1.5	CCMD 1.5
2,5 mm ² AWG 14 three grooves			CCMA 2.5	CCMD 2.5
3 mm ² AWG 12 one wide groove			CCMA 3.0	CCMD 3.0
4 mm ² AWG 12 with no grooves			CCMA 4.0	CCMD 4.0
16A male crimp contacts for advanced opening				
0,5 mm ² AWG 20 with no grooves			CC 0.5 AN	* for basic or high thickness gold plating, please refer to page 675
0,75 mm ² AWG 18 one groove (back side)			CC 0.7 AN	
1 mm ² AWG 18 one groove			CC 1.0 AN	
1,5 mm ² AWG 16 two grooves			CC 1.5 AN	
2,5 mm ² AWG 14 three grooves			CC 2.5 AN	

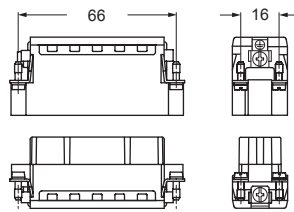
- characteristics according to EN 61984:

16A 250V 4kV 3
16A 230/400V 4kV 2

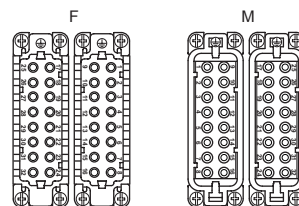
- cULus (UL for USA and Canada),

EUROPEAN VERITAS ERI certified

- rated voltage according to UL/CSA: 600V
- insulation resistance: ≥ 10 G Ω
- ambient temperature limit: -40 °C ... +125 °C
- made of self-extinguishing thermoplastic resin UL 94V-0
- mechanical life: ≥ 500 cycles
- contact resistance: ≤ 1 m Ω
- according to recommendations EUROMAP N° 12 / N° 62
- for max. current load see the connector inserts derating diagram below; for more information see page 28

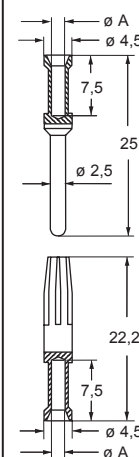


contacts side (front view)

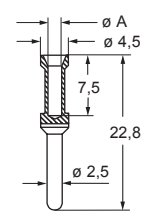


- it is recommended to crimp the contacts with crimping tools homologated by ILME (please see the crimping tool section 16A contacts, CCF, CCM and CC...AN series on pages 708 - 741)

CCF and CCM



CC...AN



CCF, CCM and CC...AN contacts

conductor section mm ²	conductor slot ø A (mm)	conductors stripping length (mm)
0,14-0,37	0,9	7,5
0,5	1,1	7,5
0,75	1,3	7,5
1,0	1,45	7,5
1,5	1,8	7,5
2,5	2,2	7,5
3	2,55	7,5
4	2,85	7,5

**CDC 32 poles connector inserts
Maximum current load derating diagram**

