

## Selection table for trip rails

**Trip rail series** (here only preferable series; for other series see catalog)

**UFA** Aluminum

**ULA** Aluminum, according to DIN 69638

**UL** Aluminum, can be expanded

**UF** Cast iron, according to DIN 69638

**Slot spacing [mm]**

8

12

16

**Number of slots (max.)**

3

4

6

8

Series				Slot spacing [mm]			Number of slots (max.)				Page
UFA	ULA	UL	UF	8	12	16	3	4	6	8	
•				•					•		C-30
	•				•				•		C-30
	•					•			•		C-30
		•			•		Can be expanded				C-30
			•	•						•	C-30
			•		•					•	C-30
			•			•				•	C-30

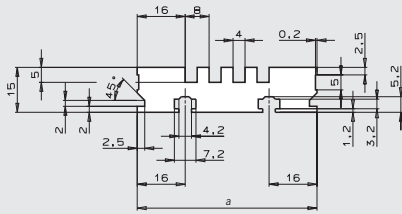
• Available

## Trip rails with 8 mm, 12 mm or 16 mm spacing



**Series UFA...**  
Slot spacing 8 mm, aluminum

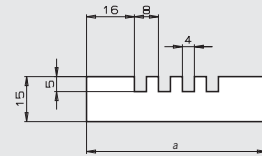
### Dimension drawing



Dimension a [mm]	44	52	60	68	76
Number of slots	2	3	4	5	6

Minimum order 2,010 mm, 1 bar

**Series UF...**  
Slot spacing 8 mm, cast iron



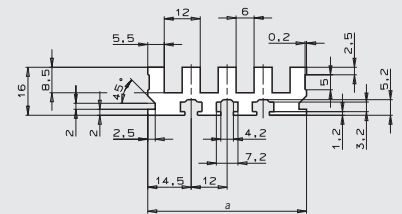
Dimension a [mm]	44	52	60	68	76	92
Number of slots	2	3	4	5	6	8
Dimension a [mm]	108	124	140	156	172	188
Number of slots	10	12	14	16	18	20

Length max. 1,000 mm  
Gray figures on request



**Series ULA...** according to DIN 69638 type A  
Slot spacing 12 mm, aluminum

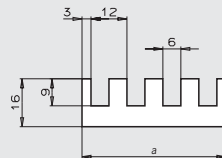
### Dimension drawing



Dimension a [mm]	29	41	53	65	77
Number of slots	2	3	4	5	6

Minimum order 2,010 mm, 1 bar

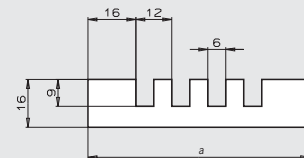
**Series UL...** can be placed in a row  
Slot spacing 12 mm, aluminum



Dimension a [mm]	24	36	48
Number of slots	2	3	4

Preferable lengths 1,000, 2,000, 3,000 and 4,000 mm (preferable length corresponds to minimum order)

**Series UF...** according to DIN 69638 type A  
Slot spacing 12 mm, cast iron



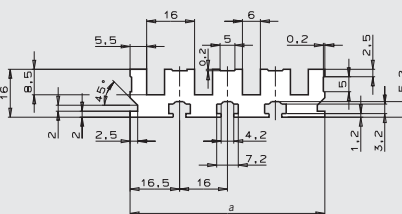
Dimension a [mm]	50	62	74	86	98	122
Number of slots	2	3	4	5	6	8
Dimension a [mm]	146	170	194	218		
Number of slots	10	12	14	16		

Length max. 1,000 mm  
Gray figures on request



**Series ULA...** according to DIN 69638 type A  
Slot spacing 16 mm, aluminum

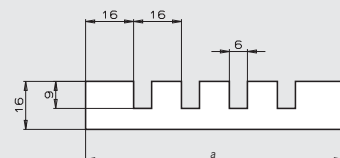
### Dimension drawing



Dimension a [mm]	33	49	65	97
Number of slots	2	3	4	6

Minimum order 2,010 mm, 1 bar

**Series UF...** according to DIN 69638 type A  
Slot spacing 16 mm, cast iron



Dimension a [mm]	54	70	86	102	118	150
Number of slots	2	3	4	5	6	8
Dimension a [mm]	182	214				
Number of slots	10	12				

Length max. 1,000 mm  
Gray figures on request

### Ordering code

U				-					
---	--	--	--	---	--	--	--	--	--

Series

Number of slots (see tables)

Slot spacing (8, 12 or 16 mm)

Length [mm] (note minimum order/preferable length)

## Trip dogs for trip rails with 8 mm, 12 mm or 16 mm spacing

### Type of actuation mechanical

### Type of actuation inductive

#### Series U8...

For 8 mm slot spacing, hardened, ground steel

#### Dimension drawing

Figure 1

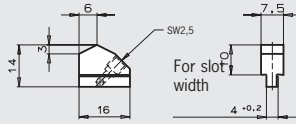


Figure 2

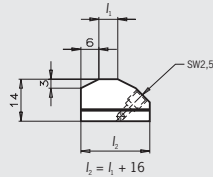
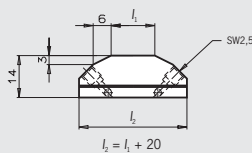


Figure 3



$l_1$	Figure
0	1
4	2
6.3	2
10	3
16	3
20	3
25	3
40	3
63	3
100	3

#### Series UX8...

For 8 mm slot spacing, black painted steel



Figure 1

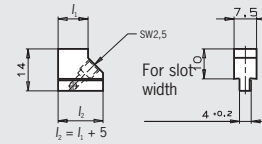
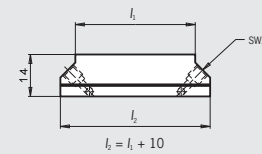


Figure 2



$l_1$	Figure
6	1
10	1
16	1
25	2
40	2
63	2
100	2

#### Series U1216... according to DIN 69639 type UA/UB

For 12 or 16 mm slot spacing, hardened, ground steel

#### Dimension drawing

Figure 1

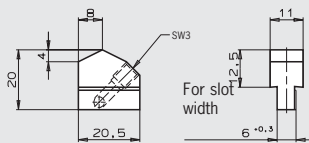


Figure 2

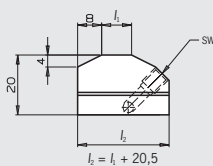
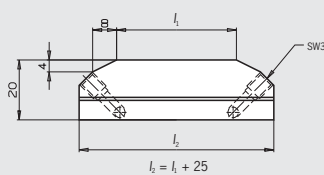


Figure 3



$l_1$	Figure	DIN/type
0	1	UA
4	2	UA
6.3	2	-
10	2	UA
16	3	UB
25	3	UB
40	3	UB
63	3	UB
100	3	UB
125	3	-

#### Series UX1216...

For 12 or 16 mm slot spacing, black painted steel

Figure 1

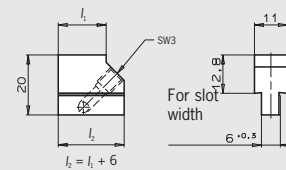
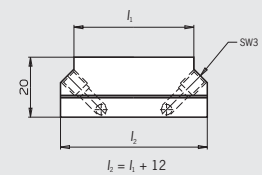


Figure 2



$l_1$	Figure
10	1
16	1
25	2
40	2
63	2
100	2
125	2



#### Ordering code

U      -

Series

Length  $l_1$

## Special trip dogs for trip rails with 12 mm or 16 mm spacing

### Type of actuation mechanical

- ▶ Safety dog
- ▶ Fine adjustment dogs

#### Safety dog UZ

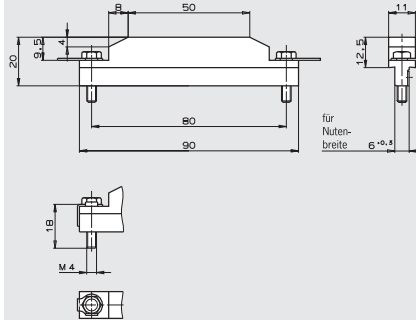
For limit switches with safety function the safety dog must be positively mounted

#### Fine adjustment dog UE

The fine adjustment dog UE1216-4 can be mounted in all U-trip rails with 12 or 16 mm slot spacing. The fine adjustment is made using a self-locking hexagon socket head screw

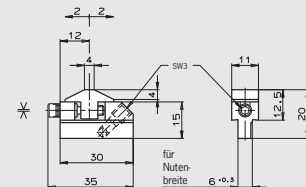
**Safety dog UZ** for 12/16 mm slot spacing, hardened, ground steel

#### Dimension drawing UZ1216-50



**Fine adjustment dog UE** for 12/16 mm slot spacing, hardened, ground steel

#### Dimension drawing UE1216-4



Adjustment range [mm]	4
Graduation > < [mm]	0.02

### Ordering table

Designation	Use	Order no./item
Safety dog UZ	For trip rails ULA/UL/UF 12 or 16 mm	<b>022734</b> UZ1216-50
Fine adjustment dog UE	For trip rails ULA/UL/UF 12 or 16 mm	<b>013340</b> UE1216-4